

**Health Care Needs Assessment of
Recently Incarcerated Women in
a Multnomah County Jail**

By

Alexandra Fickenscher

Presented to the Department of Public Health

and Preventive Medicine

Oregon Health Sciences University

In partial fulfillment of the requirements for the degree of

Master of Public Health

April 1999

School of Medicine
Oregon Health Sciences University

Certificate of Approval

This is to certify that the M.P.H. thesis of

Alexandra Fickenschner

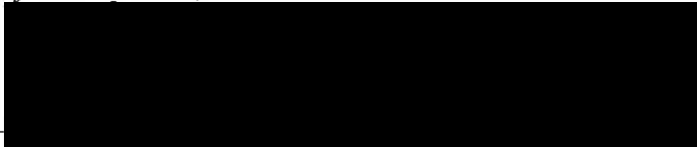
has been approved.



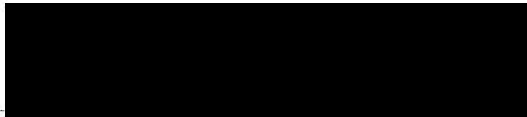
Thomas Becker, M.D., Ph.D. Committee Chair



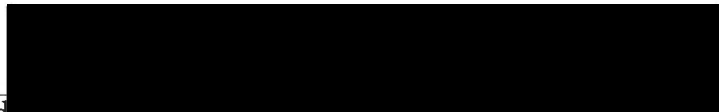
Jodi Lapidus, Ph.D.



Patricia Silk-Walker, R.N., Ph.D.



Heidi Nelson, M.D., M.P.H.



Richard Mauer, Associate Dean for Graduate Studies

Table of Contents

	<u>Page</u>
Acknowledgements	iii
Abstract	iv
Introduction	1
Methods	9
Results	21
Discussion	30
Limitations	35
Conclusions	37
References	38
Appendix 1. Questionnaire, BRFSS, IES, TLE	not numbered
Appendix 2. Data Tables	not numbered

Tables and Figures

Table 1. Demographic Characteristics by Racial and Ethnic Categories of Study Subjects: Multnomah County Jail Health Study, 1999	23
Table 2. Predictors of High Health Care Needs of Study Subjects: Multnomah County Jail Health Study, 1999	29
Table 3. Predictors of High Health Care Needs of Study Subjects: Multnomah County Jail Health Study, 1999	29

Figure 1. Process of Inmate Selection: Multnomah County Jail Health Study, 1999	12
Figure 2. Health Care Coverage Among Inmates: Multnomah County Jail Health Study	24
Figure 3. Reason for Current Arrest: Multnomah County Jail Health Study, 1999	24
Figure 4. History of Previous Incarcerations of Inmates: Multnomah County Jail Health Study, 1999	25
Figure 5. Number of Sex Partners in Past Year Among Inmates: Multnomah County Jail Health Study, 1999	26
Figure 6. Use of Drug in Month Prior to Arrest Given Ever Use of Drug: Multnomah County Jail Health Study, 1999	27

Acknowledgements

I would like to thank my advisor, Tom Becker, for his perseverance and seemingly limitless patience. I would also like to thank members of my committee, Jodi Lapidus, Pat Silk-Walker and Heidi Nelson, for their suggestions and guidance throughout this process.

I would like to express my appreciation to Multnomah County Jail's Correctional Health staff and Corrections officers. Gayle Burrow, Sergeant Lamb, Larry Riley and Bethany Wurtz provided me with much needed information regarding both the history and statistics of Inverness Jail and Multnomah County Corrections. Phyllis Martin arrived at an auspicious moment and relieved me of a great deal of interviewing, for which I am very thankful.

Finally, I would like to acknowledge those who made this research possible – the many women I interviewed at Multnomah County Jail. These inmates were willing to disrupt their daily schedule, wait for long periods of time and sit through a half hour interview. I feel such behavior indicates two things: altruism and an interest in having the opportunity to talk to someone regarding personal health. Aware that participation in this study serves to improve knowledge regarding the health needs of female inmates and that subsequent changes will assist future inmates only, most women still agreed to participate. Secondly, many inmates showed an interest in the opportunity to answer questions regarding their health, their lifestyles, their families and their health behaviors. Perhaps these women, while on the outside, are presented more often with opportunities where they must listen as opposed to being able to talk. In the process of learning about the varied experiences and personalities of these women, I learned quite a bit about myself.

Abstract

In the past fifteen years, the number of female jail inmates in the United States has tripled. As the number of inmates increases, so too do resources for administration, housing and medical care. Health care needs of female inmates often relate to their involvement in high risk behavior. Such behavior includes illicit drug use, use of intravenous drugs, trading sex for money or drugs and a high number of sexual partners. Female inmates also frequently report lack of health care coverage, infrequent use of health care, histories of physical and sexual abuse and histories of homelessness. Female inmates provide a section of the population with potentially great health care needs that have been traditionally marginalized and overlooked.

We collected self-reported data regarding demographic characteristics, history of health care use, health care coverage and health behaviors, including smoking, illicit drug use and number of sexual partners. One hundred seventy (85.9%) participants reported a history of physical or sexual abuse. Of the participants reporting ever use of the drug, 101 (50.8%) participants reporting using alcohol, 54 (27.1%) participants reported using crack, 50 (25.1%) participants reported using amphetamines, 41 (20.6%) participants reported using heroin and 41 (20.6%) participants reported using cocaine during the month prior to incarceration. Fifty nine (29.6%) participants reported being homeless during the month prior to incarceration. One hundred seventy four (87.4%) participants were recidivists.

We modeled variables associated with high health care needs. We classified an inmate as having high health care needs if she had one of the following four criteria: self-rated health as fair or poor, rated physical health as poor for more than half of the month prior to arrest, rated mental health as poor for more than half of the month prior to arrest or had the last visit to a doctor in five or more years. The three variables associated with the dependent variable, high health care needs, included history of physical assault (OR = 2.3, 95% C.I. = 1.2, 4.6), homelessness during month prior to arrest (OR = 2.2, 95% C.I. = 1.1, 4.5) and use of heroin during month prior to arrest (OR = 3.1, 95% C.I. = 1.2, 7.5). Results from this study can be used to implement new correctional health policy regarding the inmate health screen and topics covered during such a screen. Corrections health could play an important role in addressing the health care needs of this rapidly growing section of incarcerated persons.

Introduction

Among incarcerated persons in the United States, women constitute the fastest growing segment (Safyer et al, 1995). In 1998, women comprised 10.8% of the nation's jail population, up from 8.0% in 1985 (US Department of Justice, 1999). The Average Daily Population (ADP)* of female jail inmates in 1998 was 63,791, a greater than threefold increase from 19,077 female inmates in 1985 (US Department of Justice, 1999). As the number of female inmates increases at such a fast rate, resources for administration, housing and medical care become increasingly limited. In addition, correctional policy makers are realizing the numerous differences between male and female inmates and their respective backgrounds and needs (Veysey et al, 1998). Despite the growing number of female inmates, little documentation exists on the health care status, health care needs and personal histories of these women.

Incarcerated women share a common background of low socioeconomic status, low levels of education, histories of physical and/or sexual abuse, mental health needs, substance abuse, young age, and minority status. Incarcerated women report limited access to health care prior to incarceration, a history of homelessness and participation in high-risk behavior such as unprotected intercourse, trading sex for money or drugs, intravenous drug use (IDU) and sharing needles during intravenous drug use (El-Bassell et al, 1995). Addressing and providing health care needs to incarcerated women would result in treating a high-risk and underserved population.

* Average Daily Population is the sum of the numbers of inmates in a jail each day for a year, divided by the total number of days in the year (US Department of Justice, 1999).

In the current political climate, incarceration is viewed as a means of punishment as opposed to rehabilitation. However, providing medical care to ‘offenders of the community’ serves an important public health intervention. Improving the health status of incarcerated women would benefit the community into which they are eventually released. By treating incarcerated women, rates of infectious and sexually transmitted diseases could be lowered in the community. Women with mental health needs could have the opportunity to meet with a counselor and psychiatrist to discuss treatment with therapy and possible use of psychotropic medications. Women with a history of substance abuse could begin drug and alcohol treatment while incarcerated. After release, these women could be connected with the local network of drug and alcohol treatment centers. While the general population may have disinterested attitudes towards incarcerated women, treating their health care needs would benefit not only those women, but the families and communities of which they are members.

A review of the literature reveals several characteristics common to many incarcerated women and the effect of such characteristics on health. These include low socioeconomic status, a history of physical and/or sexual abuse, mental health needs, substance abuse, high risk behaviors and maternity. Each of these characteristics is considered below:

Socioeconomic Status (SES)

In 1996, approximately 11.7 percent of Oregon residents lived at or below the poverty level (U.S. Bureau of the Census, 1998). Published data specifically addressing the proportion of women living at or below the poverty level do not exist in Oregon.

However, data do exist on the proportion of people in poverty who are in households headed by females. In 1990, 35% percent of those living at poverty level were in households headed by women. Sixty five (65) percent of those living at poverty level were families with at least one child under the age of five (Center for Population Research and Census, 1997). No data are currently available on the SES of incarcerated women in Multnomah County jails.

Members of low SES groups tend to have poorer health status compared to members of higher SES groups (Health, United States, 1998). While many complex reasons account for this, social class is among the strongest known predictors of illness and health.

Research documents an increase in smoking prevalence, a decrease in physical activity, an increased consumption of high-fat diets, and decreased knowledge about health with decreasing SES (Health, United States, 1998). This results in higher morbidity and mortality among those of lower SES. Poorer health status among people of low SES can also be attributed to decreased access to health care insurance and appropriate health care services associated with health care coverage. As a result of numerous contributing factors, members of lower SES groups tend to have poorer health outcomes and a poorer health status when compared to members of higher SES groups.

Physical and Sexual Abuse

Current national statistics on the prevalence of a history of physical and/or sexual abuse among incarcerated women range from 50% (US Department of Justice, 1998) to over 80% (Veysey et al, 1998). A cross-sectional study of women at Riker's Island Jail in

New York City compared the prevalence of high risk behaviors among inmates with a history of abuse to those without a history of abuse (Richie et al, 1996). Those with a history of abuse were more likely to have exchanged sex for money, injected drugs, attempted suicide and been homeless compared to women without a history of physical and/or sexual abuse. To date, no established studies have been conducted in Oregon that focus on the prevalence of a history of physical and/or sexual abuse among incarcerated women.

Mental Health Needs

Incarcerated women have significant mental health needs – one third to two thirds of women newly admitted to jails suffer sufficient psychological distress to require mental health services (Singer et al, 1995). The range of mental health needs varies, although for incarcerated mothers, concern over separation from dependent children ranks among the highest reasons for anxiety and depression (Fogel, 1993). Anxiety over separation from family is a common concern, considering that three-quarters of incarcerated women are single mothers.

Fogel (Fogel, 1993) focused on the relation between stress of incarceration and health status in a follow-up study of newly incarcerated women in the North Carolina Correctional Center for Women in 1988. Results indicated that after six months of incarceration, women had high levels of depression, with 67% experiencing depressive symptoms indicative of clinical depression (Fogel, 1993). Teplin reported that women in jail have a prevalence of depression four times higher than for men (Teplin et al, 1997).

Teplin also reported that less than one quarter of female jail detainees who had severe mental disorders and needed services received them while they were in jail.

Female inmates also have increased mental health needs as a result of the relatively high proportion who experienced physical and/or sexual abuse. Compared to inmates who have not experienced abuse, women who experienced some type of traumatic life experience, including physical and sexual abuse are likely to have Posttraumatic Stress Disorder (PTSD). Zlotnick found a high proportion of incarcerated women with PTSD with increased likelihoods of depression and substance use when compared to incarcerated women without PTSD (Zlotnick, 1997). A history of traumatic life experiences plays an important role in the subsequent mental health needs and use of drugs and alcohol. PTSD, mental health needs and substance abuse are strongly correlated in this population.

Substance Abuse

In 1994, approximately 70% of arrestees in 23 major cities across the U.S. tested positive for drug use (National Commission on Correctional Health Care, 1992). Specifically, 46% of women incarcerated in 1990 had been using alcohol and other drugs or both at the time their offense was committed (Berkowitz et al, 1996). In Portland, Oregon, in 1997, random urine samples were tested from male and female jail inmates (US Department of Justice, 1998). More than three-quarters of female arrestees tested positive for any drug. The two drugs for which women tested positive most frequently were cocaine/crack (45.1%) and opiates (26.7%).

Use of cocaine and heroin are associated with high risk behavior. Incarcerated crack-using women have been shown to be three times more likely to have committed their current offense to obtain money for drugs, and more likely to have had a previous criminal history when compared with non crack-using incarcerated women (El-Bassell et al, 1996). Among heroin users, injection is a common method of self-administering the drug. Intravenous drug use (IDU) places such women at an increased risk of sharing needles, which can lead to the spread of HIV and hepatitis.

Finally, the high proportion of illegal drug use among recently incarcerated women indicates a strong need for drug and alcohol treatment. Current estimates of drug treatment among jail inmates suggest that only 10% of drug-abusing offenders are offered drug treatment in jail (Freudenberg et al, 1998). Current data regarding drug use among incarcerated women in Multnomah County are collected via a quarterly testing of randomly chosen urine samples from incarcerated women at the Multnomah County maximum security jail.

High Risk Behavior

PTSD, substance abuse and history of physical and/or sexual abuse place women at an increased risk to engage in high-risk behavior. Such behavior includes intravenous drug use, sharing needles during IDU, trading sex for money, trading sex for drugs, having an increased number of sexual partners, and non-use of condoms during sexual intercourse. These behaviors put women at an increased risk of contracting sexually transmitted

diseases, encountering violence in daily activities, and reporting a history of homelessness. Incarcerated women with PTSD were more likely to have a history of lifetime substance abuse prior to arrest than incarcerated women without PTSD (Zlotnick, 1997).

Maternity

Maternity issues play a significant role in the health care needs of incarcerated women. While three-quarters of incarcerated women are single mothers, 8 – 10% of newly incarcerated women are pregnant (Muse, 1994). Findings from studies on the effect of incarceration and pregnancy outcomes vary. While some studies indicated that incarcerated births resulted in babies with higher birth weights (Egley et al, 1992), other studies showed the opposite (Shelton et al, 1983). With consideration to the SES of incarcerated women, jail often provides pregnant women with several conditions unavailable while not incarcerated. These conditions include protection from a violent domestic partner, consistent source of nutrition and workplace policy preventing pregnant women from unsafe work conditions.

Rationale for this study

As the number of women in correctional facilities increases, the corrections departments' responsibilities to provide care are further increased, as well. Thus, any strategies to increase efficiency in health care provision should be welcomed by corrections health providers. Providing health care that considers the background of these inmates and their typically high-risk behavior would help improve the health of a high-risk and

traditionally marginalized population. To date, no established studies have documented the personal histories, health needs, histories of substance abuse, mental health needs, history of homelessness and histories of physical and sexual abuse among women in an Oregon jail. This study presents demographic characteristics, prevalence of risk behaviors, prevalence of abuse and statistical models that predict high health needs of incarcerated women.

Methods

Overview

We interviewed eligible female inmates between January and March 1999 at a Multnomah County Jail using a structured questionnaire based on the Behavioral Risk Factor Surveillance System (BRFSS), the Impact of Events Scale (IES) and Traumatic Life Experiences (TLE). Human subjects approval was received from the Oregon Health Division's Institutional Review Board. We also received a Federal Certificate of Confidentiality from the National Institute on Drug Abuse to guarantee confidentiality of inmate responses regarding self-incriminating behavior, including caretaker of subject's child(ren) while incarcerated, history of trading sex for money or drugs and recent drug and alcohol use.

Setting – Multnomah County Jail (MCJ)

The Multnomah County Jail in which we conducted the study is one of five jails in Multnomah County, Oregon. The jail is a medium security facility originally built in 1988 to house 210 inmates. In 1988, MCJ had a total of five dormitories, with one dormitory for females that housed approximately 42 inmates. Since its inception, MCJ has undergone an extensive expansion process. The jail currently has seventeen dormitories, two of which are for females. The current housing capacity is 979 inmates, with housing for 160 female inmates.

All people arrested in Multnomah County are initially taken to the maximum security jail for the administration process. Inmates are either sent to the reception area for

processing or are released if the jail has reached maximum capacity. The administrative process involves fingerprinting, a photograph, a body cavity search and exchange of personal clothing for the jail uniform. Upon processing of personal information, all inmates receive both an identification bracelet and a dormitory card. The dormitory card includes the inmate's photograph, name, aliases, booking date, date of birth, identification number and disciplinary history.

The administrative classification department interviews inmates to determine appropriate housing. Accordingly, inmates are either kept at the high security jail or sent to either the medium or low security jails. The MCJ in which we held this study holds presentenced detainees, sentenced jail inmates and prisoners. Presentenced detainees are awaiting trial. Sentenced jail inmates have received a sentence of less than one year. Prisoners are often in jail for one of three reasons. First, after serving time in prison, an inmate may be transferred to a county jail to serve time for crimes committed in that county. The second and third reasons are that jails serve as holding facilities for prisoners awaiting a pickup from either the US Marshall or the Immigration and Naturalization Service.

The inmate to officer ratio in the two female dormitories at MCJ varies. Typically, the first dorm has a 74:1 ratio and the second dorm has a 65:1 ratio. Daytime officers are in the dormitory from 7.30 a.m. until 3.30 p.m. and evening officers are there from 3.30 p.m. until 11.30 p.m. No officer is in the dormitory from 11.30 p.m. to 7.30 a.m., during which time all inmates are locked in their individual cells. An estimated 90% of current

correctional officers working in the female dormitories at MCJ are females (Sergeant Lamb, Personal communication, March 25, 1999).

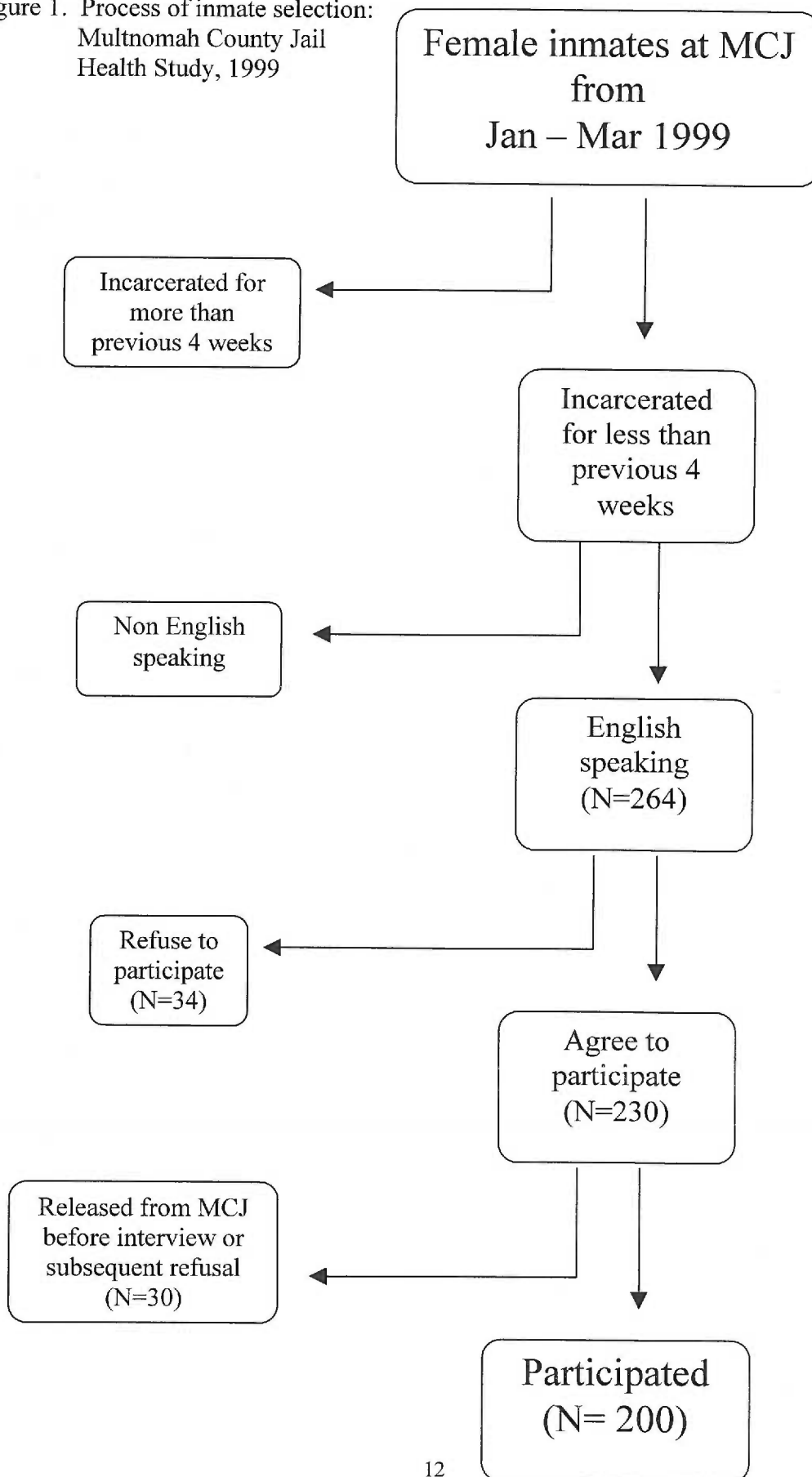
Subjects – Inclusion criteria

We approached all women who had been housed at MCJ within four weeks of the potential interview. Women were not eligible to participate if they were to be released the night before the scheduled interview. We re-approached women who had previously declined to participate in the study several days later to reconsider their refusal.

Subjects – Exclusion criteria

Female inmates who did not speak English and women who had been incarcerated for more than the previous four weeks, including prisoners, were not eligible to participate. Women who had already participated in the study were not allowed to participate a second time (See Figure 1).

Figure 1. Process of inmate selection:
Multnomah County Jail
Health Study, 1999



Subjects – Name retrieval

We retrieved a list of eligible female inmates from the log for both dormitories. The log includes the current stated name of the inmate, aliases, booking date, photograph of the inmate, disciplinary status, special needs (such as hearing impaired, non-English speaking, requiring lower bunk) and if the inmate is a prisoner. The log was examined each day to determine eligible inmates. We went through each dormitory roster to determine the list of eligible inmates. We approached inmates during the week from 9.00 a.m. to 10.30 a.m. and from 1.15 p.m. to 3.00 p.m. and on Sundays from 1.15 p.m. to 3.00 p.m. We did not approach inmates during clothing or bedding exchange, but did approach inmates during medication rounds.

After obtaining a list of eligible inmates, we spoke to inmates individually. We explained the study, requirements of eligibility and the contents of the three page consent form to each inmate. After obtaining verbal consent, the inmates signed one copy of the consent form and were provided a second copy to keep for their own records. If an inmate refused to participate, we questioned her on date of birth, race and reason for refusal. If non-participatory inmates were still at MCJ several days later, we reapproached them to see if they had changed their minds. Approximately 50% of those who refused were approached a second time to participate in the study.

Interview – Setting

We conducted all interviews in a private interview room in the medical clinic. Each morning the medical officer was provided with a list of the names, the dormitory and cell

of participating inmates. In the dormitories, inmates were called to the door for a medical visit. Interviews were held in the medical clinic so that participation was classified as medical and not as participation in a research study. This strategy protected the privacy of inmates who agreed to participate. Either the medical officer or the 'runner' (officer in charge of transporting inmates from one area of the jail to another) brought inmates from their dormitories to the medical clinic for the interview. All inmates waited in the clinic waiting area for their appointment from 5 to 90 minutes. Inmates who changed their mind while waiting were returned to their dormitories.

The interview room contained two desks and two chairs. One desk had packets of women's health information, while the interview was held at the second desk. Following jail protocol, officers searched all inmates before and after the interview to ascertain that nothing was being brought to or from the dormitories, with the exception of the health packets. We held all interviews in the medical clinic while the medical officer was on duty. Interviews lasted 15 to 30 minutes and were only held from 8.30 a.m. until 12.00 p.m. and from 1.00 p.m. until 3.00 p.m. during the week. Inmates on either work crew or kitchen duty were interviewed from 8.30 a.m. until 10.30 a.m. to avoid conflict with their work schedules.

Compensation - Packet of women's health information

All inmates who participated in the study were given pamphlets on women's health issues. Fourteen different pamphlets were placed on a table in the interview room. The pamphlets were published by the American College of Obstetricians and Gynecologists

and included the following topics: the abused woman, smoking cessation, birth control, the Pap smear, cancer prevention, weight control, mammography, menopause, lesbian health, sexually transmitted disease prevention, detecting and treating breast problems, drugs and pregnancy, sexuality and sexual problems, and depression. Inmates were allowed to take as many pamphlets as desired after completion of the interview.

Interview – Questionnaire development

All interviews followed a structured questionnaire based on questions from the Behavioral Risk Factor Surveillance System (US Department of Health and Human Services, 1998), the Impact of Events Scale (Zilberg et al, 1982) and the Traumatic Life Experiences scale (Silk-Walker, 1993). The questionnaire consisted of 104 questions (See Appendix 1).

Behavioral Risk Factor Surveillance System (BRFSS)

The BRFSS is a survey created by the Centers for Disease Control and Prevention (CDC) and administered by health departments in all 50 states. Oregon has conducted this survey since 1988 (OHD, 1997). The survey conducted by Oregon in 1998 consisted of 10 core sections and several optional modules that were either state added or CDC optional. Our research used questions from the following core sections: health status, health care access, tobacco use, demographics and women's health. Questions from the state-added module on sexual behavior and the CDC optional module on family planning were included. Approximately 24 percent of the questions on the questionnaire were from the BRFSS.

Impact of Events (IES)

The IES was used to assess symptoms related to traumatic life experiences commonly resulting in PTSD. The IES scale consists of two subscales, which measure the subject's use of avoidance ("I stayed away from reminders of it") and the existence of intrusive thoughts ("I thought about it when I didn't mean to") (Horowitz et al, 1979). The 20 item assessment tool evaluates the frequency and severity of symptoms associated with traumatic life experiences.

Traumatic Life Experiences (TLE)

The TLE scale is an eleven question tool used to measure the extent of traumatic events. The TLE was used in conjunction with the IES to determine traumatic life experiences, frequency with which they occurred, most traumatic event and earliest age at traumatic event. Use of both the IES and the TLE provided an adequate method of measuring PTSD symptoms. A high score from both IES and TLE indicated high mental health care needs (Zilberg et al, 1982).

Additional questions

Questions also focused on use of dental and medical health care services within the jail. Several questions focused on the use and awareness of MCJ's general, gynecological and mental health care services, including HIV and other STD testing. One question focused on the role of the five dollar health care service fee and its effect on an inmate's decision to seek contact with a health care provider while in jail. (Currently in all Multnomah

County jails, inmates are charged a fee of five dollars to see a health care provider. This policy was implemented in 1995 to reduce the number of health care provider visits. During 1992 to 1994, Multnomah County Corrections health care providers had an average of 22,660 patient visits a year. After implementation of the five dollar fee, the average number of patient visits a year during 1995 to 1997 was 12,007 (Corrections Health 1998 Annual Report.) Two questions regarded a history of trading sex for money or drugs, while two others regarded a history of intravenous drug use and history of sharing needles. Three questions focused on drug and alcohol use, including ever use, use in the month prior to arrest, and number of days of use in the month prior to arrest. Four questions focused on physical and sexual abuse and time of life during which abuse occurred (childhood, adolescence, adulthood, combination). Finally, eight questions focused on a history of homelessness, employment history, current reason for arrest, and recidivism.

Retesting and Reliability

Ten (5.0%) inmates were re-interviewed from several days to several weeks after the initial interview to determine the reliability of self-report. The reinterviews consisted of eleven non-personal questions from the original questionnaire. Reinterviews lasted approximately 2 minutes per inmate. Reinterviews were held in the dormitory in which the inmates resided, since personal and emotional issues were not addressed. Questions asked included date of birth, race, ethnicity, number of children, number of children under the age of eighteen, number of children under the age of one, highest grade or year of school completed, smoked at least one hundred cigarettes in lifetime and frequency of

smoking before incarceration. Approximately 20 percent of those reinterviewed stated a different level of education than originally claimed. Ten percent of the answers regarding frequency of smoking prior to incarceration were answered differently, as were ten percent of the answers regarding marital status. Overall, 96 percent of the answers were recalled consistently.

Data analysis

We calculated frequencies of descriptive characteristics including demographic and background characteristics in addition to frequencies of histories of physical, sexual and substance abuse, smoking, health care coverage, receiving supplemental income, maternity status, pregnancy status, use of women's health care services, use of jail health care services, family planning, use of birth control, number of sex partners, history of homelessness, reason for current arrest and recidivism. (See Appendix 2)

To test the hypothesis that women with a history of physical or sexual abuse have high health care needs when compared to women without a history of physical or sexual abuse, we created a definition for high health care needs based on responses to certain questions. Women were classified as having high health care needs if they met one of the following four criteria:

1. Self-rated health reported as fair or poor ("Would you say that in general your health is excellent, very good, good, fair or poor?").

2. Self-rated physical health reported as not good for more than half of the month prior to incarceration (“Now, thinking about your physical health, which includes physical illness and injury, how many days in the 30 days before your arrest was your physical health not good?”).
3. Self-rated mental health reported as not good for more than half of the month prior to incarceration (“Now, thinking about your mental health, which includes stress, depression, and problems with emotions, how many days in the 30 days before your arrest was your physical health not good?”).
4. Five or more years since last doctor visit (“About how long has it been since you last visited a doctor for a routine checkup... within the past year, within the past 2 years, within the past 5 years, five or more years?”).

For our analysis, we dichotomized potential independent variables including a history of physical and/or sexual abuse, lack of health care coverage, smoking status, trading sex for money or drugs, intravenous drug use, drug and alcohol use during the month prior to arrest, education, homelessness during the month prior to arrest, and recidivism.

Of 200 inmates who participated, one interview was terminated due to the hostility of the inmate. Results from this interview were not included in the final data analysis, reducing the total sample size to 199 participants. Of 199 participants, 115 (57.8%) were categorized as having high health care needs. We used Chi squares to determine the association between independent variables and the dependent variable. We fit univariate

logistic regression models using variables that were statistically associated using Chi square statistic at $p < 0.05$ with high health care needs.

We then used three forms of selection to test the independent variables for the logistic regression model. These forms included forward selection, backward elimination and forced entry. The five variables eligible for entry into the logistic regression models were: history of rape, history of physical assault, homelessness during month prior to arrest, employment status prior to arrest and heroin use during month prior to arrest. We only used variables in the forced entry selection that had statistical significance at $p < 0.05$ in the forward selection and backward elimination models.

We entered data using EpiInfo 6.0 (Dean et al, 1995) and exported the data file to SPSS 8.0 (SPSS, 1998) for statistical analysis. We reentered data from 10 (5.0%) questionnaires to ascertain accurate data entry. We found no discrepancy during this procedure.

Results

Study Population

Of 264 inmates approached for the study, 230 (87.1%) agreed to participate and 34 (12.9%) refused. Of the 34 inmates who refused to participate, 23 (67.7%) were Caucasian, 7 (20.6%) were African-American, 2 (5.8%) were American Indian and 2 (5.8%) were Hispanic. This racial and ethnic breakdown of non-participatory inmates is similar to the racial and ethnic breakdown of participatory inmates. When asked for a reason for refusal, 14 (41.2%) women stated that topics covered in the study were “too personal”. Twelve (35.3%) women stated that they were “disinterested”. The remaining 8 (23.5%) women stated reasons for refusal as either being ill, experiencing symptoms of drug or alcohol withdrawal or not trusting the interviewer. Five women could not participate in the study due to the language barrier. The two languages spoken by these women were Spanish and Chinese.

Eight (8, 20%) inmates who originally refused to participate eventually agreed. The most common reason for participating after initial refusal was increased trust in the interviewer. The second most commonly reported reason was reduced symptoms of drug withdrawal.

Of the 230 women who agreed to participate, 30 (13%) inmates were either released from MCJ before the scheduled interview date or refused to participate after arriving at the medical clinic. We interviewed a total of 200 women. One interview was terminated due to the inmate’s hostility. Results from this interview were not included in the analysis. A

second inmate refused to answer questions from the TLE scale, the IES and additional questions regarding physical and sexual abuse. Data from a total of 199 interviews were included for analysis. Out of 264 eligible inmates, 199 (75%) inmates' interviews were used for this analysis.

Table 1 presents demographic characteristics of inmates who participated in the study. The majority of inmates were Caucasian, between 30-39 years of age, single, had at least 2 children, did not have a high school diploma, did not receive any form of government assistance and had a history of homelessness. Figure 2 presents data on health care coverage. Almost sixty percent (57.3%) of the women had health care coverage prior to incarceration. Among those with health care coverage, almost eighty percent (78.9%) had coverage through the Oregon Health Plan. Figures 3 and 4 present data on current reason for incarceration and history of incarcerations. Eighty seven (87) percent of the women interviewed were recidivists.

Table 1. Demographic characteristics by racial and ethnic categories of study subjects, Multnomah County Jail Health Study, 1999

	Caucasian	African-American	American Indian	Other*	Total
Race / Ethnicity					Number (%)
Caucasian	127				127 (63.8%)
African-American		47			47 (23.6)
Alaska Native/American Indian			19		19 (9.5)
Other				6	6 (3.0)
Age groups (years)					
20-29	44 (34.6)	12 (25.5)	10 (52.6)	2 (33.3)	68 (34.2%)
30-39	58 (45.7)	18 (38.3)	4 (21.1)	4 (66.6)	84 (42.2)
40-49	23 (18.1)	15 (31.9)	5 (26.3)	0 (0)	43 (21.6)
50-59	1 (.8)	2 (4.3)	0 (0)	0 (0)	3 (1.5)
60+	1 (.8)	0 (0)	0 (0)	0 (0)	1 (0.5)
Marital status					
Single	31 (24.4)	19 (40.4)	9 (47.4)	2 (33.3)	61 (30.7%)
Married	16 (12.6)	3 (6.4)	1 (5.3)	0 (0)	20 (10.1)
Separated	12 (9.4)	7 (14.9)	1 (5.3)	1 (16.7)	21 (10.6)
Divorced	27 (21.3)	4 (8.5)	1 (5.3)	1 (16.7)	33 (16.6)
Widowed	2 (1.6)	3 (6.4)	1 (5.3)	0 (0)	6 (3.0)
Living with partner	39 (30.7)	11 (23.4)	6 (31.6)	2 (33.3)	58 (29.1)
Number of children					
0	28 (22)	2 (4.3)	4 (21.1)	3 (50.0)	37 (18.6%)
1	24 (18.9)	11 (23.4)	4 (21.1)	0 (0)	39 (19.6)
2	33 (26)	12 (25.5)	4 (21.1)	1 (16.7)	50 (25.1)
3	28 (22)	16 (34)	2 (10.5)	2 (33.3)	48 (24.1)
4 or more	14 (11)	6 (12.7)	5 (26.4)	0 (0)	25 (12.5)
Education					
Less than 7 years	1 (0.8)	0 (0)	0 (0)	0 (0)	1 (0.5%)
7-11 grade	49 (38.6)	18 (38.3)	10 (52.6)	2 (33.3)	79 (39.7)
Earned GED	21 (16.5)	2 (4.3)	3 (15.8)	3 (50.0)	29 (14.6)
Graduated high school	26 (20.5)	15 (31.9)	1 (5.3)	1 (16.7)	43 (21.6)
Some college	23 (18.1)	8 (17)	5 (26.3)	0 (0)	36 (18.1)
Graduated college	6 (4.7)	4 (8.5)	0 (0)	0 (0)	10 (5.0)
Graduate education degree	1 (.8)	0 (0)	0 (0)	0 (0)	1 (0.5)
Receive government assistance**					
Yes	32 (25.2)	19 (40.4)	6 (31.6)	2 (33.3)	58 (29.1%)
No	95 (74.8)	28 (59.6)	13 (68.4)	4 (66.6)	141 (70.9)
Pregnant at time of interview					
Yes	6 (4.7)	4 (8.5)	0 (0)	0 (0)	10 (5.0%)
No	121 (95.3)	43 (91.5)	19 (100)	6 (100)	189 (95.0)
History of homelessness					
Yes	88 (69.3)	31 (66)	13 (68.4)	4 (66.6)	136 (68.3%)
No	39 (30.7)	16 (34)	6 (31.6)	2 (33.3)	63 (31.7)

* Includes Hispanic and Asian

** At time of arrest

Figure 2. Health care coverage among inmates, Multnomah County Jail Health Study, 1999

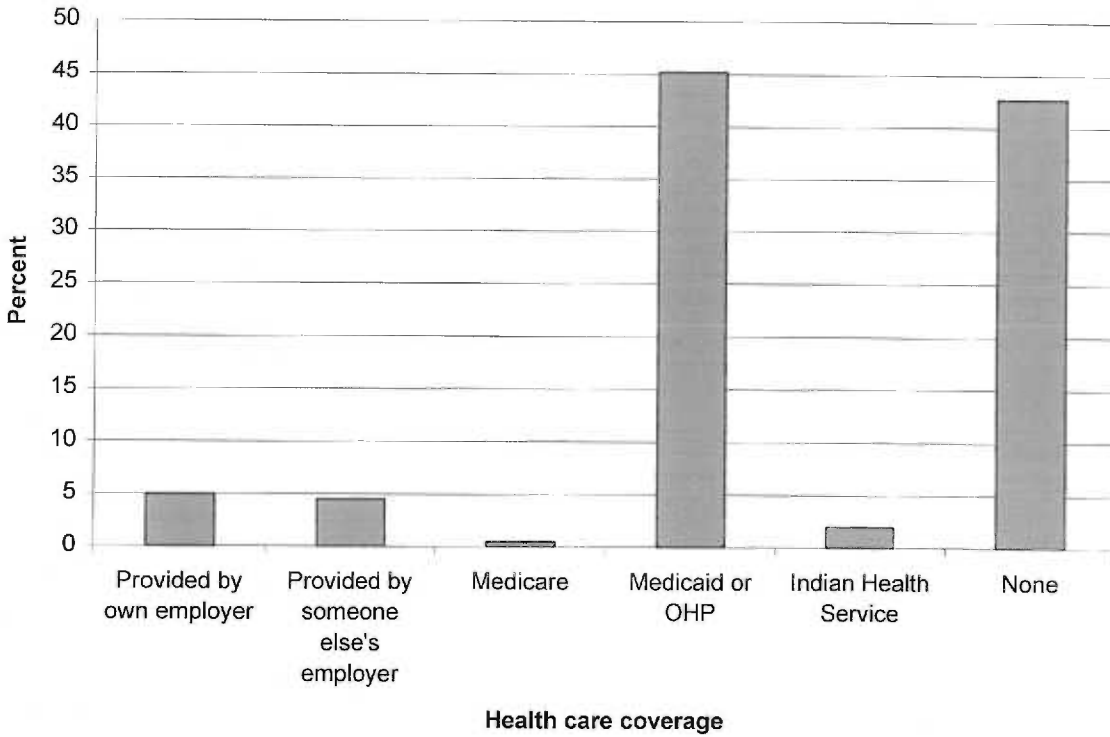


Figure 3. Reason for current arrest, Multnomah County Jail Health Study, 1999

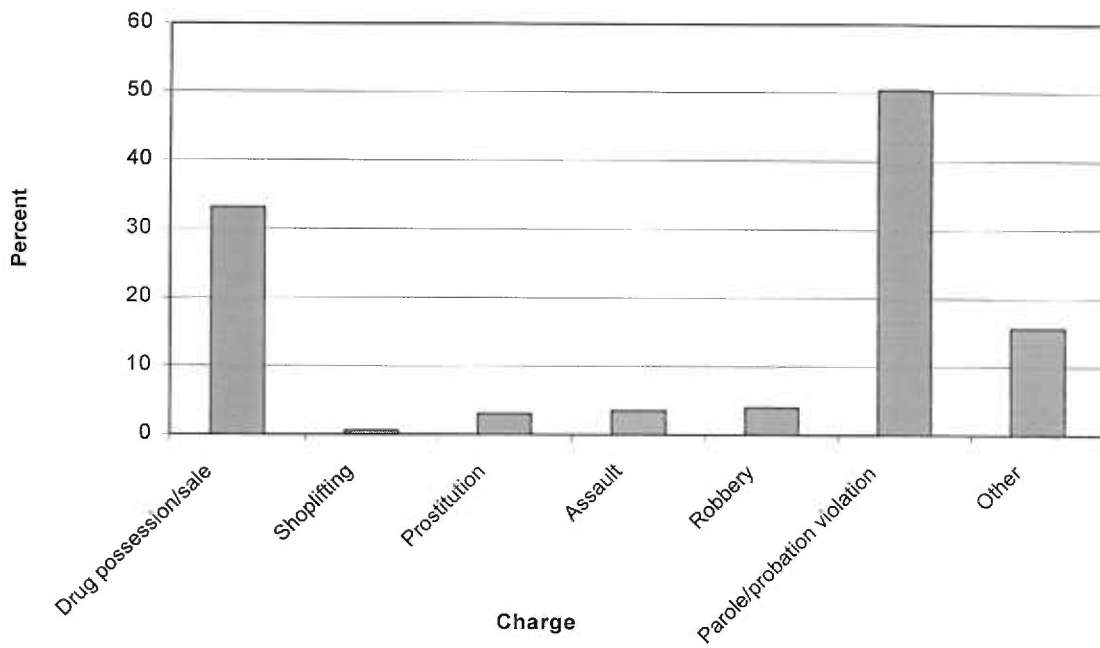
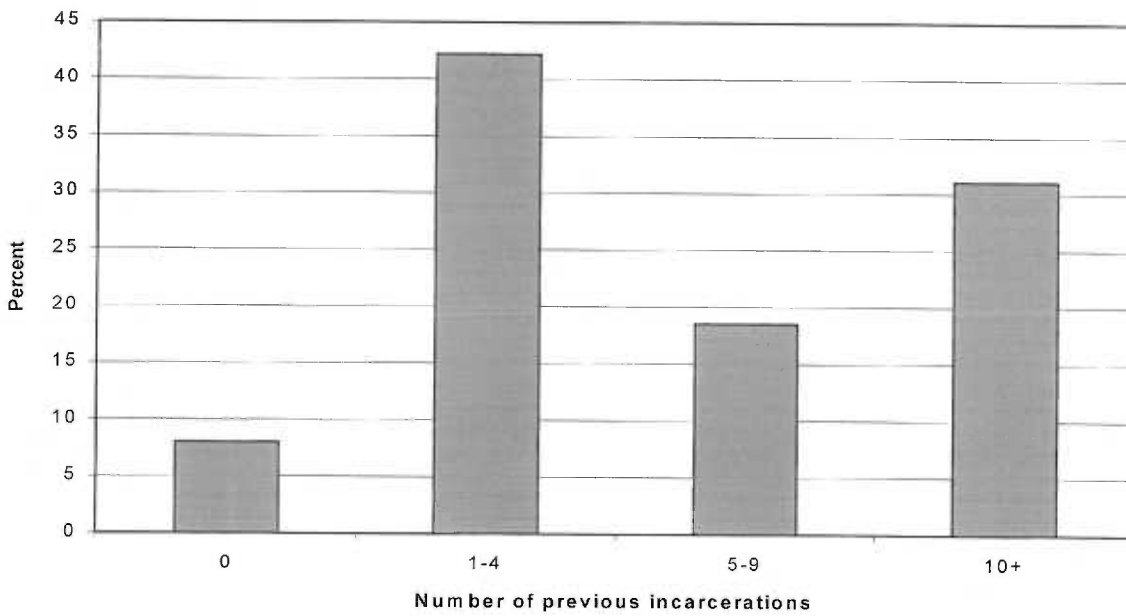


Figure 4. History of previous incarcerations of inmates, Multnomah County Jail Health Study, 1999



Prevalence of High Risk Behavior

Figure 5 presents data on recent number of sex partners. More than forty percent (42.8%) of all women interviewed stated that at some time in their life they had traded sex for money or drugs. Women who had traded sex for money or drugs were more likely to report having used a condom during last sexual intercourse ($p < 0.001$), having sex with both men and women ($p < 0.005$) and having less than a high school education ($p < 0.03$). Thirty five (35, 17.6%) of the women reported more than five sex partners in the past year.

Figure 5. Number of sex partners in past year among inmates, Multnomah County Jail Health Study, 1999

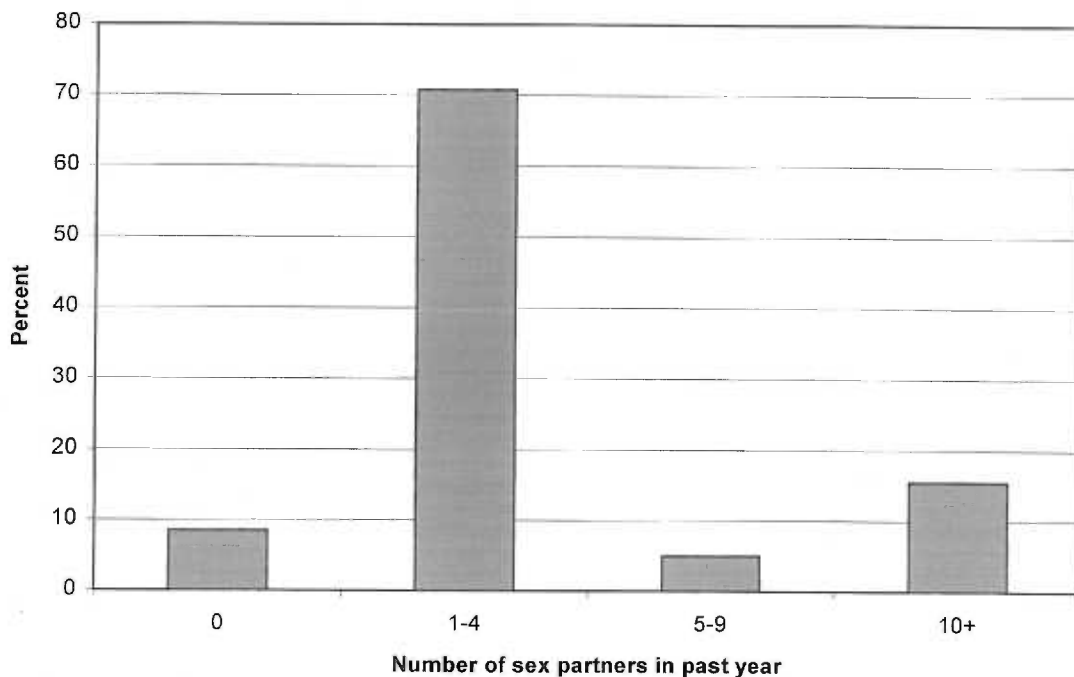
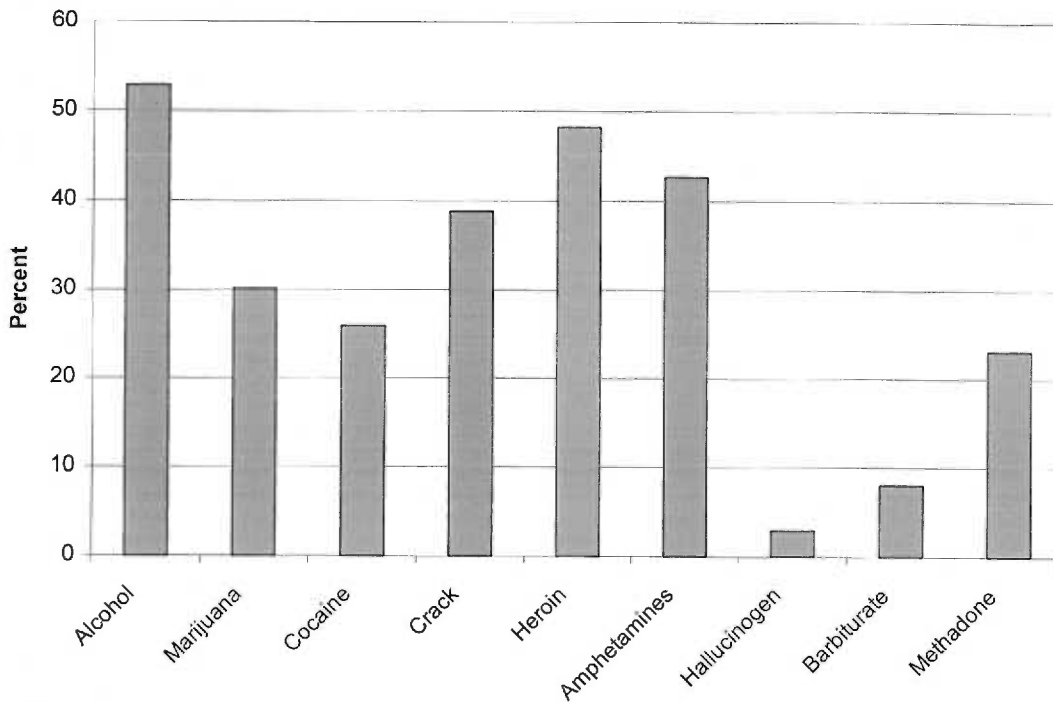


Figure 6 provides data regarding drug and alcohol use during month prior to arrest.

Among those women who reported ever use of the respective drug, 54 (38.8%) women reported use of crack, 50 (42.7%) women reported use of amphetamines, 41 (48.2%) women reported use of heroin and 41 (25.9%) women reported use of cocaine during the month prior to incarceration. When compared to Caucasian women, African-American women were less likely to have ever used intravenous drugs ($p<0.001$), cocaine ($p<0.05$), heroin ($p<0.001$), amphetamines ($p<0.001$), hallucinogens ($p<0.001$) and methadone ($p<0.001$). One hundred five (105, 52.8%) women had used intravenous drugs in their life, of which over seventy five percent (76.2%) were Caucasian ($p<0.001$). Out of 105 women who had used intravenous drugs, 59 (56.2%) women reported a history of sharing

needles during intravenous drug use, with Caucasian women most likely to report a history of sharing needles ($p < 0.001$).

Figure 6. Use of drug in month prior to arrest given ever use of drug, Multnomah County Jail Health Study, 1999



Prevalence of Physical and Sexual Abuse

Of the 198 women who responded to questions on physical and sexual abuse, 157 (79.3%) women reported physical abuse by a partner or family member. Women with a history of physical abuse were more likely to be Caucasian ($p < 0.03$) and to report a history of sexual abuse ($p < 0.03$). Women with a reported history of physical abuse were more likely to report having ever used amphetamines ($p < 0.02$), hallucinogens ($p < 0.04$) and intravenous drugs ($p < 0.05$). In addition, women with a reported history of physical abuse were more likely to report a history of homelessness ($p < 0.01$). One hundred thirty

four (134, 67.7%) women reported being sexually abused. Women who reported a history of sexual abuse were more likely than those without a history of sexual abuse to report a history of trading sex for money or drugs ($p<0.001$), ever use of methadone ($p<0.04$), ever use of intravenous drugs ($p<0.05$), a history of homelessness ($p<0.001$), being Caucasian ($p<0.04$) and reporting a history of physical abuse ($p<0.001$).

Awareness and Use of Jail Health Care Services

Health care services offered at MCJ include general, gynecological and mental health. The largest percentage of women were aware of the general health care service (75.9%) followed by the mental health care service (61.3%). Women were least likely to report awareness of the gynecological service, of which only 81 (40.7%) women were aware. One hundred nineteen (119, 59.8%) women stated that the five dollar health care service fee prevented them from using the health care service. Women who reported trading sex for money or drugs were more likely to report that the health care fee limited them from using the available jail health services ($p<0.03$).

Logistic Regression Models – Univariate

Table 2 presents a summary of the odds ratios of independent variables using a univariate analysis. History of rape, physical assault, homelessness during the month prior to arrest, lack of employment at time of arrest, and reported use of heroin during the month prior to arrest were all individually associated with high health care needs. The employment variable was not used in the final logistic regression model due to its strong correlation with the homelessness variable as indicated by a high gamma value. Only three variables, ever being physically assaulted, homelessness during the month prior to arrest

and heroin use during the month prior to arrest, were used in the final logistic models.

One hundred twenty seven (63.8%) women were categorized as having high health care needs.

Table 2. Predictors of high health care needs using univariate logistic regression: Multnomah County Jail Health Study, 1999

Variable	OR	95% C.I.
History of rape	1.9	(1.0, 3.4)
History of physical assault	2.4	(1.3, 4.7)
Homeless during month prior to arrest	2.6	(1.3, 5.2)
Employment status	0.5	(0.3, 0.9)
Heroin use during month prior to arrest	3.4	(1.4, 8.1)

Logistic Regression Models - Multivariate

We used three strategies for logistic regression modeling to predict high health care needs: forward selection, backward elimination, and forced entry. All three models produced the same results when using the three independent variables. These results are presented in Table 3. All variables reached significance at $p < 0.05$.

Table 3. Predictors of high health care needs using multivariate logistic regression with simultaneous control of all variables, Multnomah County Jail Health Study, 1999

Variable	OR	95% C.I.
History of physical assault	2.3	(1.2, 4.6)
Homeless during month prior to arrest	2.2	(1.1, 4.5)
Heroin use during month prior to arrest	3.1	(1.2, 7.5)

Discussion

In this study, we examined potential predictor variables for high health care needs using logistic regression models. High health care need was defined as either self-rating health as fair or poor, self-reporting poor physical or mental health for more than half the month prior to arrest or reporting last doctor's visit five or more years ago. Three variables were associated with high health care needs: ever being physically assaulted, homelessness during month prior to arrest, and use of heroin during month prior to arrest.

Self-rated health has been documented as an appropriate predictor for mortality in the general population (Idler et al, 1997). The high correlation between self-rating physical and mental health as poor for more than half of the month prior to incarceration indicates that women who reported fair or poor general health were also likely to report having poor physical or mental health during the month prior to arrest. These strategies for assessing self-rated health serve as indicators for health status, which in turn indicates a need for high health care.

Two questions focused on a history of physical abuse. One question focused on physical abuse by a partner or family member ("Have you ever been hit, punched, stabbed, beaten, burned, thrown out a window or physically harmed by a sexual partner or family member?"). The second question focused on physical assault by anyone (Have you ever experienced physical assault?). Over three quarters (79.3%) of the women reported physical abuse by a partner or family member, while 74.9% of the women reported physical assault by anyone. Two factors can account for the discrepancy between these

two proportions. The first question is inclusive of many behaviors that many incarcerated women did not view as physical assault, including being hit or burned. The proportion of women who responded positively to the first question but negatively to the second question may be an artifact due to the greater detail to descriptives. The second question regards physical assault ever by anyone, not specifically a partner or family member. Hence, women who responded positively to the first question may have responded negatively to the second question. In the final analysis, the variable regarding physical assault ever by anyone had an association with high health needs, while the physical abuse by a partner or family member variable did not.

Two questions also focused on a history of sexual abuse. One question focused on sexual abuse (“Have you ever been forced to engage in sexual acts, penetrated by penis or foreign object, touched in a sexual manner, forced to perform oral sex, against your will?”). The second question focused on rape (“Have you ever experienced rape?”). Over two thirds (67.7%) of the women reported sexual abuse, while 58.8% reported a history of being raped. Again, the greater detail in description of the two events may contribute to the differential positive responses. Women may have been more likely to consider molestation and forced oral sex as sexual abuse but not rape. In the final analysis, a reported history of rape had an association with high health needs but a history of sexual abuse did not. However, due to the high correlation between a history of rape and a history of physical assault, we dropped the rape variable from the model. Many women who reported being raped also reported being physically assaulted.

Prevalences of physical and sexual abuse were higher in this study than other studies. Richie reported 40% of the women interviewed at Riker's Island Jail in New York City had a history of physical abuse and 33% of the women reported a history of sexual abuse (Richie et al, 1996). The Bureau of Justice (US Department of Justice, 1998) reported 48% of female jail inmates as having a history of physical or sexual abuse. Our study found that 79.9% of the women reported ever being physically assaulted or raped. Over 85% of the women reported being either physically abused (by a sexual partner or family member) or being sexually abused (including forced to perform oral sex and being touched in a sexual manner against your will). An important factor in addressing differential proportions of abusive histories could be differing survey administration and methods.

Several studies have addressed drug use among recently incarcerated women, but they focus on the frequency of drug use among drug-using inmates (El-Bassell et al, 1996). Questions in this study focused on ever use of drugs, drug use within the month prior to incarceration and number of days of use of drug within the month prior to arrest. More than two thirds (69.8%) of the women in this study reported ever use of crack, as opposed to previous documentation of 49% of recently incarcerated women (Richie et al, 1996). Almost half (42.7%) of the women in this study reported ever use of heroin, as compared to 30% of the participants in the study by Richie et al among recently incarcerated women in Riker's Island Jail (1996). Finally, more than half (52.8%) of the women in this study reported ever use of intravenous drugs, more than twice the proportion of previous findings of 25% of incarcerated women (Richie et al, 1996). Reasons for the

change in reported use of illicit drugs could be partially accounted for by differing methods of survey administration. Richie et al interviewed jail inmates in conjunction with the mandated health examination. We conducted surveys within the first four weeks of incarceration. Inmates who participated in our study may have felt more comfortable reporting illicit drug use due to the fact that our surveys were not held in conjunction with correctional health staff.

Several studies conducted among recently incarcerated women focused on the relationship between high risk behavior, such as trading sex for money or drugs and use of illicit drugs, and a history of physical and sexual abuse (Richie et al, 1996). The purpose of this study was to collect data regarding such behavior, but to focus on determining predictors for high health needs. Prevalences of high risk behavior were high among our population. Nearly three quarters (73.4%) of the inmates were smokers, over two thirds (68.3%) reported ever being homeless, one fifth (20%) reported five or more sex partners during the past year and close to half (42.2%) reported having ever traded sex for money or drugs. The largest proportion (50.3%) of women were incarcerated for parole/probation violation. Parole/probation violations (PV) include testing positive for drugs, failure to report to parole/probation officer (PO), failure to update PO on relocation and numerous other infractions. The second most commonly stated reason (23.1%) for arrest was drug possession or sale.

Findings from this study can contribute to the arena of Corrections Health in two ways. First, a great deal of descriptive data have been collected to further increase knowledge

regarding the background characteristics, previous access to health care, previous use of health care services, maternity, drug and alcohol use, history of traumatic experiences, homelessness, previous employment and history of previous incarcerations. Such data can be used to inform policy makers regarding the characteristics and needs of recently incarcerated women. Second, modeling high health care needs resulted in determining three variables predictive of such health needs. The predictors included a history of physical assault, reported homelessness during the month prior to incarceration and use of heroin during the month prior to incarceration. Health care providers involved in the inmate screening process could implement questions regarding these three variables during the initial inmate interview. However, questions regarding recent drug use may be difficult to implement into such a procedure given that the health care provider would be asking information regarding inherently self-incriminating behavior.

Limitations

All questions from the interview focused on self-reported answers. We were not able to compare inmates' responses to medical or correctional records. Responses to questions also depended on the inmates' interpretations of the questions. Questions on physical and sexual abuse included descriptions of the respective forms of abuse. However, inmates could respond according to their perception of abuse and not the definition given during the interview.

The BRFSS, the IES and the TLE have not been validated among an incarcerated population. In addition, the association between self-rated health and health status has not been validated among incarcerated populations. This indicates a need of the validation of both mental and physical health assessment tools among incarcerated populations.

Finally, the small sample size did not allow adequate power to thoroughly address racial and ethnic differences in risk factors for high health care needs. In the final multivariate logistic regression model, we both controlled for and stratified by race. We categorized participants into two racial subgroups: Caucasian and non-Caucasian. Controlling for race did not affect the results of the multivariate logistic regression model. Stratifying by race in the multivariate logistic model resulted in a decrease in the odds ratios of the three risk factors for Caucasians and an increase in the odds ratios for non-Caucasians.

However, these results were not significant at $p < 0.05$. A larger sample size would allow

us to further address any potential differences in risk factors among the racial and ethnic groups.

Conclusions

Results from this study present a great deal of information on history of health care use, access to health care, use of jail health services, drug and alcohol use (both lifetime and current), traumatic life experiences and history of incarceration of female jail inmates in Multnomah County Jail. Frequencies of drug use, history of physical abuse and history of sexual abuse in this study were higher than frequencies from previous studies.

Frequencies of history of homelessness and high risk behavior, including trading sex for money or drugs and use of intravenous drugs, were also higher than results from other studies.

We modeled factors involved with high health care needs. Significant independent variables included a history of physical assault, homelessness during the month prior to arrest, and use of heroin during the month prior to arrest. Female inmates who had one of the three characteristics (history of physical assault, recent homelessness, recent heroin use) were at a greater risk for reporting high health care needs when compared to women without such characteristics. This information can be used during the inmate health screening process to identify inmates with high health care needs.

References

American College of Physicians, National Commission on Correctional Health Care, American Correctional Health Services Association, "The Crisis in Correctional Health Care: The Impact of the National Drug Control Strategy on Correctional Health Services", Annals of Internal Medicine 1992; 117 (1): 71-77

Berkowitz, G., Brindis, C., Clayson, Z., Peterson, S. "Options for Recovery: Promoting Success among Women Mandated to Treatment", Journal of Psychoactive Drugs 1996; 28 (1): 31-38

Center for Population Research and Census, US Bureau of the Census, 1990

Corrections Health – 1998 Annual Report: Comparison 1990-1998 Adult Facilities, 1998

Dean, A.G., Dean, J.A., Coulombier, D., Brendel, K.A., Smith, D.C., Burton, A.H., Dicker, R.C., Sullivan, K., Fagan, R.F., Arner, T.G. EpiInfo, Version 6: Wordprocessing, Database, and Statistics Program for Public Health on IBM-Compatible Microcomputers. Centers for Disease Control and Prevention, Atlanta, Georgia, USA, 1995

Egley, C.C., Miller, D.E., Granados, J.L., and Fogel, C.I. "Outcome of Pregnancy During Imprisonment", The Journal of Reproductive Medicine 1992; 37 (2): 131-134

El-Bassel, N., Gilbert, L., Schilling, R.F., Ivanoff, A., and Borne, D. "Correlates of Crack Abuse Among Drug-Using Incarcerated Women: Psychological Trauma, Social Support, and Coping Behavior", American Journal of Drug and Alcohol Abuse 1996; 22 (1): 41-56

El-Bassel, N., Ivanoff, A., Schilling, R.F., Gilbert, L., Chen, D. "Correlates of Problem Drinking Among Drug-Using Incarcerated Women", Addictive Behaviors 1995; 20 (3): 359-369

Fogel, C.I. "Hard Time: The Stressful Nature of Incarceration For Women", Issues in Mental Health Nursing 1993; 14: 367-377

Fogel, C.I., Martin, S.L. "The Mental Health of Incarcerated Women", Western Journal of Nursing Research 1992; 14 (1): 30-40

Freudenberg, N., Wilets, I., Greene, M.B., and Richie, B.E. "Linking Women in Jail to Community Services: Factors Associated With Rearrest and Retention of Drug-Using Women Following Release From Jail", JAMWA 1998; 53 (2): 89-93

Horowitz, M., Wilner, N. and Alvarez, W. "Impact of Events Scale: A Measure of Subjective Stress," Psychosomatic Medicine 1979; 41(3): 209-218

Idler, E.L. and Benyami, Y. "Self-Rated Health and Mortality: A Review of Twenty-Seven Community Studies," Journal of Health and Social Behavior 1997; 38: 21-37

Muse, D. "Parenting From Prison", Mothering 1994; 72: 98-106

Oregon Health Division, "Men and Women Behaving Badly," Oregon Health Trends (48): December 1997

Richie, B.E., and Johnsen, C. "Abuse Histories Among Newly Incarcerated Women in a New York City Jail", JAMWA (1996); 51 (3): 111-117

Safyer, S.M., and Richmond, L. "Pregnancy Behind Bars", Seminars in Perinatology (1995); 19 (4): 314-322

Shelton, B., Armstrong, F., and Cochran, S.E. "Childbearing While Incarcerated", American Journal of Maternal and Child Nursing (1983); 8: 23-24

Silk-Walker, P., American Indian revision of Diagnostic Interview Schedule for Adults retitled Traumatic Life Experiences: Robins, L.N., Helzer, J.E., Croughan, J., and Ratcliff, K.S. "National Institute of Mental Health Diagnostic Interview Schedule", Archives of General Psychiatry (1981); 38: 381-389

Singer, M.I., Bussey, J., Song, L., and Lunghofer, L. "The Psychosocial Issues of Women Serving Time in Jail", Social Work 1995; 40 (1): 103-113

SPSS Inc. Release Number 8.0, 1998, Chicago, Illinois.

Taylor, S.D. "Women Offenders and Reentry Issues", Journal of Psychoactive Drugs 1996; 28 (1): 85-93

Teplin, L.A., Abram, K.M., and McClelland, G.M. "Mentally Disordered Women in Jail: Who Receives Services?", American Journal of Public Health 1997; 87 (4): 604-609

US Department of Health and Human Services. *Health: United States, 1998, with Socioeconomic Status and Health Chartbook*

US Bureau of the Census, Current Population Reports, *Poverty in the United States: 1997*, U.S. Government Printing Office

US Department of Health and Human Services, Centers for Disease Control and Prevention, *1998 Behavioral Risk Factor Surveillance System Questionnaire*

US Department of Justice, National Institute of Justice, *1997 Drug Use Forecasting Annual Report on Adult and Juvenile Arrestees; 1998*

US Department of Justice, Office of Justice Programs. *Profile of Jail Inmates 1996*. Washington, DC: Bureau of Justice Statistics, National Institute of Justice; April 1998

US Department of Justice, Office of Justice Programs. *Prison and Jail Inmates at Midyear 1998*. Washington, DC: Bureau of Justice Statistics, National Institute of Justice; March 1999

Veysey, B.M., De Cou, K., and Prescott, L. "Effective Management of Female Jail Detainees with Histories of Physical and Sexual Abuse", American Jails (1998); May/June: 50-54

Zilberg, N.J., Weiss, D.S. and Horowitz, M.J. "Impact of Event Scale: A Cross-Validation Study and Some Empirical Evidence Supporting a Conceptual Model of Stress Response Syndrome," Journal of Consulting and Clinical Psychology 1982; 50(3): 407-414

Zlotnick, C. "Posttraumatic Stress Disorder (PTSD), PTSD Comorbidity, and Childhood Abuse among Incarcerated Women", The Journal of Nervous and Mental Disease 1997; 185 (12): 761-763

Appendix A

The following questions are to find out a bit about you. As mentioned in the consent form, everything you say will be confidential and your name will not appear anywhere on this questionnaire. If you do not understand a question, please ask for clarification.

___/___/___
Mo/Dd/Yr

IV Code

- 1) What is your date of birth?
___/___/___
- 2) What is your race?
 (1) ___ Caucasian
 (2) ___ African-American
 (3) ___ Asian / Pacific Islander
 (4) ___ Alaska Native / American Indian
 (5) ___ Other (specify)
- 3) Are you of Spanish or Hispanic origin?
 (1) ___ Yes
 (0) ___ No
- 4) How tall are you? Can I measure your height?
 _____ in.
- 5) How much do you weigh? Can I measure your weight?
 _____ lbs.
- 6) Are you
 (1) ___ Single
 (2) ___ Married
 (3) ___ Separated
 (4) ___ Divorced
 (5) ___ Widowed
 (6) ___ Living with partner
- 7) Do you have any children?
 (1) ___ Yes
 (0) ___ No
- 8) If yes, how many?
 ___ (# of children)
- 9) How many under the age of 18?

1. ___/___/___
2. ___
3. ___
4. ___
5. ___
6. ___
7. ___
8. ___
9. ___

- 10) How many under the age of 1?

- 11) Who is taking care of your child/children while you're here?
(1) ___ Spouse/partner
(2) ___ Maternal grandparent
(3) ___ Paternal grandparent
(4) ___ Maternal sibling
(5) ___ Paternal sibling
(6) ___ Friend of the family
(7) ___ Foster care
(8) ___ Other (specify)
(9) ___ No children
- 12) What is the highest grade or year of school you completed?
(1) ___ Less than 7 years
(2) ___ 7-11 grade
(3) ___ Graduated high school
(4) ___ Earned GED
(5) ___ Some college
(6) ___ Graduated college
(7) ___ Graduate education degree
- 13) What was your (family) income in 1998? Include all sources.
\$ _____
- 14) Do you receive any income from welfare, food stamps, or SSI (supplemental security income)?
(1) ___ Yes
(0) ___ No
- 15) Do you receive any income from Aid to Families with Dependent Children?
(1) ___ Yes
(0) ___ No
- The next questions focus on how you feel about your health.*
- 16) Would you say that in general your health is
(1) ___ Excellent
10. __
11. __
12. __
13. _____
14. __
15. __
16. __

- (2) ___ Very good
 (3) ___ Good
 (4) ___ Fair
 (5) ___ Poor

17) Now, thinking about your physical health, which includes physical illness and injury, how many days in the 30 days before your arrest was your physical health *not good*? 17. __
 __ (# of days)

18) Now, thinking about your mental health, which includes stress, depression, and problems with emotions, how many days in the 30 days before your arrest was your mental health *not good*? 18. __
 __ (# of days)

The next questions focus on your access to health care and health care insurance.

19) Do you have any kind of health care coverage, including health insurance, prepaid plans such as HMOs, or government plans such as Medicare? 19. __
 (1) ___ Yes
 (0) ___ No

20) What type of health care coverage do you use to pay for most of your medical care? Is coverage through 20. __
 (1) ___ Your employer
 (2) ___ Someone else's employer
 (3) ___ Plan bought by self or someone else
 (4) ___ Medicare
 (5) ___ Medicaid or OHP
 (6) ___ The military, CHAMPUS, TriCare, VA
 (7) ___ Indian Health Service
 (8) ___ Other (specify)
 (9) ___ No insurance

21) During the past 12 months, was there any time that you did not have any health insurance or coverage? 21. __
 (1) ___ Yes
 (0) ___ No
 (2) ___ No insurance

22) Was there a time during the last 12 months, *when you were not in jail*, and you needed to see a doctor, but could not because of the cost? 22. __
 (1) ___ Yes

- (0) ___ No
(2) ___ No insurance

The next questions ask about your most recent visit to a doctor and dentist.

- 23) About how long has it been since you last visited a dentist or dental hygienist?
(1) ___ Within the past year
(2) ___ Within the past 2 years
(3) ___ Within the past 5 years
(4) ___ 5 or more years
- 24) Were you in jail the last time you saw a dentist or dental hygienist?
(1) ___ Yes
(0) ___ No
- 25) About how long has it been since you last visited a doctor for a routine checkup?
(1) ___ Within the past year
(2) ___ Within the past 2 years
(3) ___ Within the past 5 years
(4) ___ 5 or more years
- 26) Were you in jail the last time you saw a doctor for a routine checkup?
(1) ___ Yes
(0) ___ No

23. __

24. __

25. __

26. __

Now I am going to ask you questions regarding smoking cigarettes.

- 27) Have you smoked at least 100 cigarettes in your entire life?
(1) ___ Yes
(0) ___ No
- 28) Before you were arrested, did you smoke cigarettes everyday, some days, or not at all?
(1) ___ Everyday
(2) ___ Some days
(3) ___ Not at all

27. __

28. __

- 29) When not in jail, on the average, about how many cigarettes do you smoke?
__ (# cigarettes/day) 29. __
- 30) Have you ever tried to quit smoking?
(1) __ Yes
(0) __ No
(2) __ Don't smoke 30. __
- 31) How many times?
__ (# of attempts to quit smoking) 31. __
- The next questions focus on women's health and women's health services you may or may not have received.*
- 32) A mammogram is an x-ray of each breast to look for breast cancer. Have you ever had a mammogram?
(1) __ Yes
(0) __ No 32. __
- 33) How long has it been since you had your last mammogram?
(1) __ Within the past year
(2) __ Within the past 2 years
(3) __ Within the past 5 years
(4) __ 5 or more years
(5) __ Never had a mammogram 33. __
- 34) Have you ever had a mammogram while in jail?
(1) __ Yes
(0) __ No
(2) __ Never had a mammogram 34. __
- 35) A clinical breast exam is when a doctor, nurse, or other health professional feels the breast for lumps. Have you ever had a clinical breast exam?
(1) __ Yes
(0) __ No 35. __
- 36) How long has it been since your last clinical breast exam?
(1) __ Within the past year
(2) __ Within the past 2 years 36. __

- (3) ___ Within the past 5 years
 (4) ___ 5 or more years
 (5) ___ Never had a clinical breast exam
- 37) Have you ever had a clinical breast exam while in jail? 37. ___
 (1) ___ Yes
 (0) ___ No
 (2) ___ Never had a clinical breast exam
- 38) A Pap smear is a test for cancer of the cervix. Have you ever had a Pap smear? 38. ___
 (1) ___ Yes
 (0) ___ No
- 39) How long has it been since your last Pap smear? 39. ___
 (1) ___ Within the past year
 (2) ___ Within the past 2 years
 (3) ___ Within the past 5 years
 (4) ___ 5 or more years
 (5) ___ Never had a Pap smear
- 40) Have you ever had a Pap smear while in jail? 40. ___
 (1) ___ Yes
 (0) ___ No
 (2) ___ Never had a Pap smear

The next questions are about your experiences with family planning services and your use of birth control.

- 41) Before you came to jail, were you sexually active within the past year? 41. ___
 (1) ___ Yes
 (0) ___ No
- 42) What type of birth control do you use? Please list all that apply. 42. ___
 (1) ___ Condom
 (2) ___ Birth control pill
 (3) ___ Norplant
 (4) ___ Shots (Depo-Provera)
 (5) ___ Foam, jelly, cream
 (6) ___ Withdrawal
 (7) ___ Tubes tied
 (8) ___ Rhythm

(9) ___ Other (specify)

(10) ___ None

- 43) Where is your usual source of services for female health concerns, such as family planning, annual exams, breast exams, tests for sexually transmitted diseases and other female health concerns *when you are not in jail*? 43. ___
- (1) ___ Family planning clinic
 (2) ___ Health department clinic
 (3) ___ Community health center
 (4) ___ Private gynecologist
 (5) ___ General or family physician
 (6) ___ Other (specify)
 (7) ___ None
- 44) While in jail, have you ever seen a health care provider about birth control needs? 44. ___
- (1) ___ Yes
 (0) ___ No
- 45) To your knowledge, are you now pregnant? 45. ___
- (1) ___ Yes
 (0) ___ No
- The next questions are about your use of jail health care services.*
- 46) Are you aware of the *general health* care service available in jail? 46. ___
- (1) ___ Yes
 (0) ___ No
- 47) Have you ever used the *general health* care service while in jail? 47. ___
- (1) ___ Yes
 (0) ___ No
 (2) ___ Not aware
- 48) Are you aware of the *gynecological health* care service available in jail? 48. ___
- (1) ___ Yes
 (0) ___ No
- 49) Have you ever used the *gynecological health* care service while in jail? 49. ___
- (1) ___ Yes
 (0) ___ No
 (2) ___ Not aware

50) Are you aware of the *mental health* care service available in jail?

(1) Yes

(0) No

50. __

51) Have you ever used the *mental health* care service while in jail?

(1) Yes

(0) No

(2) Not aware

51. __

52) Does the \$5 health care service fee prevent you from using the health care service?

(1) Yes

(0) No

52. __

*I am now going to ask you questions about sexual behavior.
Please remember if there are any questions you feel
uncomfortable answering, you may refuse to answer.*

53) Do you have sex mostly with

(1) Men

(2) Women

(3) Both men and women

53. __

54) During the past twelve months, with *how many people* have you had sexual intercourse?

__ (# of sex partners)

54. __

55) Was a condom used the last time you had sex?

(1) Yes

(0) No

55. __

56) Have you *ever* been tested for HIV?

(1) Yes

(0) No

56. __

57) Do you know that you *can be* tested for HIV *while in jail*?

(1) Yes

(0) No

57. __

- 58) Have you *ever* been tested for HIV *while in jail*?
(1) Yes
(0) No
(2) Not aware
- 59) Have you *ever* been tested for any other sexually transmitted disease in your life?
(1) Yes
(0) No
- 60) Do you know that you *can be* tested for sexually transmitted diseases *while in jail*?
(1) Yes
(0) No
- 61) Have you *ever* been tested for any other sexually transmitted disease *while in jail*?
(1) Yes
(0) No
(2) Not aware
- The next questions are on risk behaviors. Remember that this is a confidential study – your name is not written anywhere on this questionnaire.*
- 62) Have you ever traded sex for money?
(1) Yes
(0) No
- 63) Have you ever traded sex for drugs?
(1) Yes
(0) No
- 64) Have you ever used intravenous drugs?
(1) Yes
(0) No
- 65) Have you ever shared needles during intravenous drug use?
(1) Yes
(0) No
(2) Never used needles

Now I am going to ask you questions regarding drug and alcohol use. Your name is not written anywhere on this questionnaire. The purpose of this questionnaire is to learn more about the experiences of women in jail.

66) Did you ever use any of the following drugs at any point in your life?

- a. Alcohol (1) ___ Yes (0) ___ No
 b. Marijuana/hashish (1) ___ Yes (0) ___ No
 c. Cocaine (1) ___ Yes (0) ___ No
 d. Crack (1) ___ Yes (0) ___ No
 e. Heroin/opiates (1) ___ Yes (0) ___ No
 f. Amphetamine, methamphetamine (1) ___ Yes (0) ___ No
 g. Hallucinogen (LSD, PCP) (1) ___ Yes (0) ___ No
 h. Barbiturate (1) ___ Yes (0) ___ No
 i. Methadone (1) ___ Yes (0) ___ No

66a. ___
 66b. ___
 66c. ___
 66d. ___
 66e. ___
 66f. ___
 66g. ___
 66h. ___
 66i. ___

67) Did you use any of the following drugs during the month (30 days) before your arrest?

- a. Alcohol (1) ___ Yes (0) ___ No
 b. Marijuana/hashish (1) ___ Yes (0) ___ No
 c. Cocaine (1) ___ Yes (0) ___ No
 d. Crack (1) ___ Yes (0) ___ No
 e. Heroin/opiates (1) ___ Yes (0) ___ No
 f. Amphetamine, methamphetamine (1) ___ Yes (0) ___ No
 g. Hallucinogen (LSD, PCP) (1) ___ Yes (0) ___ No
 h. Barbiturate (1) ___ Yes (0) ___ No
 i. Methadone (1) ___ Yes (0) ___ No

67a. ___
 67b. ___
 67c. ___
 67d. ___
 67e. ___
 67f. ___
 67g. ___
 67h. ___
 67i. ___

68) How many days did you use (drug) in the month (30 days) before your arrest?

- a. Alcohol ___
 b. Marijuana/hashish ___
 c. Cocaine ___
 d. Crack ___
 e. Heroin/opiates ___
 f. Amphetamine, methamphetamine ___
 g. Hallucinogen (LSD, PCP) ___
 h. Barbiturate ___
 i. Methadone ___

68a. ___
 68b. ___
 68c. ___
 68d. ___
 68e. ___
 68f. ___
 68g. ___
 68h. ___
 68i. ___

The next questions focus on traumatic life experiences. If you have difficulty talking about something that has happened to you in the past, you can refuse to answer.

A few people have terrible experiences that most people never go through. The experiences are a threat to life, physical safety or destruction of their home. Examples are: being attacked, raped, being in a fire or flood or bad traffic accident, being threatened with a weapon, or seeing someone badly injured or killed.

- 69) Did any of the following ever happen to you? (If all "No", go to #100)
- | | | |
|-------------------------------------|---|----------|
| a. Rape | (1) ___ Yes (0) ___ No (2) ___ Yes, 2 or more times | 69a. ___ |
| b. Physical Assault | (1) ___ Yes (0) ___ No (2) ___ Yes, 2 or more times | 69b. ___ |
| c. Seeing someone hurt or killed | (1) ___ Yes (0) ___ No (2) ___ Yes, 2 or more times | 69c. ___ |
| d. Natural disaster | (1) ___ Yes (0) ___ No (2) ___ Yes, 2 or more times | 69d. ___ |
| e. Threat | (1) ___ Yes (0) ___ No (2) ___ Yes, 2 or more times | 69e. ___ |
| f. Narrow escape | (1) ___ Yes (0) ___ No (2) ___ Yes, 2 or more times | 69f. ___ |
| g. Sudden injury or accident | (1) ___ Yes (0) ___ No (2) ___ Yes, 2 or more times | 69g. ___ |
| h. News of sudden death or accident | (1) ___ Yes (0) ___ No (2) ___ Yes, 2 or more times | 69h. ___ |
- 70) If yes, did you feel intense fear, terror, or helplessness as a result of this event?
- | | | |
|-------------------------------------|------------------------------------|----------|
| a. Rape | (1) ___ Yes (0) ___ No (9) ___ N/A | 70a. ___ |
| b. Physical assault | (1) ___ Yes (0) ___ No (9) ___ N/A | 70b. ___ |
| c. Seeing someone hurt or killed | (1) ___ Yes (0) ___ No (9) ___ N/A | 70c. ___ |
| d. Natural disaster | (1) ___ Yes (0) ___ No (9) ___ N/A | 70d. ___ |
| e. Threat | (1) ___ Yes (0) ___ No (9) ___ N/A | 70e. ___ |
| f. Narrow escape | (1) ___ Yes (0) ___ No (9) ___ N/A | 70f. ___ |
| g. Sudden injury or accident | (1) ___ Yes (0) ___ No (9) ___ N/A | 70g. ___ |
| h. News of sudden death or accident | (1) ___ Yes (0) ___ No (9) ___ N/A | 70h. ___ |
- 71) If yes, how old were you the *first time* this happened?
- | | | |
|----------------------------------|-----|----------|
| a. Rape | ___ | 71a. ___ |
| b. Physical assault | ___ | 71b. ___ |
| c. Seeing someone hurt or killed | ___ | 71c. ___ |

- d. Natural disaster ---
- e. Threat ---
- f. Narrow escape ---
- g. Sudden injury or accident ---
- h. News of sudden death or accident ---

71d. ___
 71e. ___
 71f. ___
 71g. ___
 71h. ___

72) If you experienced two or more events, which was the most traumatic?
 ___ (event code)

72. ___

73) What was your age at the time of the event that was most traumatic?
 ___ (age)

73. ___

You reported that when you were ___ (age) you experienced _____
 (traumatic life event).

Below is a list of comments made by people after stressful life events. Please listen to each statement and choose the comment (not at all, rarely, sometimes, often) that was true for you for a month or more. If the comment does not fit for you for at least a month or more, choose not at all. Remember to think only of _____ (traumatic life event) when you answer each question.

	Not at all	Rarely	Sometimes	Often	
74) I thought about it when I didn't mean to.....	0	1	2	3	74. ___
75) I avoided letting myself get upset when I thought about it or was reminded of it.....	0	1	2	3	75. ___
76) I tried to remove it from memory.....	0	1	2	3	76. ___
77) I had trouble falling asleep or staying asleep, because of pictures or thoughts about it that came into my mind.....	0	1	2	3	77. ___
78) I had waves of strong feelings about it.	0	1	2	3	78. ___
79) I had dreams about it.....	0	1	2	3	79. ___

- | | | | | | |
|--|---|---|---|---|--------|
| 80) I stayed away from reminders of it..... | 0 | 1 | 2 | 3 | 80. __ |
| 81) I tried not to talk about it..... | 0 | 1 | 2 | 3 | 81. __ |
| 82) Pictures about it popped into my mind. | 0 | 1 | 2 | 3 | 82. __ |
| 83) Other things kept making me think
about it..... | 0 | 1 | 2 | 3 | 83. __ |
| 84) I was aware that I still had a lot of
feelings about it, but I didn't deal
with them..... | 0 | 1 | 2 | 3 | 84. __ |
| 85) I tried not to think about it..... | 0 | 1 | 2 | 3 | 85. __ |
| 86) Any reminder brought back feelings
about it..... | 0 | 1 | 2 | 3 | 86. __ |
| 87) My feelings about it were kind of
numb..... | 0 | 1 | 2 | 3 | 87. __ |
| 88) Think about the times some of these comments were true for you.
When was the <i>first</i> time you had any of these problems for <i>a month or more</i> ? | | | | | 88. __ |
| (1) __ Past month | | | | | |
| (2) __ Past 6 months | | | | | |
| (3) __ Past year | | | | | |
| (4) __ More than a year ago | | | | | |
| 89) How old were you the first time some of these comments were true for
you for <i>a month or more</i> ? | | | | | 89. __ |
| (1) __ (Age) | | | | | |
| 90) When was the <i>last</i> time you had some of these problems for <i>a month or more</i> ? | | | | | 90. __ |
| (1) __ Past month | | | | | |
| (2) __ Past 6 months | | | | | |
| (3) __ Past year | | | | | |
| (4) __ More than a year ago | | | | | |
| 91) How old were you the last time some of these comments were true for
you for <i>a month or more</i> ? | | | | | 91. __ |
| (1) __ (Age) | | | | | |
| 92) How much did any of the comments that were true for you ever | | | | | |

interfere with your life or activities?

- (1) ___ A lot
 (2) ___ Some
 (3) ___ A little
 (4) ___ Not at all

92. __

The next questions are on physical and sexual abuse. These topics are very personal, and as stated before, you may refuse to answer. If you report positively to child abuse/neglect or elder abuse, that information will be reported to the appropriate authorities.

93) Have you ever been hit, punched, stabbed, beaten, burned, thrown out a window or physically harmed by a sexual partner or family member?

93. __

- (1) ___ Yes
 (0) ___ No

94) Were you a child, adolescent, adult or combination of these when this happened to you?

94. __

- (1) ___ Child (<13 years)
 (2) ___ Adolescent (13-17 years)
 (3) ___ Adult (18 and older)
 (4) ___ Both child and adolescent
 (5) ___ Both child and adult
 (6) ___ Both adolescent and adult
 (7) ___ Child, adolescent, and adult
 (8) ___ Never happened

95) Have you ever been forced to engage in sexual acts (penetrated by penis or foreign object, touched in a sexual manner, forced to perform oral sex) against your will?

95. __

- (1) ___ Yes
 (0) ___ No

96) Were you a child, adolescent, adult or combination of these when this happened to you?

96. __

- (1) ___ Child (<13 years)
 (2) ___ Adolescent (13-17 years)
 (3) ___ Adult (18 and older)
 (4) ___ Both child and adolescent
 (5) ___ Both child and adult
 (6) ___ Both adolescent and adult
 (7) ___ Child, adolescent, and adult
 (8) ___ Never happened

The last questions are on homelessness, former employment, your current arrest, and if you've ever been in jail before.

- 97) Have you ever been homeless? 97. __
 (1) ___ Yes
 (0) ___ No
- 98) Were you homeless at any point during the 30 days before your arrest? 98. __
 (1) ___ Yes
 (0) ___ No
 (2) ___ Never been homeless
- 99) Were you homeless at any point during the year before your arrest? 99. __
 (1) ___ Yes
 (0) ___ No
 (2) ___ Never been homeless
- 100) Were you employed at the time of your arrest? 100. __
 (1) ___ Yes
 (0) ___ No
- 101) What were you charged with? Why are you here? 101. __
 (1) ___ Drug possession
 (2) ___ Drug sale
 (3) ___ Shoplifting
 (4) ___ Loitering
 (5) ___ Prostitution
 (6) ___ Weapons
 (7) ___ Assault
 (8) ___ Robbery
 (9) ___ Parole violation
 (10) ___ Other (specify)
- 102) Have you ever been incarcerated before? 102. __
 (1) ___ Yes
 (0) ___ No
- 103) How many times? 103. __
 --
- 104) How long have you been in custody total in the past 12 months? 104. ___
 ___ (# of days)

This is the end of the interview. Thank you for participating.

TRAUMATIC LIFE EXPERIENCES

1. A few people have terrible experiences that most people never go through. The experiences are a threat to life, physical safety or destruction of their home. Examples are: being attacked, raped, being in a fire or flood or bad traffic accident, being threatened with a weapon, or seeing someone badly injured or killed.

Did any of the following ever happen to a member of your family?

(By family we mean those people recorded on your Kinship Diagram.)

Family Experience

NO	YES ONCE	YES, to 2 or MORE FAMILY MEMBERS		
0	1	2	a. (01) Military Combat	1. a. ___
0	1	2	b. (02) Rape	b. ___
0	1	2	c. (03) Physical Assault	c. ___
0	1	2	d. (04) Seeing Someone Hurt or Killed	d. ___
0	1	2	e. (05) Natural Disaster	e. ___
0	1	2	f. (06) Threat	f. ___
0	1	2	g. (07) Narrow Escape	g. ___
0	1	2	h. (08) Sudden Injury or Accident	h. ___
0	1	2	i. (09) News of Sudden Death or Accident	i. ___

2. A few people have terrible experiences that most people never go through. The experiences are a threat to life, physical safety or destruction of their home. Examples are: being attacked, raped, being in a fire or flood or bad traffic accident, being threatened with a weapon, or seeing someone badly injured or killed.

(IV: IF NO to any item in 2a - 2i, code "terror" "7" and "age" "97".)

Did any of the following ever happen to you?

<u>Personal Experience</u>			IF YES, did you feel intense fear, terror, or helplessness as a result of this event?	How old were you the <u>first</u> time this happened?				
NO	YES ONCE	YES, 2 or MORE TIMES	NO	YES	N/A	AGE		
0	1	2	a. (01) Military Combat	0	1	7	____	2. a. ____ a1. ____ a2. ____
0	1	2	b. (02) Rape	0	1	7	____	b. ____ b1. ____ b2. ____
0	1	2	c. (03) Physical Assault	0	1	7	____	c. ____ c1. ____ c2. ____
0	1	2	d. (04) Seeing Someone Hurt or Killed	0	1	7	____	d. ____ d1. ____ d2. ____
0	1	2	e. (05) Natural Disaster	0	1	7	____	e. ____ e1. ____ e2. ____
0	1	2	f. (06) Threat	0	1	7	____	f. ____ f1. ____ f2. ____
0	1	2	g. (07) Narrow Escape	0	1	7	____	g. ____ g1. ____ g2. ____
0	1	2	h. (08) Sudden Injury or Accident	0	1	7	____	h. ____ h1. ____ h2. ____
0	1	2	i. (09) News of Sudden Death or Accident	0	1	7	____	i. ____ i1. ____ i2. ____

INTERVIEWER: If any qualifying traumatic event, please ask the subject to identify which (if two or more are reported) they think was the most traumatic. Code most traumatic here, along with their age at the time of the event they choose. Remember that some people may have experienced a type of event more than once. For the symptoms report on the IES Scale, we need age at the time of the event for which they report symptoms. Write the experience and age on the **Impact of Events Scale** and administer it.

IF no events, or if the only event occurred less than a month ago, skip the IES and go on to the next instrument. Code "j" and "k" "97" below.

j. If two or more events: Which was the most traumatic?

j. ____
(Event code)

k. AGE at the time of the event that was most traumatic?

k. ____
(Age)

REVISED IMPACT OF EVENTS SCALE*
(American Indian Research Version)

SUBNUM

IV DATE
MM/DD/YY

IV CODE

Age

Event

You reported that when you were _____ you experienced _____
(Age) (Traumatic Life Event)

Below is a list of comments made by people after stressful life events. Please read and answer each item. Circle how frequently the comment was true for you for a MONTH OR MORE. If the comment does not fit for you for at least a MONTH OR MORE, please circle "Not at All".

Remember to think only of _____ when you answer each question.
(Event)

		FREQUENCY			
		Not at All (0)	Rarely (1)	Sometimes (3)	Often (5)
1	I thought about it when I didn't mean to.	0	1	3	5
2	I avoided letting myself get upset when I thought about it or was reminded of it.	0	1	3	5
3	I tried to remove it from memory.	0	1	3	5
4	I had trouble falling asleep or staying asleep, because of pictures or thoughts about it that came into my mind.	0	1	3	5
5	I had waves of strong feelings about it.	0	1	3	5
6	I had dreams about it.	0	1	3	5
7	I stayed away from reminders of it.	0	1	3	5
8	I felt as if it hadn't happened or it wasn't real.	0	1	3	5
9	I tried not to talk about it.	0	1	3	5
10	Pictures about it popped into my mind.	0	1	3	5
11	Other things kept making me think about it.	0	1	3	5
12	I was aware that I still had a lot of feelings about it, but I didn't deal with them.	0	1	3	5
13	I tried not to think about it.	0	1	3	5
14	Any reminder brought back feelings about it.	0	1	3	5
15	My feelings about it were kind of numb.	0	1	3	5

*Horowitz, M.: School of Medicine, University of California, San Francisco.

OVER

Impact of events:

16. Think about the times some of these comments were true for you. When was the first time you had any of these problems for a month or more? 16. ___
- (1) ___ Past month
 - (2) ___ Past 6 months
 - (3) ___ Past year
 - (4) ___ More than a year ago
17. How old were you the first time some of these comments were true for you for a month or more? ___ ___ 17. ___ ___
- (Age)
18. When was the last time you had some of these problems for a month or more? 18. ___
- (1) ___ Past month
 - (2) ___ Past 6 months
 - (3) ___ Past year
 - (4) ___ More than a year ago
19. How old were you the last time some of these comments were true for you for a month or more? ___ ___ 19. ___ ___
- (Age)
20. How much did any of the comments that were true for you ever interfere with your life or activities? 20. ___
- (1) ___ A lot
 - (2) ___ Some
 - (3) ___ A little
 - (4) ___ Not at all

SURVEY A
1998 Behavioral Risk Factor Surveillance System Questionnaire
Final Draft
MARCH 1998

CORE SECTIONS

Section 1: Health Status
Section 2: Health Care Access
Section 3: Diabetes
Section 4: Exercise
Section 5: Tobacco Use
SM1.. State Added Tobacco and Cigar use
Section 6: Fruits and Vegetable
Section 7: Weight Control
Section 8: Demographics
SM2.. state added zipcode and employment size
Section 9: Women's Health
Section 10: HIV/AIDS

OPTIONAL MODULES

SM3.. State Added Sexual Behavior includes high risk behaviors
Mod_3 CDC Optional Family Planning Module
SM4.. State Added Family Planning for Women
SM5.. State Added Family Planning for Men
SM6.. State Added Rabies Exposure
SM7.. State Added Disability from which some Quality of Life questions are imbedded.
SM8.. State Added Second Hand Smoke
SM9.. State Added Smokeless
SM10.. State Added Pipes
SM11.. Health Care Utilization
Among Disabled only
SM12.. Health Care Utilization..... Among Disabled only
SM13.. Preventive Counseling ServicesAmong Disabled only
SM14: Social ContextAmong Disabled only
SM15.. State Added Diabetes
SM16.. State Added Influenza
SM17.. IRB follow-up Module

HELLO, I'm _____ calling for **DR Grant Higginson of the Oregon Health Division** We're doing a study of the health practices of **Oregon** residents. Your phone number has been chosen randomly by the **Health Division** to be included in the study, and we'd like to ask some questions about things people do which may affect their health.

Is this _____ ? **No** Thank you very much, but I seem to have dialed the wrong number, It's possible that your number may be called at a later time. **Stop**

Is this a private residence? **No** Thank you very much, but we are only interviewing private residences. **Stop**

Our study requires that we randomly select one adult who lives in your household to be interviewed. How many members of your household, including yourself, are 18 years of age or older?

If "1" Are you the adult?

If "yes" Then you are the person I need to speak with. **Go to page 3**

If "no" May I speak with him or her? **Go to "correct respondent" at bottom of page**

How many of these adults are men and how many are women?

Who is the oldest man who presently lives in this household?
Who is the next oldest man who presently lives in this household?
Etc.

Who is the oldest woman who presently lives in this household?
Who is the next oldest woman who presently lives in this household?
Etc.

The person in your household that I need to speak with is _____.

If "you," go to page 3

To correct respondent Hello, I'm _____ calling for the _____. I'm a member of a special research team. We're doing a study of _____ residents regarding their health practices and day-to-day living habits. You have been randomly chosen to be included in the study from among the adult members of your household.

IDENTIFICATION INFORMATION	1-30
Fips state code	1-2
Geographic stratum code	3-4
Household density stratum	5
PSU Number	6-10
Record Number	11
Date of Interview	12-17
Month of Interview	12-13
Day of Interview	14-15
Year of Interview	16-17
Interviewer Identification	18-19
Telephone Number	20-27
Area Code	20-22
Prefix	23-25
Suffix, First Two Digits (SUFFIX)	26-27
Final Disposition of Telephone Call (DISPCODE)	28-29
Wind down	30
Number of Adults in Household	31-32
Number of Adult Men in Household	33
Number of Women in Household	34

Don't read unless person asks how long survey will take: The survey will take at least 10 minutes, but may be longer based on your answers. I'll read as quickly as I can. All the information obtained in this study will be confidential.

Section 1: Health Status

	1.	Would you say that in general your health is:	(35)
		Please Read	
	a.	Excellent	1
	b.	Very good	2
	c.	Good	3
	d.	Fair	4
		or	
	e.	Poor	5
		Don't know/Not Sure	7
		Refused	9
Do not read these responses			
	2.	Now thinking about your physical health, which includes physical illness and injury, for how many days during the past 30 days was your physical health not good?	(36-37)
	a.	Number of days	--
	b.	None	8 8
		Don't know/Not sure	7 7
		Refused	9 9
	3.	Now thinking about your mental health, which includes stress, depression, and problems with emotions, for how many days during the past 30 days was your mental health not good?	(38-39)
	a.	Number of days	--
	b.	None	8 8
		Don't know/Not sure	7 7
		Refused	9 9
		If Q2 also "None," go to Q5	
	4.	During the past 30 days, for about how many days did poor physical or mental health keep you from doing your usual activities, such as self-care, work, or recreation?	(40-41)
	a.	Number of days	--
	b.	None	8 8
		Don't know/Not sure	7 7
		Refused	9 9

Section 2: Health Care Access

5. Do you have any kind of health care coverage, including health insurance, prepaid plans such as HMOs, or government plans such as Medicare? (42)
- | | | | |
|----|---------------------|-----------|---|
| a. | Yes | | 1 |
| b. | No | Go to Q7a | 2 |
| | Don't know/Not sure | Go to Q10 | 7 |
| | Refused | Go to Q10 | 9 |
6. Medicare is a coverage plan for people 65 or over and for certain disabled people. Do you have Medicare? (43)
- | | | | |
|----|---------------------|----------|---|
| a. | Yes | Go to Q8 | 1 |
| b. | No | | 2 |
| | Don't know/not sure | | 7 |
| | Refused | | 9 |
7. What type of health care coverage do you use to pay for most of your medical care? (44-45)
- Is it coverage through: Coverage Code

Please Read

- | | | | | |
|------------------------------------|----|---|-----------|-----|
| | a. | Your employer | Go to Q8 | 0 1 |
| | b. | Someone else's employer | Go to Q8 | 0 2 |
| | c. | A plan that you or someone else buys on your own | Go to Q8 | 0 3 |
| | d. | Medicare | Go to Q10 | 0 4 |
| | e. | Medicaid or Medical Assistance [or substitute state program name] | Go to Q8 | 0 5 |
| | f. | The military, CHAMPUS, TriCare, or the VA [or CHAMP-VA] | Go to Q8 | 0 6 |
| | g. | The Indian Health Service [or the Alaska Native Health Service] | Go to Q8 | 0 7 |
| | h. | Some other source | Go to Q8 | 0 8 |
| | | None | Go to Q9 | 8 8 |
| Do not read these responses | | Don't know/Not sure | Go to Q8 | 7 7 |
| | | Refused | Go to Q8 | 9 9 |

- 7a. There are some types of coverage you may not have considered. Please tell me if you have any of the following: (46-47)

- | | Coverage through: | Coverage Code | |
|--|---------------------|---|------------------|
| | Please Read | | --- |
| If more than one, ask "Which type of your do you use to pay for most medical care?" | a. | Your employer | 0 1 |
| | b. | Someone else's employer | 0 2 |
| | c. | A plan that you or someone else buys on your own | 0 3 |
| | d. | Medicare | Go to Q10
0 4 |
| | e. | Medicaid or Oregon Health Plan | 0 5 |
| | f. | The military, CHAMPUS, Tricare, or the VA [or CHAMP-VA] | 0 6 |
| | g. | The Indian Health Service or | 0 7 |
| | h. | Some other source | 0 8 |
| | None | Go to Q9 | 8 8 |
| | Don't know/Not sure | Go to Q10 | 7 7 |
| | Refused | Go to Q10 | 9 9 |

Only get this question if respondent has health insurance that is not medicare, Q5=1, Q6 >1, and Q7 is not equal to 04, 88,

or 99 or Q7a is not equal to 04, 77, 88 or 99.

8. During the past 12 months, was there any time that you did not have any health insurance or coverage? (48)
- | | | | |
|----|---------------------|-----------|---|
| a. | Yes | Go to Q10 | 1 |
| b. | No | Go to Q10 | 2 |
| | Don't know/Not sure | Go to Q10 | 7 |
| | Refused | Go to Q10 | 9 |

9. About how long has it been since you had health care coverage? (49)
- Read Only if Necessary**

- | | | | |
|---|----|--|---|
| 1 | a. | Within the past 6 months (1 to 6 months ago) | |
| | b. | Within the past year (6 to 12 months ago) | 2 |
| | c. | Within the past 2 years (1 to 2 years ago) | 3 |
| | d. | Within the past 5 years (2 to 5 years ago) | 4 |
| | e. | 5 or more years ago | 5 |
| | | Don't know/Not sure | 7 |
| | | Never | 8 |
| | | Refused | 9 |

10. Was there a time during the last 12 months when you needed to see a doctor, but could not because of the cost? (50)
- | | | |
|----|---------------------|---|
| a. | Yes | 1 |
| b. | No | 2 |
| | Don't know/Not sure | 7 |
| | Refused | 9 |

11. About how long has it been since you last visited a doctor for a routine checkup? (51)

Read Only if Necessary

- | | | | |
|---|---------|--|---|
| A routine checkup is a general physical exam, not an exam for a specific injury, illness, or condition | a. | Within the past year (1 to 12 months ago) | 1 |
| | b. | Within the past 2 years (1 to 2 years ago) | 2 |
| | c. | Within the past 5 years (2 to 5 years ago) | 3 |
| | d. | 5 or more years ago | 4 |
| | | Don't know/Not sure | 7 |
| | Never | 8 | |
| | Refused | 9 | |

Section 3: Diabetes

12. Have you ever been told by a doctor that you have diabetes? (52)
- | | | | | |
|---|----|--|--------------------|---|
| If "Yes" and female, ask "Was this only when you were pregnant?" | a. | Yes | | 1 |
| | b. | Yes, but female told only during pregnancy | | 2 |
| | c. | No | Skip to Q13 | 3 |
| | | Don't know/Not sure | Skip to Q13 | 7 |
| | | Refused | Skip to Q13 | 9 |

Section 4: Exercise

The next few questions are about exercise, recreation, or physical activities other than your regular job duties.

13. During the past month, did you participate in any physical activities or exercises such as running, calisthenics, golf, gardening, or walking for exercise? (53)
- | | | | |
|----|---------------------|------------------|---|
| a. | Yes | | 1 |
| b. | No | Go to Q23 | 2 |
| | Don't know/Not sure | Go to Q23 | 7 |
| | Refused | Go to Q23 | 9 |

Only get this question if Q13 = 1 (yes).

14. What type of physical activity or exercise did you spend the most time doing during the past month? (54-55)
- Activity (specify): _____
- See coding list A**
- | | | |
|---------|------------------|-----|
| Refused | Go to Q18 | 9 9 |
|---------|------------------|-----|

Ask Q15 only if answer to Q14 is running, jogging, walking, or swimming. All others, go to Q16.

15. How far did you usually walk/run/jog/swim? (56-58)
- | | | |
|---|---------------------|-------|
| See coding list B if response is not in miles and tenths | Miles and tenths | _____ |
| | Don't know/Not sure | 7 7 7 |
| | Refused | 9 9 9 |

Ask Q16 only if Q13 = 1 (yes).

16. How many times per week or per month did you take part in this activity during the past month? (59-61)
- | | | |
|----|---------------------|---------|
| a. | Times per week | 1 _____ |
| b. | Times per month | 2 _____ |
| | Don't know/Not sure | 7 7 7 |
| | Refused | 9 9 9 |

Ask Q17 only if Q13 = 1 (yes).

17. And when you took part in this activity, for how many minutes or hours did you usually keep at it? (62-64)

Hours and minutes		
Don't know/Not sure		$\overline{7} \overline{7} \overline{7}$
Refused		9 9 9

Ask Q18 only if Q13 = 1 (yes).

18. Was there another physical activity or exercise that you participated in during the last month? (65)

a. Yes		1
b. No	Go to Q23	2
Don't know/Not sure	Go to Q23	7
Refused	Go to Q23	9

Ask Q19 only if Q18 = 1 (yes).

19. What other type of physical activity gave you the next most exercise during the past month? (66-67)

Activity (specify): _____		— —
	See coding list A	
Refused	Go to Q23	9 9

Ask Q20 only if answer to Q19 is running, jogging, walking, or swimming. All others go to Q21

20. How far did you usually walk/run/jog/swim? (68-70)

See coding
list B if
response is
not in
miles and
tenths

Miles and tenths		— —
Don't know/Not sure		7 7 7
Refused		9 9 9

Ask Q21 only if Q18 = 1 (yes).

21. How many times per week or per month did you take part in this activity? (71-73)

a. Times per week		1 — —
b. Times per month		2 — —
Don't know/Not sure		$\overline{7} \overline{7} \overline{7}$
Refused		9 9 9

Ask Q22 only if Q13 = 1 (yes) and Q18 = 1 (yes).

22. And when you took part in this activity, for how many minutes or hours did you usually keep at it? (74-76)

Hours and minutes		
Don't know/Not sure		$\overline{7} \overline{7} \overline{7}$
Refused		9 9 9

Section 5: Tobacco Use

23. Have you smoked at least 100 cigarettes in your entire life? (77)
- 5 packs = 100 cigarettes**
- | | | | |
|----|---------------------|-------------|---|
| a. | Yes | | 1 |
| b. | No | Go to SM1_1 | 2 |
| | Don't know/Not sure | Go to SM1_1 | 7 |
| | Refused | Go to SM1_1 | 9 |
- Ask Q24 only if Q23 = 1 (yes).
24. Do you now smoke cigarettes everyday, some days, or not at all? (78)
- | | | | |
|----|------------|-------------|---|
| a. | Everyday | | 1 |
| b. | Some days | Go to Q25a | 2 |
| c. | Not at all | Go to Q27 | 3 |
| | Refused | Go to SM1_1 | 9 |
- Ask Q25 if Q23 = 1 (yes) and Q24 = 1 (everyday).
25. On the average, about how many cigarettes a day do you now smoke? (79-80)
- 1 pack = 20 cigarettes**
- | | | | |
|--|--|----------------|-----|
| | Number of cigarettes [76 = 76 or more] | Skip to SM 1_8 | -- |
| | Don't know/Not sure | Skip to SM 1_8 | 7 7 |
| | Refused | Skip to SM 1_8 | 9 9 |
- Ask Q25a if Q23 = 1 (yes) and Q24 = 2 (some days).
- 25a. On the average, when you smoked during the past 30 days, about how many cigarettes did you smoke a day? (81-82)
- 1 pack = 20 cigarettes**
- | | | | |
|--|--|-----------|-----|
| | Number of cigarettes [76 = 76 or more] | Go to Q28 | |
| | Don't know/Not sure | Go to Q28 | 7 7 |
| | Refused | Go to Q28 | 9 9 |
- Ask Q26 if Q23 = 1 (yes) and Q24 = 1 (everyday).
26. During the past 12 months, have you quit smoking for 1 day or longer? (83)
- | | | | |
|----|---------------------|-------------|---|
| a. | Yes | Go to SM1_1 | 1 |
| b. | No | Go to SM1_1 | 2 |
| | Don't know/Not sure | Go to SM1_1 | 7 |
| | Refused | Go to SM1_1 | 9 |
- Ask Q27 if Q23 = 1 (yes) and Q24 = 3 (not at all).

27. About how long has it been since you last smoked cigarettes regularly, that is, daily? (84-85)
Time code _____

Read Only if Necessary

a. Within the past month (0 to 1 month ago)	0 1
b. Within the past 3 months (1 to 3 months ago)	0 2
c. Within the past 6 months (3 to 6 months ago)	0 3
d. Within the past year (6 to 12 months ago)	0 4
e. Within the past 5 years (1 to 5 years ago)	0 5
f. Within the past 15 years (5 to 15 years ago)	0 6
g. 15 or more years ago	0 7
Don't know/Not sure	7 7
Never smoked regularly	8 8
Refused	9 9

SM1_1 At your last visit to your health care provider, did someone ask you if you smoked, either by questionnaire or in person? (Asked of all) (371)

a. Yes	1
b. No	2
Don't know/Not sure	7
Refused	9

If q23 = 2, 7, or 9 then go to 28.

If Q24 = 3 then go to SM1_9.

SM1_2 At your last visit to your health care provider, were you advised to quit smoking? (372)

a. Yes	Go to SM1_4	1
b. No		2
Don't know/Not sure		7
Refused		9

SM1_3 Has a doctor or other health professional ever advised you to quit smoking? (373)

a. Yes		1
b. No	Skip to SM1_5	2
Don't know/Not sure	Skip to SM1_5	7
Refused		9

Ask SM1_4 only if SM1_3 =1.

SM1_4. When was the last time a health care professional advised you to quit smoking? (374)
READ 1-3 IF NECESSARY.

Within the past year (1-12 months)	1
Within the past 3 years (1 to 3 years)	2
3 or more years ago	3
Don't know/Not sure	7
Refused	9

SM1_5 At your last visit to your health care provider, were you offered recommendations or assistance on how to quit smoking? (375)

a. Yes	1
b. No	2
Don't know/Not sure	7
Refused	9

SM1_6	Are you seriously considering stopping smoking within the next 6 months?	(376)
	a. Yes	1
	b. No	2
	Don't know/Not sure	7
	Refused	9
SM1_7.	Are you planning to stop within the next 30 days?	(377)
	a. Yes	1
	b. No	2
	Don't know/Not sure	7
	Refused	9
Skip to SM1_9 if Q5 = 2,7,9 and Q7a = 88: or Q5 = 1 and Q7a = 88		
SM1_8.	Does your health insurance coverage pay for the cost of any smoking cessation assistance such as nicotine replacement or a smoking cessation program? Would you say yes, no, or don't know? NOTE: HEALTH INSURANCE COVERAGE INCLUDES HEALTH INSURANCE OR GOVERNMENT PLANS SUCH AS MEDICAID, THE OREGON HEALTH PLAN, OR MEDICARE.	(379)
	a. Yes	1
	b. No	2
	Don't know/Not sure	7
	Refused	9
SKIP : all smokers at this point now skip to Q28.		
SM1_9.	Thinking of when you successfully quit smoking, please tell me the single most important reason you had for quitting. DO NOT READ RESPONSES.	(380-381)
	Concern about my health at the time	11
	Concern about my future health	12
	Concern for the health of those around me (secondhand smoke)	13
	Cost of cigarettes	14
	Doctor advised me to quit	15
	It isn't the thing to do anymore	16
	Laws restricting smoking	17
	Pregnancy	18
	Pressure from family and friends	19
	Workplace smoking policy	20
	Other, specify _____ 60 characters in open-ended file	87
	Don't know/Not sure	77
	Refused	99
28.	Have you ever smoked a cigar, even just a few puffs? cigar =large cigar cigarillo, or small cigar	(86)
	a. Yes	1
	b. No	2
	Don't know/Not sure	7
	Refused	9
	Go to Next Section	
	Go to Next Section	
	Go to Next Section	

29.	When was the last time you smoked a cigar? Time code	(87-88)
	Read Only if Necessary	
	a. Within the past month (0 to 1 month ago)	0 1
	b. Within the past 3 months (1 to 3 months ago)	Go to Next Section 0 2
	c. Within the past 6 months (3 to 6 months ago)	Go to Next Section 0 3
	d. Within the past year (6 to 12 months ago)	Go to Next Section 0 4
	e. Within the past 5 years (1-5 years ago)	Go to Next Section 0 5
	f. Within the past 15 years (5-15 years ago)	Go to Next Section 0 6
	g. 15 or more years ago	Go to Next Section 0 7
	Don't know/not sure	Go to Next Section 7 7
	Refused	Go to Next Section 9 9
30.	In the past month, did you smoke cigars: Please Read	(89)
	a. Everyday	1
	b. Several times per week	2
	c. Once per week	3
	or	
	d. Less than once per week	4
	Don't know/Not sure	7
	Refused	9
Do not read these responses		
SM1_11.	Are you seriously considering stopping smoking cigars within the next 6 months?	(382)
	Yes	1
	No	skip to next section 2
	Don't know/Not sure	skip to next section 7
	Refused	skip to next section 9
SM1_12.	Are you planning to stop within the next 30 days?	(383)
	Yes	1
	No	2
	Don't know/Not sure	7
	Refused	9

Section 6: Fruits and Vegetables

These next questions are about the foods you usually eat or drink. Please tell me how often you eat or drink each one, for example, twice a week, three times a month, and so forth. Remember, I am only interested in the foods you eat. Include all foods you eat, both at home and away from home.

- | | | |
|-----|--|-----------|
| 31. | How often do you drink fruit juices such as orange, grapefruit, or tomato? | (90-92) |
| | a. Per day | 1 -- |
| | b. Per week | 2 -- |
| | c. Per month | 3 -- |
| | d. Per year | 4 -- |
| | e. Never | 5 5 5 |
| | Don't know/Not sure | 7 7 7 |
| | Refused | 9 9 9 |
| 32. | Not counting juice, how often do you eat fruit? | (93-95) |
| | a. Per day | 1 -- |
| | b. Per week | 2 -- |
| | c. Per month | 3 -- |
| | d. Per year | 4 -- |
| | e. Never | 5 5 5 |
| | Don't know/Not sure | 7 7 7 |
| | Refused | 9 9 9 |
| 33. | How often do you eat green salad? | (96-98) |
| | a. Per day | 1 -- |
| | b. Per week | 2 -- |
| | c. Per month | 3 -- |
| | d. Per year | 4 -- |
| | e. Never | 5 5 5 |
| | Don't know/Not sure | 7 7 7 |
| | Refused | 9 9 9 |
| 34. | How often do you eat potatoes not including french fries, fried potatoes, or potato chips? | (99-101) |
| | a. Per day | 1 -- |
| | b. Per week | 2 -- |
| | c. Per month | 3 -- |
| | d. Per year | 4 -- |
| | e. Never | 5 5 5 |
| | Don't know/Not sure | 7 7 7 |
| | Refused | 9 9 9 |
| 35. | How often do you eat carrots? | (102-104) |
| | a. Per day | 1 -- |
| | b. Per week | 2 -- |
| | c. Per month | 3 -- |
| | d. Per year | 4 -- |
| | e. Never | 5 5 5 |
| | Don't know/Not sure | 7 7 7 |
| | Refused | 9 9 9 |

36. Not counting carrots, potatoes, or salad, how many servings of vegetables do you usually eat? (105-107)

Example:
A serving of
vegetables at
both lunch
and dinner
would be two
servings

- | | | | |
|---------------------|---|---|---|
| a. Per day | 1 | - | - |
| b. Per week | 2 | - | - |
| c. Per month | 3 | - | - |
| d. Per year | 4 | - | - |
| e. Never | 5 | 5 | 5 |
| Don't know/Not sure | 7 | 7 | 7 |
| Refused | 9 | 9 | 9 |

Section 7: Weight Control

	37.	Are you now trying to lose weight?		(108)
		a. Yes	Go to Q39	1
		b. No		2
		Don't know/Not sure		7
		Refused		9
		Ask Q38 only if Q37 = 2, 7 or 9.		
	38.	Are you now trying to maintain your current weight, that is to keep from gaining weight?		(109)
		a. Yes		1
		b. No	Go to Q41	2
		Don't know/Not sure	Go to Q41	7
		Refused	Go to Q41	9
		Ask Q39 only if Q37 = 1 (trying to lose weight) or Q38 = 1 (trying to maintain current weight).		
	39.	Are you eating either fewer calories or less fat to...		
		lose weight? [if "Yes" on Q37]		
		keep from gaining weight? [if "Yes" on Q38]		(110)
Probe for which		a. Yes, fewer calories		1
		b. Yes, less fat		2
		c. Yes, fewer calories and less fat		3
		d. No		4
		Don't know/Not sure		7
		Refused		9
		Ask Q40 only if Q37 = 1 (trying to lose weight) or Q38 = 1 (trying to maintain current weight).		
	40.	Are you using physical activity or exercise to...		
		lose weight? [if "Yes" on Q37]		
		keep from gaining weight? [if "Yes" on Q38]		(111)
		a. Yes		1
		b. No		2
		Don't know/Not sure		7
		Refused		9
	41.	In the past 12 months, has a doctor, nurse, or other health professional given you advice about your weight?		(112)
Probe for which		a. Yes, lose weight		1
		b. Yes, gain weight		2
		c. Yes, maintain current weight		3
		d. No		4
		Don't know/Not sure		7
		Refused		9

42. In the past two years, have you taken any weight loss pills prescribed by a doctor? Do not include water pills or thyroid medications. (113)

Include only pills taken for the primary purpose of losing weight Probe for which:

- | | | |
|--|------------------|---|
| a. Yes, I am currently taking them | | 1 |
| b. Yes, I have taken them but I am not currently taking them | | 2 |
| c. No, I have not taken them | Go to Q44 | 3 |
| Don't know/Not sure | Go to Q44 | 7 |
| Refused | Go to Q44 | 9 |

Ask Q43 only if Q42 = 1 or 2 (are currently taking or have taken diet pills).

43. How much did you weigh just before you started taking prescription weight loss pills for the first time? (114-116)

Round fractions up

- | | | |
|---------------------|--|-------|
| Weight in pounds | | --- |
| Don't know/Not sure | | 7 7 7 |
| Refused | | 9 9 9 |

Section 8: Demographics

44.	What is your age?	(117-118)
	Code age in years	--
	Don't know/Not sure	0 7
	Refused	0 9
45.	What is your race?	(119)
	Would you say: Please Read	
	a. White	1
	b. Black	2
	c. Asian, Pacific Islander	3
	d. American Indian, Alaska Native	4
	or	
	e. Other: (specify) _____	5
	Don't know/Not sure	7
	Refused	9
Do not read these responses		
46.	Are you of Spanish or Hispanic origin?	(120)
	a. Yes	1
	b. No	2
	Don't know/Not sure	7
	Refused	9
47.	Are you:	(121)
	Please Read	
	a. Married	1
	b. Divorced	2
	c. Widowed	3
	d. Separated	4
	e. Never been married	5
	or	
	f. A member of an unmarried couple	6
	Refused	9
48.	How many children live in your household who are...	
	Please Read	
Code 1-9	a. less than 5 years old?	— (122)
7 = 7 or more	b. 5 through 12 years old?	— (123)
8 = None	c. 13 through 17 years old?	— (124)
9 = Refused		

49. What is the highest grade or year of school you completed? (125)

Read Only if Necessary

- | | |
|---|---|
| a. Never attended school or only kindergarten | 1 |
| b. Grades 1 through 8 (Elementary) | 2 |
| c. Grades 9 through 11 (Some high school) | 3 |
| d. Grade 12 or GED (High school graduate) | 4 |
| e. College 1 year to 3 years (Some college or technical school) | 5 |
| f. College 4 years or more (College graduate) | 6 |
| Refused | 9 |

50. Are you currently: (126)

Please Read

- | | |
|-------------------------------------|---|
| a. Employed for wages | 1 |
| b. Self-employed | 2 |
| c. Out of work for more than 1 year | 3 |
| d. Out of work for less than 1 year | 4 |
| e. Homemaker | 5 |
| f. Student | 6 |
| g. Retired | 7 |
| or | |
| h. Unable to work | 8 |
| Refused | 9 |

51. Is your annual household income from all sources: (127-128)

Read as Appropriate

- | | | |
|---|---|-----|
| If respondent refuses at any income level, code refused | a. Less than \$25,000 If "no," ask ; if "yes," ask b (\$20,000 to less than \$25,000) | 0 4 |
| | b. Less than \$20,000 If "no," code a; if "yes," ask c (\$15,000 to less than \$20,000) | 0 3 |
| | c. Less than \$15,000 If "no," code b; if "yes," ask d (\$10,000 to less than \$15,000) | 0 2 |
| | d. Less than \$10,000 If "no," code c | 0 1 |
| | e. Less than \$35,000 If "no," ask f (\$25,000 to less than \$35,000) | 0 5 |
| | f. Less than \$50,000 If "no," ask g (\$35,000 to less than \$50,000) | 0 6 |
| | g. Less than \$75,000 If "no," code h (\$50,000 to \$75,000) | 0 7 |
| | h. \$75,000 or more | 0 8 |
| Do not read these responses | Don't know/Not sure | 7 7 |
| | Refused | 9 9 |

52. About how much do you weigh without shoes? (129-131)

Round fractions up	Pounds Don't know/Not sure Refused	--- 7 7 7 9 9 9
53.	How much would you like to weigh? Pounds Don't know/Not sure Refused	(132-134) --- 7 7 7 9 9 9
54.	About how tall are you without shoes? Round fractions down Height Don't know/Not sure Refused	(135-137) --- 7 7 7 9 9 9
55.	What county do you live in? FIPS county code Don't know/not sure Refused	(138-140) --- 7 7 7 9 9 9
56.	Do you have more than one telephone number in your household? a. Yes b. No Refused	(141) 1 2 9
	Ask Q57 if Q56 = 1 (yes).	
57.	How many residential telephone numbers do you have? Exclude dedicated fax and computer lines Total telephone numbers [8 = 8 or more] Refused	(142) --- 9
SM2-1.	What is your zip code? IF NEEDED: I mean the zip code of where you live? Don't know/Refused	(384-388) 9 --- 99999
	If Q50 Employment 1 or 2 ask or else Go to 58 Ask QSM2_2 if Q50 = 1 or 2.	

SM2_2	How many people are employed at your place of work?	(389-391)
	Less than 5 employees	1
	Between 5 and 9 employees	2
	Between 10 and 19 employees	3
	Between 20 and 99 employees	4
	100 or more employees	5
	Don't know/Not sure	7
	Refused	9
58.	Indicate sex of respondent. Ask Only if Necessary	(143)
	Male Go to Section 10: HIV/AIDS	1
	Female	2

Now I have some questions about other health services you may have received.

Section 9: Women's Health

Ask Q59 only if Q58 = 1 (female).

59. A mammogram is an x-ray of each breast to look for breast cancer. Have you ever had a mammogram? (144)
- | | | |
|---------------------|-----------|---|
| a. Yes | | 1 |
| b. No | Go to Q62 | 2 |
| Don't know/Not sure | Go to Q62 | 7 |
| Refused | Go to Q62 | 9 |

Ask Q60 if Q58 = 1 (female) and Q59 = 1 (yes).

60. How long has it been since you had your last mammogram? (145)
Read only if Necessary
- | | | |
|---|--|---|
| a. Within the past year (1 to 12 months ago) | | 1 |
| b. Within the past 2 years (1 to 2 years ago) | | 2 |
| c. Within the past 3 years (2 to 3 years ago) | | 3 |
| d. Within the past 5 years (3 to 5 years ago) | | 4 |
| e. 5 or more years ago | | 5 |
| Don't know/Not sure | | 7 |
| Refused | | 9 |

Ask Q61 if Q58 = 1 (female) and Q59 = 1 (yes).

61. Was your last mammogram done as part of a routine checkup, because of a breast problem other than cancer, or because you've already had breast cancer? (146)
- | | | |
|-------------------------------------|--|---|
| a. Routine checkup | | 1 |
| b. Breast problem other than cancer | | 2 |
| c. Had breast cancer | | 3 |
| Don't know/Not sure | | 7 |
| Refused | | 9 |

Ask Q62 if Q58 = 1 (female).

62. A clinical breast exam is when a doctor, nurse, or other health professional feels the breast for lumps. Have you ever had a clinical breast exam? (147)
- | | | |
|---------------------|-----------|---|
| a. Yes | | 1 |
| b. No | Go to Q65 | 2 |
| Don't know/Not sure | Go to Q65 | 7 |
| Refused | Go to Q65 | 9 |

Ask Q63 if Q58 = 1 (female) and Q62 = 1 (yes).

63. How long has it been since your last breast exam? (148)
Read Only if Necessary
- a. Within the past year (1 to 12 months ago) 1
 - b. Within the past 2 years (1 to 2 years ago) 2
 - c. Within the past 3 years (2 to 3 years ago) 3
 - d. Within the past 5 years (3 to 5 years ago) 4
 - e. 5 or more years ago 5
 - Don't know/Not sure 7
 - Refused 9
- Ask Q64 if Q58 = 1 (female) and Q62 = 1 (yes).
64. Was your last breast exam done as part of a routine checkup, because of a breast problem other than cancer, or because you've already had breast cancer? (149)
- a. Routine Checkup 1
 - b. Breast problem other than cancer 2
 - c. Had breast cancer 3
 - Don't know/Not sure 7
 - Refused 9
- Ask Q65 if Q58 = 1 (female).
65. A Pap smear is a test for cancer of the cervix. Have you ever had a Pap smear? (150)
- a. Yes 1
 - b. No **Go to Q68** 2
 - Don't know/Not sure **Go to Q68** 7
 - Refused **Go to Q68** 9
- Ask Q66 only if Q58 = 1 (female) and Q65 = 1 (yes).
66. How long has it been since you had your last Pap smear? (151)
Read Only if Necessary
- a. Within the past year (1 to 12 months ago) 1
 - b. Within the past 2 years (1 to 2 years ago) 2
 - c. Within the past 3 years (2 to 3 years ago) 3
 - d. Within the past 5 years (3 to 5 years ago) 4
 - e. 5 or more years ago 5
 - Don't know/Not sure 7
 - Refused 9
- Ask Q67 only if Q58 = 1 (female) and Q65 = 1 (yes).
67. Was your last Pap smear done as part of a routine exam, or to check a current or previous problem? (152)
- a. Routine exam 1
 - b. Check current or previous problem 2
 - Other 3
 - Don't know/Not sure 7
 - Refused 9
- Ask Q68 if Q58 = 1 (female)
68. Have you had a hysterectomy? (153)

A hysterectomy is an operation to remove the uterus (womb)	a. Yes Go to Section 10: HIV/AIDS	1
	b. No	2
	Don't know/Not sure	7
	Refused	9

If respondent 45 years old or older, go to Section 10: HIV/AIDS

Ask Q69 only if respondent is female, has not had a hysterectomy, and is 44 years of age or younger (Q58 = 1, Q68 = 2, 7, or 9, and Q44 is less than or equal to 44).

69.	To your knowledge, are you now pregnant?	(154)
	a. Yes	1
	b. No	2
	Don't know/Not sure	7
	Refused	9

Section 10: HIV/AIDS

If respondent is 65 years old or older, go to Module 6.

The next few questions are about the national health problem of HIV, the virus that causes AIDS. Please remember that your answers are strictly confidential and that you don't have to answer every question if you don't want to.

70. If you had a child in school, at what grade do you think he or she should begin receiving education in school about HIV infection and AIDS? (155-156)
- | | | | |
|-------------------------------|---------------------|--|-----|
| Code 01
through 12 | a. Grade | | -- |
| | b. Kindergarten | | 5 5 |
| | c. Never | | 8 8 |
| | Don't know/Not sure | | 7 7 |
| | Refused | | 9 9 |
71. If you had a teenager who was sexually active, would you encourage him or her to use a condom? (157)
- | | | |
|-------------------------|--|---|
| a. Yes | | 1 |
| b. No | | 2 |
| Would give other advice | | 3 |
| Don't know/Not sure | | 7 |
| Refused | | 9 |
72. What are your chances of getting infected with HIV, the virus that causes AIDS? (158)
- Would you say: **Please Read**
- | | | |
|---------------------|-------------------|---|
| a. High | | 1 |
| b. Medium | | 2 |
| c. Low | | 3 |
| or | | |
| d. None | | 4 |
| Not applicable | Go to Q76a | 5 |
| Don't know/Not sure | | 7 |
| Refused | | 9 |
- Do not read these responses**
- Ask Q73 if respondent is under the age of 65 and Q72 is not equal to 5.
73. Have you donated blood since March 1985? (159)
- | | | |
|---------------------|-------------------|---|
| a. Yes | | 1 |
| b. No | Go to Q75a | 2 |
| Don't know/Not sure | Go to Q75a | 7 |
| Refused | Go to Q75a | 9 |
- Ask Q74 if respondent is under the age of 65, Q72 is not equal to 5, and Q73 = 1.
74. Have you donated blood in the past 12 months? (160)
- | | | |
|---------------------|--|---|
| a. Yes | | 1 |
| b. No | | 2 |
| Don't know/Not sure | | 7 |
| Refused | | 9 |

Ask Q75 only if respondent is under the age of 65, Q72 is not 5 and Q73 = 1.

	75.	Except for tests you may have had as part of blood donations, have you ever been tested for HIV? (161)	
Include saliva tests	a.	Yes	Go to Q76 1
	b.	No	Go to Next Module 2
		Don't know/Not sure	Go to Next Module 7
		Refused	Go to Next Module 9

Ask Q75a only if respondent is under the age of 65, Q72 is not 5 and Q73 = 1.

	75a.	Have you ever been tested for HIV? (162)	
Include saliva tests	a.	Yes	Go to Q76a 1
	b.	No	Go to Next Module 2
		Don't know/Not sure	Go to Next Module 7
		Refused	Go to Next Module 9

Ask Q76 only if respondent is under the age of 65, Q72 is not 5 and Q73 = 1.

	76.	Not including your blood donations, have you been tested for HIV in the past 12 months (163)	
Include saliva tests	a.	Yes	Go to Q77 1
	b.	No	Go to Next Module 2
		Don't know/Not sure	Go to Next Module 7
		Refused	Go to Next Module 9

Ask Q76a only if respondent is under the age of 65, Q72 = 5 and Q75a = 1.

	76a.	Have you been tested for HIV in the past 12 months? (164)	
Include saliva tests	a.	Yes	1
	b.	No	Go to Next Module 2
		Don't know/Not sure	Go to Next Module 7
		Refused	Go to Next Module 9

Ask Q77 only if respondent is under the age of 65 and Q76 or Q76a = 1 (yes - have been tested for HIV in the last 12 months).

77. What was the main reason you had your last test for HIV? (165-166)

Reason code		
Read Only if Necessary		--
a. For hospitalization or surgical procedure		01
b. To apply for health insurance		02
c. To apply for life insurance		
03		
d. For employment	Go to Next Module	04
e. To apply for a marriage license		05
f. For military induction or military service		06
g. For immigration		07
h. Just to find out if you were infected		
I. Because of referral by a doctor		09
j. Because of pregnancy		10
k. Referred by your sex partner		11
l. Because it was part of a blood donation process	Go to Next Module	12
m. For routine check-up		13
n. Because of occupational exposure		14
o. Because of illness		15
p. Because I am at risk for HIV		16
q. Other		87
Don't know/Not sure		77
		08

Ask Q78 if respondent is under the age of 65, Q76 or Q76a = 1 (yes - have been tested for HIV in the last 12 months), and Q77 is not 12.

78. Where did you have your last test for HIV? (167-168)

Facility Code		
Read Only if Necessary		--
a. Private doctor, HMO		01
b. Blood bank, plasma center, Red Cross		02
c. Health department		03
d. AIDS clinic, counseling, testing site		04
e. Hospital, emergency room, outpatient clinic		05
f. Family planning clinic		06
g. Prenatal clinic, obstetrician's office		07
h. Tuberculosis clinic		08
I. STD clinic		09
j. Community health clinic		10
k. Clinic run by employer		11
l. Insurance company clinic		12
m. Other public clinic		13
n. Drug treatment facility		14
o. Military induction or military service site		15
p. Immigration site		16
q. At home, home visit by nurse or health worker		17
r. At home using self-sampling kit		18
s. In jail or prison		19
t. Other		87
Don't know/Not sure		77
Refused		99

Ask Q79 if respondent is under the age of 65, Q76 or Q76a = 1 (yes - have been tested for HIV in the last 12 months), and Q77 does not equal 12.

- | | | |
|-----|--|-------|
| 79. | Did you receive the results of your last test? | (169) |
| | a. Yes | 1 |
| | b. No | 2 |
| | Don't know/Not sure | 7 |
| | Refused | 9 |

Ask Q80 only if respondent is under the age of 65, Q76 or Q76a = 1 (yes - have been tested for HIV in the last 12 months), Q77 is not 12, and Q79 = 1.

- | | | |
|-----|--|-------|
| 80. | Did you receive counseling or talk with a health care professional about the results of your test? | (170) |
| | a. Yes | 1 |
| | b. No | 2 |
| | Don't know/Not sure | 7 |
| | Refused | 9 |

State Added Module 3: Sexual Behavior**If respondent 50 years old or older, go to next module**

Next, I am going to ask you about sexual behaviors. Please remember that your answers are strictly confidential and that you don't have to answer every question if you don't want to.

- SM3_1. During the past twelve months, with how many people have you had sexual intercourse? (392-393)
- | | | |
|-----------|----------------------|-----|
| a. Number | | -- |
| b. None | Skip to sm3_4 | 8 8 |
| | Don't know/Not sure | 7 7 |
| | Refused | 9 9 |
- SM3_2. The last time you had sexual intercourse was it with your regular or steady partner or with someone else? (394)
- | | | |
|--|---------------------|---|
| a. Regular or steady partner | | 1 |
| b. With someone other than regular or steady partner | | 2 |
| | Don't know/Not sure | 7 |
| | Refused | 9 |
- SM3_3. Was a condom used the last time you had sexual intercourse? (395)
- | | | |
|--------|---------------------|---|
| a. Yes | | 1 |
| b. No | | 2 |
| | Don't know/Not sure | 7 |
| | Refused | 9 |
- I'm going to read you a list of activities in which you may have participated
Have you... READ STATEMENT.
- SM3_4. Used intravenous drugs in the past year? (396)
- | | | |
|-----|---------------------|---|
| Yes | | 1 |
| No | | 2 |
| | Don't know/Not sure | 7 |
| | Refused | 9 |
- SM3_5. Been tested for a sexually transmitted or venereal disease in the past year? (397)
- | | | |
|-----|---------------------|---|
| Yes | | 1 |
| No | | 2 |
| | Don't know/Not sure | 7 |
| | Refused | 9 |
- SM3_6. Tested positive for having HIV, the virus that causes ? (398)
- | | | |
|-----|---------------------|---|
| Yes | | 1 |
| No | | 2 |
| | Don't know/Not sure | 7 |
| | Refused | 9 |

If female, skip to next module (family planning)

- SM3_7. Had sex with another male within the last year (399)
- | | | |
|-----|---------------------|---|
| Yes | | 1 |
| No | | 2 |
| | Don't know/Not sure | 7 |
| | Refused | 9 |

If male skip next module on family planning for women and go to family planning module for men.

CDC Module 3: Family Planning

If respondent is male or age 45 years old or older, go to next module

If pregnant now ("Yes" to core Q69), go to Mod3_2a.

The next few questions ask about pregnancy and ways to prevent pregnancy.

Mod3_1.	Have you been pregnant in the last 5 years?		(205)
	a. Yes		1
	b. No	Go to Mod3_3	2
	Don't know/Not sure	Go to Mod3_3	7
	Refused	Go to Mod3_3	9

Mod3_2.	Thinking back to your last pregnancy, just before you got pregnant, how did you feel about becoming pregnant?		(206)
---------	---	--	-------

Would you say: **Please Read**

	a. You wanted to be pregnant sooner	Go to Mod3_3	1
	b. You wanted to be pregnant later	Go to Mod3_3	2
	c. You wanted to be pregnant then	Go to Mod3_3	3
	d. You didn't want to be pregnant then or at anytime in the future	Go to Mod3_3	4
	e. You don't know	Go to Mod3_3	7
Do not read	Refused	Go to Mod3_3	9

Ask Mod3_2a if pregnant (Q69 = 1)

Mod3_2a.	Thinking back to just before you got pregnant with your current pregnancy, how did you feel about becoming pregnant?		(207)
----------	--	--	-------

Would you say: **Please Read**

	a. You wanted to be pregnant sooner		1
	b. You wanted to be pregnant later		2
	c. You wanted to be pregnant then		3
	d. You didn't want to be pregnant then or at any time in the future		4
	e. You don't know		7
Do not read	Refused		9

If respondent had hysterectomy ("Yes" to core Q68) or is pregnant now ("Yes" to core Q69), go to Mod3_6.
If respondent has no sex partners ("None" to SM3_1 in Sexual Behavior module), go to Mod3_6.

Mod3_3.	Are you or your [fill in (husband/partner) from core Q47] using any kind of birth control now? Birth control means having your tubes tied, vasectomy, the pill, condoms, diaphragm, foam, rhythm, Norplant, shots (Depo-provera) or any other way to keep from getting pregnant.		(208)
	a. Yes		1
	b. No	Go to Mod3_5	2
	c. Not sexually active	Go to Mod3_6	3
	Don't know/Not sure	Go to Mod3_6	7
	Refused	Go to Mod3_6	9

Mod3_4.	What kinds of birth control are you or your [fill in (husband/partner) from core Q47] using now? (209-210)		
	Kind Code --		
	Read Only if Necessary		
If more than one, code other and specify each method code	a. Tubes tied (sterilization)	Go to Mod3_6	01
	b. Vasectomy (sterilization)	Go to Mod3_6	02
	c. Pill	Go to Mod3_6	03
	d. Condoms	Go to Mod3_6	04
	e. Foam, jelly, cream	Go to Mod3_6	05
	f. Diaphragm	Go to Mod3_6	06
	g. Norplant	Go to Mod3_6	07
	h. Shots (Depo-Provera)	Go to Mod3_6	08
	i. Withdrawal	Go to Mod3_6	09
	j. Other (specify: _____)	Go to Mod3_6	87
	Don't know/Not sure	Go to Mod3_6	77
	Refused	Go to Mod3_6	99
	Ask Mod3_5 only if Mod3_3 = 2.		
Mod3_5.	What are your reasons for not using any birth control now? (211-212)		
	Reason Code --		
	Read Only if Necessary		
If more than one, code other and specify each method code	a. I am not having sex		01
	b. I want to get pregnant		02
	c. I don't want to use birth control		03
	d. My husband or partner doesn't want to use birth control		04
	e. I don't think I can get pregnant		05
	f. I can't pay for birth control		06
	g. Other (specify: _____)		87
	h. Don't know/Not sure		77
	I. Refused		99
Mod3_6.	Where is your usual source of services for female health concerns, such as family planning, annual exams, breast exams, tests for sexually transmitted diseases, and other female health concerns? (213)		
	Would you say: Please Read		
Do not read these responses	a. A family planning clinic [Example: a Planned Parenthood clinic]	Go to Mod3_8	1
	b. A health department clinic		2
	c. A community health center		3
	d. A private gynecologist		4
	e. A general or family physician		5
	f. Some other kind of place		7
	Don't know/not sure		8
	Refused		9
Mod3_7.	Have you ever used the services at a family planning clinic? (214)		
Example: a Planned Parenthood clinic	a. Yes		1
	b. No	Go to Next Module	2
	Don't know/not sure	Go to Next Module	7
	Refused	Go to Next Module	9
Mod3_8.	How long has it been since you used the services at a family planning clinic? (215)		

Read Only if Necessary

a. Within the past year (1 to 12 months ago)	1
b. Within the past 2 years (1 to 2 years ago)	2
c. Within the past 3 years (2 to 3 years ago)	3
d. Within the past 5 years (3 to 5 years ago)	4
e. 5 or more years ago	5
Don't know/Not sure	7
Refused	9

If respondent's usual source of services for female health concerns is health department (response "b" to Mod3_6), go to SM4_3

SM4_1.	Have you ever used a health department clinic for female health concerns?	(400)
a.	Yes	1
b.	No	Go to Next Module 2
	Don't know/Not sure	Go to Next Module 7
	Refused	Go to Next Module 9

SM4_2.	How long has it been since you used a health department clinic for female health concerns?	(401)
	Read Only if Necessary	
a.	Within the past year (1 to 12 months ago)	Go to next module 1
b.	Within the past 2 years (1 to 2 years ago)	Go to next module 2
c.	Within the past 3 years (2 to 3 years ago)	Go to next module 3
d.	Within the past 5 years (3 to 5 years ago)	Go to next module 4
e.	5 or more years ago	Go to next module 5
	Don't know/Not sure	Go to next module 7
	Refused	Go to next module 9

Ask SM4_3 only if Mod3_6 = 2

SM4_3.	Earlier you said that you went to a health department clinic for female health concerns. How long has it been since you used a health department clinic for those services?	(402)
	Read Only if Necessary	
a.	Within the past year (1 to 12 months ago)	1
b.	Within the past 2 years (1 to 2 years ago)	2
c.	Within the past 3 years (2 to 3 years ago)	3
d.	Within the past 5 years (3 to 5 years ago)	4
e.	5 or more years ago	5
	Don't know/Not sure	7
	Refused	9

Module SM5: Family Planning for males

Only get this module if male and less 45 years old.

The next few questions ask about pregnancy and ways to prevent pregnancy.

SM5_1	Have you had sexual intercourse that resulted in pregnancy in the last 5 years ?	(403)
	a. Yes	1
	b. No	2
	Don't know/Not sure	7
	Refused	9
SM5_2	When was the last time your sex partner became pregnant by you ?	(404)
	Please Read	
	a. She is currently pregnant	1
	b. Pregnant within the past year	2
	c. Within the past 5 years	3
	Don't know/Not Sure	7
	Refused	9
Do not read these responses		
SM5_3.	Thinking back to just before she got pregnant, how did you feel about her becoming pregnant?	(405)
	Would you say: Please Read	
	a. You wanted her to be pregnant sooner	1
	b. You wanted her to be pregnant later	2
	c. You wanted her to be pregnant then	3
	d. You didn't want her to be pregnant then or at anytime in the future	4
Do not read	Don't know/not sure	7
	Refused	9

If male respondent answers ("None" to SM3_1), or his partner is currently pregnant ("a" to SM5_2) go to SM5_7.

SM5_4.	Are you or her [fill in (wife/partner) from core Q47] using any kind of birth control now? Birth control means having your tubes tied, vasectomy, the pill, condoms, diaphragm, foam, rhythm, Norplant, shots (Depo-provera) or any other way to keep from getting pregnant.	(406)
	a. Yes	1
	b. No	2
	c. Not sexually active	3
	Don't know/Not sure	7
	Refused	9

SM5_5. What kinds of birth control are you or your [fill in (wife/partner) from core Q47] using now? (407)

Read Only if Necessary

If more than one, code other and specify each method code.

a. Tubes tied (sterilization)	Go to SM5_7	0 1
b. Vasectomy (sterilization)	Go to SM5_7	0 2
c. Pill	Go to SM5_7	0 3
d. Condoms	Go to SM5_7	0 4
e. Foam, jelly, cream	Go to SM5_7	0 5
f. Diaphragm	Go to SM5_7	0 6
g. Norplant	Go to SM5_7	0 7
h. Shots (Depo-Provera)	Go to SM5_7	0 8
i. Withdrawal	Go to SM5_7	0 9
j. Other (specify: _____) 25 characters in opened file	Go to SM5_7	8 7
Don't know/Not sure	Go to SM5_7	7 7
Refused	Go to SM5_7	9 9

SM5_6. What are your reasons for not using any birth control now? (408)

Read only if necessary. If more than one code other and specify each method

a. I am not having sex		0 1
b. I want my partner to get pregnant		0 2
c. I don't want to use birth control		0 3
d. My wife or partner doesn't want to use birth control		0 4
e. I don't think my wife or partner can get pregnant		0 5
f. I can't pay for birth control		0 6
g. Other (specify: _____) 25 characters in openended file		8 7
Don't know/Not sure		7 7
Refused		9 9

SM5_7. In the last year, have you gone to a health care provider for birth control or family planning services including condoms or vasectomy? (409)

a. Yes		1
b. No	Go to Next Module	2
Don't know/Not sure	Go to Next Module	7
Refused	Go to Next Module	9

SM5_8. When you went for birth control or family planning services in the last year, did you go to either a Planned Parenthood clinic or a health department clinic? (410)

a. Yes		1
b. No		2
Don't know/Not sure		7
Refused		9

SM6. State added: rabies

SM6_1.	My next question is about rabies. Some animals, including bats, can carry rabies. During the past 12 months, did anyone see a bat inside your home?	(411)	
	a Yes	1	
	b No	2	Skip to SM7_1
	Don't know/Not sure	7	Skip to SM7_1
	Refused	9	Skip to SM7_1
SM6_2.	In which room of the house was the bat first found? IF NECESSARY: The most recent time the bat was seen.	(412-413)	
	Attic	11	
	Basement	12	
	Bedroom	13	
	Dining Room	14	
	Garage	15	
	Kitchen	16	
	Living Room	17	
	Other (Specify) <u>15 characters in opened file</u>		88
	Don't Know	77	
	Refused	99	
SM6_3	Did the bat bite anyone?	(414)	
	Yes	1	
	No	2	
	Don't Know	7	
	Refused	9	
SM6_4.	Did the bat scratch anyone?	(415)	
	Yes	1	
	No	2	
	Don't Know	7	
	Refused	9	
SM6_5.	Was the bat found in the room where someone had been sleeping during the previous 12 hours?	(416)	
	YES	1	
	NO	2	Skip to SM6_7
	DON'T KNOW	7	Skip to SM6_7
	REFUSED	9	Skip to SM6_7
SM6_6.	How many people had been sleeping in the room when the bat was found? ENTER NUMBER OF PEOPLE:	(417)	
	DON'T KNOW	7	
	7 OR MORE	8	
	REFUSED	9	

SM6_7.	Were doors open for the bat to fly into a room where someone was sleeping?	(418)
	YES	1
	NO	2
	DON'T KNOW	7
	REFUSED	9
SM6_8.	How many people were sleeping in this room or these rooms with open doors?	(419)
	ENTER NUMBER OF PEOPLE:	
	7 OR MORE	8
	DON'T KNOW	7
	REFUSED	9
SM6_9.	Was the bat in a room where it might have bitten or scratched someone who was awake, but who would not have been able to tell you -- for example, a young child or a mentally disabled person?	(420)
	YES	1
	NO	2
	DON'T KNOW	7
	REFUSED	9
SM6_10.	Did anyone handle or touch the bat with bare hands?	(421)
	YES	1
	NO	2
	DON'T KNOW	7
	REFUSED	9
SM6_11.	Did you consult anyone (for example, a doctor, nurse, or the health department) about the bat being in your house?	(422)
	YES	1
	NO	2
	DON'T KNOW	7
	REFUSED	9
SM6_12.	Whom did you consult?	(423)
	CHOOSE First mentioned	
	Code list	
	Doctor	1
	Friend	2
	Health Department	3
	Neighbor	4
	Nurse	5
	Veterinarian	6
	Other (Specify)	8
	Don't Know / No Others	7
	Refused	9
		Skip to SM6_13
		Skip to SM6_13

SM6_12a	Who else did you consult? (Or second mention)		(424)
	Code list		
	Doctor		1
	Friend		2
	Health Department		3
	Neighbor		4
	Nurse		5
	Veterinarian		6
	Other (Specify)		8
	Don't Know / No Others		7
	Refused		9
SM6_13.	Was the bat alive when it was found?		(425)
	YES		1
	NO	Skip to SM6_15	2
	DON'T KNOW		7
	REFUSED		9
SM6_14.	Was the bat captured?		(426)
	YES		1
	NO	Skip to SM6_16	2
	DON'T KNOW		7
	REFUSED		9
SM6_15.	Was the bat tested for rabies?		(427)
	YES	Skip to SM6_17	1
	NO	Skip to SM6_17	2
	DON'T KNOW	Skip to SM6_17	7
	REFUSED	Skip to SM6_17	9
ONLY GET THIS QUESTION IF SM6_14 = 2 (NO)			
SM6_16.	Could you have captured the bat if you wanted to?		(428)
	YES		1
	NO		2
	DON'T KNOW		7
	REFUSED		9
SM6_17.	Was anyone in the house vaccinated for rabies after the bat was found?		(429)
	Yes		1
	No		2
	Don't Know		7
	Refused		9

State added SM 7: quality of life		some/disabled	
"The next two questions are about your support needs and life satisfaction"			
SM7_1	How often do you get the social and emotional support you need?		(479)
	Would you say:		
Please read	a. Always		1
	b. Usually		2
	c. Sometimes		3
	d. Rarely		4
	e. Never		5
Do not read	Don't know / Not sure		7
	Refused		9
SM7_2	In general, how satisfied are you with your life?		(480)
	Would you say:		
Please read	a. Very satisfied		1
	b. Satisfied		2
	c. Dissatisfied		3
	d. Very dissatisfied		4
Do not read	Don't know / Not sure		7
	Refused		9
"These next questions are about limitations you may have in your in your daily life."			
SM7_3	Are you limited in any way in any activities because of any impairment or health problem?		(481)
	a. Yes		1
	b. No		2
	Don't know / Not sure		7
	Refused		9
SM7_4	Because of any impairment or health problem, do you have any trouble learning, remembering, or concentrating?		(482)
	a. Yes		1
	b. No		2
	Don't know / Not sure		7
	Refused		9

SM7_5	If you use special equipment or help from others to get around, what type do you use?	(483-484)
	(Code up to 3 responses)	
	a. No special equipment or help used	Go to SM7_7 01
	b. Other people	02
	c. Cane or walking stick	03
	d. Walker	04
	e. Crutch or crutches	05
	f. Manual wheelchair	06
	g. Motorized wheelchair	07
	h. Electric mobility scooter	08
	i. Artificial leg	09
	j. Brace	10
	k. Service animal (ie., guide dog or other animal specifically trained to provide assistance)	11
	l. Oxygen / special breathing equipment	12
	m. Other (specify): _____ (25 chars in opened file)	88
	Don't know / Not sure	77
	Refused	99

SM7_6	Using special equipment or help from others, what is the farthest distance that you can go?	(485)
	Would you say:	
Please read responses	a. Across a small room	1
	b. About the length of a typical house	2
	c. About one or two city blocks	3
	d. About one mile	4
	e. More than one mile	5
Do not read	Don't know / Not sure	7
	Refused	9

SM7_7	What is the farthest distance you can walk by yourself, without any special equipment or help from others?	(486)
	Would you say:	
Please read responses	a. Not any distance	1
	b. Across a small room	2
	c. About the length of a typical house	3
	d. About one or two city blocks	4
	e. About one mile	5
	f. More than one mile	6
Do not read	Don't know / Not sure	7
	Refused	9

SM7_8 Are you limited in the kind or amount of work you can do because of any impairment or health problem? (487)

- a. Yes 1
- b. No 2
- Don't know / Not sure 7
- Refused 9

Use as Definition for further skips on DISABLED

If "yes" to SM7_3 or SM7_4 or SM7_8, or "b-m" on SM7_5, ask SM7_Q9-12, otherwise skip to SM7_27.

SM7_9 What is the MAJOR impairment or health problem that limits your activities? (488-489)

"Do not read. Code only one category."

If respondent says "I'm not limited," say "I'm referring to the impairment you indicated on an earlier question."

"If respondent mentions memory loss, say "Have you been diagnosed with Alzheimer's Disease?"

- a. Arthritis / rheumatism 01
- b. Back or neck problem 02
- c. Fractures, bone / joint injury 03
- d. Walking problem 04
- e. Lung / breathing problem 05
- f. Hearing problem 06
- g. Eye / vision problem 07
- h. Heart problem 08
- i. Stroke problem 09
- j. Hypertension / high blood pressure 10
- k. Diabetes 11
- l. Cancer 12
- m. Depression / anxiety / emotional problem 13
- n. Other impairment/problem (Specify _____) 14
- Don't know / Not sure 77
- Refused 99

SM7_10 For HOW LONG have your activities been limited because of your major impairment or health problem? (490-492)

"Do not read. Code using respondent's unit of time."

- a. Days 1 __
- b. Weeks 2 __
- c. Months 3 __
- d. Years 4 __
- Don't know / Not sure 7 7 7
- Refused 9 9 9

SM7_11	Because of any impairment or health problem, do you need the help of other persons with your PERSONAL CARE needs, such as eating, bathing, dressing, or getting around the house?	(493)
a.	Yes	1
b.	No	2
	Don't know / Not sure	7
	Refused	9

SM7_12	Because of any impairment or health problem, do you need the help of other persons in handling your ROUTINE NEEDS, such as everyday household chores, doing necessary business, shopping, or getting around for other purposes?	(494)
a.	Yes	1
b.	No	2
	Don't know / Not sure	7
	Refused	9

If "unable to work" ("h" on Q50-employment) or If "out of work" ("e" or "d" on Q50-employment) and under age 65, and "yes" on Q8, go to SM7_13.
If "No" on Q8, skip to SM7_27.

These questions are about barriers that keep you from working. Even though some of these barriers may not apply to your particular situation, I do need to ask you about all of them. For each factor, please tell me whether it is a major barrier, a minor barrier or not a barrier to being employed or not applicable.

SM7_13	Are you concerned that ... you would lose your Supplemental Security Income, known as SSI, your Supplemental Security Disability Income, Known as SSDI, or other sources of income if you went to work?	(495)
a.	Major barrier	1
b.	Minor barrier	2
c.	No barrier	3
d.	Not Applicable	4
	Don't know/ not sure	7
	Refused	9
SM7_14	Are you concerned that ... you would lose your subsidized housing if you went to work?	(496)
a.	Major barrier	1
b.	Minor barrier	2
c.	No barrier	3
d.	Not Applicable	4
	Don't know/ not sure	7
	Refused	9
SM7_15	Are you concerned that ... you would lose your Medicare or Medicaid coverage if you went to work?	(497)
a.	Major barrier	1
b.	Minor barrier	2
c.	No barrier	3
d.	Not Applicable	4
	Don't know/ not sure	7
	Refused	9

SM7_16	Are you concerned that ... you would not be able to find a job offering affordable health insurance as a benefit?	(498)
	a. Major barrier	1
	b. Minor barrier	2
	c. No barrier	3
	d. Not Applicable	4
	Don't know/ not sure	7
	Refused	9
SM7_17	Are you concerned that ...you would lose your subsidized personal attendant services if you went to work?	(499)
	a. Major barrier	1
	b. Minor barrier	2
	c. No barrier	3
	d. Not Applicable	4
	Don't know/ not sure	7
	Refused	9
SM7_18	Are you concerned that ... you would need additional attendant care services at home if you went to work?	(500)
	a. Major barrier	1
	b. Minor barrier	2
	c. No barrier	3
	d. Not Applicable	4
	Don't know/ not sure	7
	Refused	9
SM7_19	Are you concerned that ...you would not be able to take time off for health-related reasons?	(501)
	a. Major barrier	1
	b. Minor barrier	2
	c. No barrier	3
	d. Not Applicable	4
	Don't know/ not sure	7
	Refused	9
SM7_20	Are you concerned that ... you would need work accomodations, such as accessible work space?(502)	
	a. Major barrier	1
	b. Minor barrier	2
	c. No barrier	3
	d. Not Applicable	4
	Don't know/ not sure	7
	Refused	9
SM7_21	Are you concerned that ... you wouldn't have control over the pace or scheduling of work activities?	(503)
	a. Major barrier	1
	b. Minor barrier	2
	c. No barrier	3
	d. Not Applicable	4
	Don't know/ not sure	7
	Refused	9

SM7_22	Are you concerned that ... you don't have convenient or accessible transportation?	(504)
	a. Major barrier	1
	b. Minor barrier	2
	c. No barrier	3
	d. Not Applicable	4
	Don't know/ not sure	7
	Refused	9
SM7_23	Are you concerned that ... you wouldn't earn enough money to make up for the disability-related benefits that you would lose by becoming employed?	(505)
	a. Major barrier	1
	b. Minor barrier	2
	c. No barrier	3
	d. Not Applicable	4
	Don't know/ not sure	7
	Refused	9
SM7_24	Are you concerned that ...employers have negative attitudes toward people with disabilities?	(506)
	a. Major barrier	1
	b. Minor barrier	2
	c. No barrier	3
	d. Not Applicable	4
	Don't know/ not sure	7
	Refused	9
SM7_25	Are you concerned that ... your training or skills are not adequate to be employed?	(507)
	a. Major barrier	1
	b. Minor barrier	2
	c. No barrier	3
	d. Not Applicable	4
	Don't know/ not sure	7
	Refused	9
SM7_26	Are you concerned that ... there were no jobs available that you could perform?	(508)
	a. Major barrier	1
	b. Minor barrier	2
	c. No barrier	3
	d. Not Applicable	4
	Don't know/ not sure	7
	Refused	9
SM7_27	During the past 30 days, for about how many days did PAIN make it hard for you to do your usual activities, such as self-care, work, or recreation?	(509-510)
	a. Number of days	88
	b. None	77
	Don't know / Not sure	77
	Refused	99

SM7_28	During the past 30 days, for about how many days have you felt SAD, BLUE, or DEPRESSED? (511-512)	
a.	Number of days	—
b.	None	88
	Don't know / Not sure	77
	Refused	99
SM7_29	During the past 30 days, for about how many days have you felt WORRIED, TENSE, or ANXIOUS? (513-516)	
a.	Number of days	—
b.	None	88
	Don't know / Not sure	77
	Refused	99
SM7_30	During the past 30 days, for about how many days have you felt that you did not get ENOUGH REST or SLEEP? (517-518)	
a.	Number of days	—
b.	None	88
	Don't know / Not sure	77
	Refused	99
SM7_31	During the past 30 days, for about how many days have you felt VERY HEALTHY and FULL OF ENERGY? (519-520)	
a.	Number of days	—
b.	None	88
	Don't know / Not sure	77
	Refused	99

If number of adults equals 1 and core Q40a, Q40b and Q40c are all "none" go to next module.

SM7_32. Is there anyone in your household who is LIMITED in any way in any activities because of any impairment or health problem? (521)
(Insert "else" if "yes" to SM7_3, SM7_4, SM7_8, or "b-m" on SM7_5)

- | | | | |
|----|---------------------|---------------------|---|
| a. | Yes | | 1 |
| b. | No | [Go to next module] | 2 |
| | Don't know/Not sure | [Go to next module] | 7 |
| | Refused | [Go to next module] | 9 |

SM7_33-37. How old are these people?

Code ages	a.	Person 1	---	(522-523)
97=97 and older	b.	Person 2	---	(524-525)
98=Dk/Ns	c.	Person 3	---	(526-527)
99=Refused	d.	Person 4	---	(528-529)
	e.	Person 5	---	(530-531)
	f.	97 and older	9 7	
	g.	Don't know/Not sure	9 8	
	h.	Refused	9 9	

Ask QSM7_38 only if SM7_33 < 99.

SM7_38. What is the MAJOR impairment or health problem that limits the (fill in age) year-old's activities?
Do not read. Code only one category. (532-533)

"If respondent mentions memory loss, say "Have they been diagnosed with Alzheimer's Disease?"

- | | | |
|----|--|----|
| a. | Arthritis / rheumatism | 01 |
| b. | Back or neck problem | 02 |
| c. | Fractures, bone / joint injury | 03 |
| d. | Walking problem | 04 |
| e. | Lung / breathing problem | 05 |
| f. | Hearing problem | 06 |
| g. | Eye / vision problem | 07 |
| h. | Heart problem | 08 |
| i. | Stroke problem | 09 |
| j. | Hypertension / high blood pressure | 10 |
| k. | Diabetes | 11 |
| l. | Cancer | 12 |
| m. | Depression / anxiety / emotional problem | 13 |
| n. | Other impairment/problem (Specify _____) | 14 |
| o. | Alzheimer's Disease | 15 |
| | Don't know / Not sure | 77 |
| | Refused | 99 |

Ask QSM7_39 only if SM7_34 < 99.

SM7_39. What is the MAJOR impairment or health problem that limits the (fill in age) year-old's activities?
Do not read. Code only one category. (534-535)

"If respondent mentions memory loss, say "Have they been diagnosed with Alzheimer's Disease?"

- | | | |
|----|---|----|
| a. | Arthritis / rheumatism | 01 |
| b. | Back or neck problem | 02 |
| c. | Fractures, bone / joint injury | 03 |
| d. | Walking problem | 04 |
| e. | Lung / breathing problem | 05 |
| f. | Hearing problem | 06 |
| g. | Eye / vision problem | 07 |
| h. | Heart problem | 08 |
| i. | Stroke problem | 09 |
| j. | Hypertension / high blood pressure | 10 |
| k. | Diabetes | 11 |
| l. | Cancer | 12 |
| m. | Depresssion / anxiety / emotional problem | 13 |
| n. | Other impairment/problem (Specify _____) | 14 |
| o. | Alzheimer's Disease | 15 |
| | Don't know / Not sure | 77 |
| | Refused | 99 |

Ask QSM7_40 only if SM7_35 < 99.

SM7_40. What is the MAJOR impairment or health problem that limits the (fill in age) year-old's activities?
Do not read. Code only one category. (536-537)

"If respondent mentions memory loss, say "Have they been diagnosed with Alzheimer's Disease?"

- | | | |
|----|---|----|
| a. | Arthritis / rheumatism | 01 |
| b. | Back or neck problem | 02 |
| c. | Fractures, bone / joint injury | 03 |
| d. | Walking problem | 04 |
| e. | Lung / breathing problem | 05 |
| f. | Hearing problem | 06 |
| g. | Eye / vision problem | 07 |
| h. | Heart problem | 08 |
| i. | Stroke problem | 09 |
| j. | Hypertension / high blood pressure | 10 |
| k. | Diabetes | 11 |
| l. | Cancer | 12 |
| m. | Depresssion / anxiety / emotional problem | 13 |
| n. | Other impairment/problem (Specify _____) | 14 |
| o. | Alzheimer's Disease | 15 |
| | Don't know / Not sure | 77 |
| | Refused | 99 |

Ask SM7_41 only if SM7_36 < 99.

SM7_41. What is the MAJOR impairment or health problem that limits the (fill in age) year-old's activities?
Do not read. Code only one category. (538-539)

"If respondent mentions memory loss, say "Have they been diagnosed with Alzheimer's Disease?"

a.	Arthritis / rheumatism	01
b.	Back or neck problem	02
c.	Fractures, bone / joint injury	03
d.	Walking problem	04
e.	Lung / breathing problem	05
f.	Hearing problem	06
g.	Eye / vision problem	07
h.	Heart problem	08
i.	Stroke problem	09
j.	Hypertension / high blood pressure	10
k.	Diabetes	11
l.	Cancer	12
m.	Depression / anxiety / emotional problem	13
n.	Other impairment/problem (Specify _____)	14
o.	Alzheimer's Disease	15
	Don't know / Not sure	77
	Refused	99

Ask SM7_42 only if SM7_37 < 99.

SM7_42. What is the MAJOR impairment or health problem that limits the (fill in age) year-old's activities?
Do not read. Code only one category. (540-541)

"If respondent mentions memory loss, say "Have they been diagnosed with Alzheimer's Disease?"

a.	Arthritis / rheumatism	01
b.	Back or neck problem	02
c.	Fractures, bone / joint injury	03
d.	Walking problem	04
e.	Lung / breathing problem	05
f.	Hearing problem	06
g.	Eye / vision problem	07
h.	Heart problem	08
i.	Stroke problem	09
j.	Hypertension / high blood pressure	10
k.	Diabetes	11
l.	Cancer	12
m.	Depression / anxiety / emotional problem	13
n.	Other impairment/problem (Specify _____)	14
o.	Alzheimer's Disease	15
	Don't know / Not sure	77
	Refused	99

17. State added: secondhand smoke some questions

Now I would like to ask you some questions about secondhand smoke. Secondhand smoke is smoke from someone else's cigarette, cigar, or pipe that you breathe.

- SM8_1. Would you say that breathing secondhand smoke is: READ 1-4 (430)
- | | | |
|---|------------------------------------|---|
| a | Very harmful to one's health | 1 |
| b | Somewhat harmful to one's health | 2 |
| c | Not very harmful to one's health | 3 |
| d | Not harmful at all to one's health | 4 |
| | Don't know/Not Sure | 7 |
| | Refused | 9 |
- SM8_2. Do you agree or disagree with the following statement: People should be protected from secondhand smoke. (431)
- | | | |
|---|---------------------------------------|---|
| a | Strongly agree | 1 |
| b | Somewhat agree | 2 |
| c | Neither agree nor disagree (not read) | 3 |
| d | Strongly disagree | 4 |
| e | Somewhat disagree | 5 |
| | Don't know/Not sure | 7 |
| | Refused | 9 |
- SM8_3. On how many of the past 30 days has someone, including yourself, smoked cigarettes, cigars, or pipes anywhere inside your home? (432-433)
- | | | |
|----|---------------------|-----|
| a. | Number of days | -- |
| b. | None | 8 8 |
| | Don't know/Not sure | 7 7 |
| | Refused | 9 9 |
- SM8_4. Which of the following statements best describes the rules about smoking inside your home: (434)
- READ 1-3
- | | | |
|---|--|---|
| a | No one is allowed to smoke anywhere inside your home | 1 |
| b | Smoking is allowed in some places or at some times | 2 |
| c | Smoking is permitted anywhere inside your home | 3 |
| | Don't know/Not sure | 7 |
| | Refused | 9 |
- If Question 50 on employment equal to 3, 4, 5, 6, 7, 8 or 9 (not employed) skip to SM8_10
- SM8_5. Within the past 12 months, has your employer offered any stop smoking program or any other help to employees who want to quit smoking? (435)
- | | | |
|----|---------------------|---|
| a. | Yes | 1 |
| b. | No | 2 |
| | Don't know/Not sure | 7 |
| | Refused | 9 |

SM8_6.	Does your place of work have an official policy that restricts smoking in any way?	(436)
	a Yes	1
	b No	2
	Don't know/Not sure	7
	Refused	9
SM8_7.	Which of these best describes your place of work's smoking policy for indoor public or common areas, such as lobbies, rest rooms, and lunch rooms?	(437)
	a Smoking is not allowed in any public areas	1
	b It is allowed in some public areas	2
	c It is allowed in all public areas	3
	Don't know/Not sure	7
	Refused	9
SM8_8.	Which of these statements best describes your place of work's smoking policy for work areas?	(438)
	a Smoking is not allowed in any work areas	1
	b It is allowed in some work areas	2
	c It is allowed in all work areas	3
	Don't know/Not sure	7
	Refused	9
		skip to SM8_10
SM8_9.	Would you like your work site to have a policy that restricts smoking in some way?	(439)
	a Yes	1
	b No	2
	Don't know/Not sure	7
	Refused	9
SM8_10.	In restaurants do you think that smoking should be allowed in all areas, in some areas, or not allowed at all?	(440)
	a Allowed in all areas	1
	b Allowed in some areas	2
	c Not allowed at all	3
	Don't know/Not sure	7
	Refused	9
SM8_11.	In indoor work areas do you think that smoking should be allowed in all areas, in some areas, or not allowed at all?	(441)
	a Allowed in all areas	1
	b Allowed in some areas	2
	c Not allowed at all	3
	Don't know/Not sure	7
	Refused	9
SM8_12.	In your opinion, how easy is it for minors to buy cigarettes and other tobacco products in your community?	(442)
	Would you say: READ 1-4	
	a Very easy	1
	b Somewhat easy	2
	c Somewhat difficult	3
	d Very difficult	4
	Don't know/Not Sure	7
	Refused	9

SM8_13.	Which of the following statements best describes how you think the tobacco industry is being treated these days: READ 1-3	(443)
	a People are too soft on the tobacco industry	1
	b People are treating the tobacco industry fairly	2
	c People are too hard on the tobacco industry	3
	Don't know/Not sure	7
	Refused	9
SM8_14.	Do you think that the tobacco companies have been honest or dishonest with the public about the dangers of tobacco use?	(444)
	Very honest	1
	Somewhat honest	2
	Neither honest nor dishonest (not read)	3
	Very dishonest	4
	Somewhat dishonest	5
	Don't know/Not Sure	7
	Refused	9
SM8_15.	Do you agree or disagree with the following statement: Store owners should be required to have a license to sell tobacco products, just like they are required to have a license to sell alcohol?	(445)
	Strongly agree	1
	Somewhat agree	2
	Neither agree nor disagree (not read)	3
	Strongly disagree	4
	Somewhat disagree	5
	Don't know/Not sure	7
	Refused	9
SM8_16.	Do you agree or disagree with the following statement: Tobacco use by both children and adults should not be allowed on school grounds or at any school events?	(446)
	Strongly agree	1
	Somewhat agree	2
	Neither agree nor disagree (not read)	3
	Strongly disagree	4
	Somewhat disagree	5
	Don't know/Not sure	7
	Refused	9
SM8_17.	Do you agree or disagree with the following statement: Advertising of tobacco products on outdoor billboards should be allowed?	(447)
	Strongly agree	1
	Somewhat agree	2
	Neither agree nor disagree (not read)	3
	Strongly disagree	4
	Somewhat disagree	5
	Don't know/Not sure	7
	Refused	9

SM8_18.	Do you agree or disagree with the following statement: Billboards that advertise tobacco products should not be allowed near places where children often go?	(448)
	Strongly agree	1
	Somewhat agree	2
	Neither agree nor disagree (not read)	3
	Strongly disagree	4
	Somewhat disagree	5
	Don't know/Not sure	7
	Refused	9
SM9_1.	Do you currently use any smokeless tobacco products such as chewing tobacco or snuff? Probe for which.	(449)
	Yes, chewing tobacco	1
	Yes, snuff	2
	Yes, both	3
	No, neither	4
	Don't know/Not sure	7
	Refused	9
		skip to SM 10-1
		skip to SM 10-1
		skip to SM 10-1
SM9_2.	On how many of the past 30 days did you use smokeless tobacco products?	(450-451)
	Days	
	None	88
	Don't know/Not sure	77
	refused	99
SM9_3.	Are you seriously considering stopping the use of smokeless tobacco within the next 6 months?	(452)
	Yes	1
	No	2
	Don't know/Not sure	7
	Refused	9
		Skip to SM10-1
SM9_4.	Are you planning to stop within the next 30 days?	(453)
	Yes	1
	No	2
	Don't know/Not sure	7
	Refused	9
SM10_1.	Do you currently smoke tobacco in a pipe?	(454)
	Yes	1
	No	2
	Don't know/Not sure	7
	Refused	9
		Skip to Next Module
		Skip to Next Module
		Skip to Next Module

SM10_2.	In the past month, did you smoke tobacco in a pipe: READ 1-4	(455)
	Everyday	1
	Several times a week	2
	About Once a week	3
	Less than once a week	4
	Don't know/Not sure	7
	Refused	9
SM10_3	Are you seriously considering stopping smoking a pipe within the next 6 months?	(456)
	Yes	1
	No	2
	Don't know/Not sure	7
	Refused	9
SM10_4	Are you planning to stop within the next 30 days?	(457)
	Yes	1
	No	2
	Don't know/Not sure	7
	Refused	9

SM11.. State Added module 11: Health Care Utilization

SM11_1 The next question is about the health care you received in the last 6 months from all doctors and other health professionals. On a scale of 0 to 10 where zero is the worst care possible and 10 is the best health care possible, how would you rate your health care? (458-459)

Rating 00 to 10	
Don't know	77
None	88
Refuse	99

Ask QSM11_2 only if Q7 is not equal to 88 and Q7a is not equal to 88, otherwise skip to SM12_1.

SM11_2. The next questions are about your experience with your health insurance plan. How would you rate the availability of information from your plan regarding eligibility, covered services, or administrative issues? Would you say... (460)

Excellent	1
Very good	2
Good	3
Fair	4
Poor or	5
You have no experience in this area	6
Don't know	7
Refused	9

SM11_3 Thinking about all your experience with your health insurance plan, on a scale of 0 to 10 where zero as the worst health insurance plan possible and 10 is the best health insurance plan possible, how would you rate your health insurance plan now? (461-462)

Rating 00 to 10	
Don't know	77
Refuse	99

If "yes" to SM7_3 or SM7_4 or SM7_8, or "b-m" on SM7_5, continue, otherwise skip to Next Module.

SM12_1. Is there one particular clinic, health center, doctor's office, or other place that you usually go to if you are sick or need advice about your health? (463)

a. Yes		1
b. More than one place		2
c. No go to next module		3
Don't know/Not sure	Go to Next Module	7
Refused	Go to Next Module	9

SM12_2. Thinking of the distance or time you travel to get to the place you usually go to, how would you rate the convenience of the place? (464)

Would you say: **Please Read**

- | | |
|------------------------|---|
| a. Excellent | 1 |
| b. Very Good | 2 |
| c. Good | 3 |
| d. Fair | 4 |
| or | |
| e. Poor | 5 |
| Don't have usual place | 6 |
| Don't know/Not sure | 7 |
| Refused | 9 |

Module 7: Preventive Counseling Services

If "yes" to SM7_3 or SM7_4 or SM7_8, or "b-m" on SM7_5, continue, otherwise skip to next module.

The next questions are about counseling services related to prevention that you might have received from a doctor, nurse, or other health professional.

SM13_1. Has a doctor or other health professional ever talked with you about your diet or eating habits? (465)

If yes, ask "About how long ago was it?"	a. Yes, within the past 12 months (1 to 12 months ago)	1
	b. Yes, within the past 3 years (1 to 3 years ago)	2
	c. Yes, 3 or more years ago	3
	d. No	4
	Don't know/Not sure	7
	Refused	9

SM13_2. Has a doctor or other health professional ever talked with you about physical activity or exercise? (466)

If yes, ask "About how long ago was it?"	a. Yes, within the past 12 months (1 to 12 months ago)	1
	b. Yes, within the past 3 years (1 to 3 years ago)	2
	c. Yes, 3 or more years ago	3
	d. No	4
	Don't know/Not sure	7
	Refused	9

SM13_3. (Has a doctor or other health professional ever talked with you) about injury prevention, such as safety belt use, helmet use, or smoke detectors? (467)

If yes, ask "About how long ago was it?"	a. Yes, within the past 12 months (1 to 12 months ago)	1
	b. Yes, within the past 3 years (1 to 3 years ago)	2
	c. Yes, 3 or more years ago	3
	d. No	4
	Don't know/Not sure	7
	Refused	9

SM13_4. (Has a doctor or other health professional ever talked with you) about drug abuse? (468)

If yes, ask "About how long ago was it?"	a. Yes, within the past 12 months (1 to 12 months ago)	1
	b. Yes, within the past 3 years (1 to 3 years ago)	2
	c. Yes, 3 or more years ago	3
	d. No	4
	Don't know/Not sure	7
	Refused	9

SM13_5. (Has a doctor or other health professional ever talked with you) about alcohol use? (469)

If yes, ask "About how long ago was it?"	a. Yes, within the past 12 months (1 to 12 months ago)	1
	b. Yes, within the past 3 years (1 to 3 years ago)	2
	c. Yes, 3 or more years ago	3
	d. No	4
	Don't know/Not sure	7
	Refused	9

If respondent 65 years old or older, go to next module

SM13_6. (Has a doctor or other health professional) ever talked with you about your sexual practices, including family planning, sexually transmitted diseases, AIDS, or the use of condoms? (470)

If yes, ask "About how long ago was it?"	a. Yes, within the past 12 months (1 to 12 months ago)	1
	b. Yes, within the past 3 years (1 to 3 years ago)	2
	c. Yes, 3 or more years ago	3
	d. No	4
	Don't know/Not sure	7
	Refused	9

22. State added: social context

If "yes" to SM7_3 or SM7_4 or SM7_8, or "b-m" on SM7_5, continue, otherwise skip to Next Module

SM14_1	During the past two weeks, did you get together socially with friends, neighbors or any relatives?	(471)
	a. Yes	1
	b. No	2
	Don't know/Not sure	7
	Refused	9
SM14_2	During the past two weeks, did you talk with friends, neighbors, or any relatives on the telephone?	(472)
	a. Yes	1
	b. No	2
	Don't know/Not sure	7
	Refused	9
SM14_3	During the past two weeks, did you go to church, temple, or another place of worship for services or other activities?	(473)
	a. Yes	1
	b. No	2
	Don't know/Not sure	7
	Refused	9
SM14_4	During the past two weeks, did you go to a show or movie, sports event, club meeting, class, or other group event?	(474)
	a. Yes	1
	b. No	2
	Don't know/Not sure	7
	Refused	9
SM14_5	During the past two weeks, did you go out to eat at a restaurant?	(475)
	a. Yes	1
	b. No	2
	Don't know/Not sure	7
	Refused	9
SM14_6	How many days in the past two weeks did you leave your home for any reason?	(476-477)
	a. Number of days (01 - 13)	--
	b. Every day	14
	c. none / Never left	88
	don't know	77
	refused	99
SM14_7	Regarding your present social activities, do you feel that you are doing about enough, too much, or would you like to be doing more?	(478)
	a. About enough	1
	b. too much	2
	c. would like to be doing more	3
	don't know	7
	refused	9

23. State added: diabetes

p/w/diabetes

If core question 12, "Have you ever been told by a doctor that you have diabetes?" is a) yes, otherwise next module.

- SM15_1. How concerned are you about the long term complications of diabetes. Would you say: (607)
 READ 1-4.
 NOTE: THE LONG TERM COMPLICATIONS INCLUDE BLINDNESS, AMPUTATIONS, AND KIDNEY DISEASE.
- | | | |
|---|----------------------|---|
| a | Very concerned | 1 |
| b | Somewhat concerned | 2 |
| c | A little concerned | 3 |
| d | Not concerned at all | 4 |
| | Don't know/Not sure | 7 |
| | Refused | 9 |
- M15_2. Do you agree or disagree with the following statement: The long term complications of diabetes are preventable.
 NOTE: THE LONG TERM COMPLICATIONS INCLUDE BLINDNESS, AMPUTATIONS, AND KIDNEY DISEASE. (608)
- | | | |
|---|---------------------------------------|---|
| a | Strongly agree | 1 |
| b | Somewhat agree | 2 |
| c | Neither agree nor disagree (not read) | 3 |
| d | Strongly disagree | 4 |
| e | Somewhat disagree | 5 |
| | Don't know/Not sure | 7 |
| | Refused | 9 |
- We want to know your views and how you feel about taking care of your diabetes.
- SM15_3. How serious is your diabetes? (609)
- | | | |
|--|---------------------|---|
| | Extremely serious | 1 |
| | Very serious | 2 |
| | Moderately serious | 3 |
| | Slightly serious | 4 |
| | Not at all serious | 5 |
| | Don't know/Not sure | 7 |
| | Refused | 9 |
- SM15_4. How important is following your self-management recommendations such as diet, exercise, and glucose testing for controlling your diabetes? (610)
- | | | |
|---|----------------------|---|
| a | Extremely important | 1 |
| b | Very important | 2 |
| c | Moderately important | 3 |
| d | Slightly important | 4 |
| e | Not at all important | 5 |
| | Don't know/Not sure | 7 |
| | Refused | 9 |

SM15_4a	How much has your doctor or health care provider helped you set clear, specific goals for managing you diabetes. Would you say your doctor or health care provider has been... NOTE: GOALS INCLUDE SETTING TARGETS FOR BLOOD GLUCOSE LEVELS, RESTRICTING YOUR DIET, OR EXERCISING.	(611)
	Very helpful	1
	Somewhat helpful	2
	Not very helpful	3
	Not helpful at all	4
	Don't know/Not sure	7
	Refused	9
SM15_5.	How worried are you about developing complications of diabetes, like eye problems, foot ulcers, or heart attacks?	(612)
	a Extremely worried	1
	b Very worried	2
	c Moderately worried	3
	d Slightly worried	4
	e Not at all worried	5
	Don't know/Not sure	7
	Refused	9
SM15_6.	In the past 12 months, did you cut down on things you usually do, such as going to work or working around the house, because of illness or injury?	(613)
	Yes	1
	No	2 skip to SM15_8
	Don't know/Not sure	7 skip to SM15_8
	Refused skip to	9 skip to SM15_8
SM15_7.	How many days did you cut down on the things you usually do because of illness or injury?	(614-616)
	Days	777
	Don't know/Not sure	777
	Refused	999
SM15_8.	In the past 12 months, did you ever stay in bed because of an illness or injury?	(617)
	Yes	1
	No	2 skip to SM15_10
	Don't know/Not sure	7 skip to SM15_10
	Refused	9 skip to SM15_10
SM15_9.	How many days did you stay in bed because or illness or injury?	(618-620)
	Days	777
	Don't know/Not sure	777
	Refused	999
SM15_10.	How old were you when you were told you have diabetes?	(621-622)
	Years old	76
	76 years or older	76
	Don't know/Not sure	77
	Refused	99

SM15_11. Are you now taking insulin? (623)

a. Yes		1
b. No	skip to SM15_13	2
Don't know/Not sure	skip to SM15_13	7
Refused	skip to SM15_13	9

SM15_12. Currently, about how often do you use insulin? (624-626)

a. Times per day		1 ___
b. Times per week		2 ___
Use insulin pump		333
c. Times per month		3 ___
d. Times per year		4 ___
e. Never		888
Don't know/Not sure		777
Refused		999

SM15_13. About how often do you check your blood for glucose or sugar? Include times when checked by a family member or friend, but do not include times when checked by a health professional. (627-629)

a. Times per day		1 ___
b. Times per week		2 ___
c. Times per month		3 ___
d. Times per year		4 ___
e. Never		888
Don't know/Not sure		777
Refused		999

SM15_13a. During an office visit, has a doctor, nurse, or other health professional ever watched you test your blood sugar? (630)

a. Yes		1
b. No		2
Don't know/Not sure		7
Refused		9

skip to SM15_15 if not insured

Ask QSM15_14 only if Q7 is not equal to 88 and Q7a is not equal to 88.

SM15_14. Does your health insurance coverage pay for all or part of the cost of test strips for home glucose monitoring?
NOTE: HEALTH INSURANCE COVERAGE INCLUDES HEALTH INSURANCE OR GOVERNMENT PLANS SUCH AS MEDICAID, THE OREGON HEALTH PLAN, OR MEDICARE. (631)

a. Yes		1
b. No		2
Don't know/Not sure		7
Refused		9

SM15_15.	Have you ever heard of glycosylated hemoglobin [gli-KOS-ilated he-mo-glo-bin] or hemoglobin "A one C"?	(632)
	a Yes	1
	b No	2
	Don't know/Not sure	7
	Refused	9
SM15_16.	Have you ever heard of a fructosamine determination or fructosamine test?	(633)
	a Yes	1
	b No	2
	Don't know/Not sure	7
	Refused	9
SM15_17.	About how many times in the last year have you seen a doctor, nurse, or other health professional for your diabetes?	(634-635)
	a Times	—
	b None	88
	Don't know/Not sure	77
	Refused	99
	skip to SM15_23	
	skip to SM15_23	
	skip to SM15_23	
	if SM15_16 is 2-9 skip to SM15_20	
	if SM 15_16 is 1 skip to SM15_19	
SM15_18.	About how many times in the last year has a doctor, nurse, or other health professional checked you for glycosylated hemoglobin or hemoglobin "A one C"?	(636-637)
	a Times	—
	b None	88
	Don't know/Not sure	77
	Refused	99
	skip to 15_20	
SM15_19.	About how many times in the last year has a doctor, nurse, or other health professional checked you for fructosamine?	(638-639)
	a Times	—
	b None	88
	Don't know/Not sure	77
	Refused	99
SM15_20.	About how many times in the last year has a health professional asked you about numbness or tingling in your feet?	(640-641)
	a Times	—
	b None	88
	Don't know/Not sure	77
	Refused	99

SM15_21.	About how many times in the last year has a health professional asked you about your foot care such as trimming your toenails or checking for infections?	(642-643)
a	Times	88
b	None	77
	Don't know/Not sure	99
	Refused	
SM15_22.	About how many times in the last year has a health professional checked your feet without your shoes and socks on?	(644-645)
a	Times	88
b	None	77
	Don't know/Not sure	99
	Refused	
SM15_23	When, if ever, was the most recent time that a health professional tested the feeling in your feet or legs by touching you with something and asking if you could feel it?	(646)
a	Within the past 6 months (0 - 6 months ago)	1
b	6-12 months ago	2
c	Within the past 2 years (1 to 2 years ago)	3
d	2 or more years ago	4
	Don't know/Not sure	7
	Never	8
	Refused	9
SM15_24.	When was the last time you had an eye exam in which the pupils were dilated? This would have made you temporarily sensitive to bright light. READ 1-5 ONLY IF NECESSARY	(647)
	Within the past month (0 to 1 month ago)	1
	Within the past year (1 to 12 months ago)	2
	Within the past 2 years (1 to 2 years ago)	3
	2 or more years ago	4
	Don't know/Not sure	7
	Never	8
	Refused	9
SM15_25.	Have you ever attended any formal diabetes education programs such as a class or one-on-one training with a diabetes educator?	(648)
a.	Yes	1
b.	No	2
	Don't know/Not sure	7
	Refused	9
	skip to SM15_27	
	skip to SM15_27	
	skip to SM15_27	

- SM15_26. When was the last time you took a diabetes education class or training? (649)
- | | |
|--|---|
| Within the past year (1 to 12 months ago) | 1 |
| Within the past 3 years (1 to 3 years ago) | 2 |
| Within the past 5 years (3 to 5 years ago) | 3 |
| Within the past 10 years (5 to 10 years ago) | 4 |
| 10 or more years ago | 5 |
| Don't know/Not sure | 7 |
| Refused | 9 |
- skip to SM15_29 if not insured (Q5 > 1 and Q7 = 88)
- SM15_27. Does your current health insurance coverage pay for all or part of the cost of diabetes education programs? NOTE: HEALTH INSURANCE COVERAGE INCLUDES HEALTH INSURANCE OR GOVERNMENT PLANS SUCH AS MEDICAID, THE OREGON HEALTH PLAN, OR MEDICARE. (650)
- | | |
|---------------------|---|
| a. Yes | 1 |
| b. No | 2 |
| Don't know/Not sure | 7 |
| Refused | 9 |
- SM15_29. Are you taking aspirin daily or every other day in order to reduce your risk of heart disease or other disease? (652)
- | | |
|---------------------|---|
| a. Yes | 1 |
| b. No | 2 |
| Don't know/Not sure | 7 |
| Refused | 9 |
- SM15_30. Have you ever been told by a doctor, nurse, or other health professional that you have high blood pressure? (653)
- | | |
|---------------------|---|
| a. Yes | 1 |
| b. No | 2 |
| Don't know/Not sure | 7 |
| Refused | 9 |
- SM15_31. Blood cholesterol is a fatty substance found in the blood. Have you ever had your blood cholesterol checked? (654)
- | | |
|---------------------|---|
| a. Yes | 1 |
| b. No | 2 |
| Don't know/Not sure | 7 |
| Refused | 9 |
- SM15_32. About how long has it been since you last had your blood cholesterol checked? READ 1-4 ONLY IF NECESSARY (655)
- | | |
|---|---|
| a. Within the past year (1 to 12 months ago) | 1 |
| b. Within the past 2 years (1 to 2 years ago) | 2 |
| c. Within the past 5 years (2 to 5 years ago) | 3 |
| d. 5 or more years ago | 4 |
| Don't know/Not sure | 7 |
| Refused | 9 |

SM15_33.	Have you ever been told by a doctor or other health professional that your blood cholesterol is high?	(656)
	a. Yes	1
	b. No	2
	Don't know/Not sure	7
	Refused	9
SM15_34.	About how long has it been since you last visited a dentist or hygienist? READ	(657)
	A-E ONLY IF NECESSARY.	
	a Within the past year (1 to 12 months ago)	1
	b Within the past 2 years (1 to 2 years ago)	2
	c Within the past 3 years (2 to 3 years ago)	3
	d Within the past 5 years (3 to 5 years ago)	4
	e 5 or more years ago	5
	Don't know/Not sure	7
	Refused	9

SM16_ State added module: Pneumonia and Influenza

SM16_1	During the past 12 months, have you had a flu shot?		(696)
	a. yes		1
	b. no		2
	don't know/unsure		7
	refused		9
	If not diabetic (Q12 is not equal to 1) skip to SM16_6.		
	If less than 65 years old (Q44 is less than 65) skip to SM16_16.		
	If not insured (Q7 = 88 or Q7a = 88) skip to SM16_3.		
SM16_2.	As far as you know, does your health care coverage pay for the total cost of a flu shot?		(697)
	a. yes		1
	b. no		2
	don't know/unsure		7
	refused		9
SM16_3.	My next few questions are about vaccines <u>other</u> than the flu shot. Are you aware of any other vaccines that doctors recommend for people 65 and older?		(698)
	a. yes		1
	b. no	<i>go to SM16_5</i>	2
	don't know/unsure	<i>go to SM16_5</i>	7
	refused	<i>go to SM16_5</i>	9
SM16_4	What other vaccines are you aware of? <i>[Probe "any other" twice OR until R replies "none"].</i>		(699-701)
	(699) pneumonia/ pneumococcal		1
	(700) tetanus/ tetanus-diphtheria		1
	(701) any other mention (or multiple other mentions)		1
	[If column 699 is coded 1 , code SM16_5 as '1' and go to SM16_6]		
SM16_5.	Have you ever heard of a vaccine for pneumonia [<i>noo-MOAN-yuh</i>]? It is also called the pneumococcal [<i>noo-mo-KOK-uhl</i>] vaccine or pneumovax [<i>NOO-mo-vaks</i>].		(702)
	a. yes		1
	b. no	<i>go to SM16_13</i>	2
	don't know/unsure	<i>go to SM16_13</i>	7
	refused	<i>go to SM16_13</i>	9
SM16_6.	Have you ever had a pneumonia vaccination?		(703)
	a. yes		1
	b. no	<i>go to SM16_8</i>	2
	don't know/unsure	<i>go to SM16_8</i>	7
	refused	<i>go to SM16_8</i>	9
	If Q 44 on age < 65 and Q12 is not 1 skip to <u>END</u>.		

M16_7.	About how long has it been since you had a pneumonia vaccination?	(704-705)
a.	Number of years	--
	don't know/unsure	77
	refused	99
	If not insured (Q7 or Q7a = 88) skip to SM16_9.	
M16_8.	As far as you know, does your health care coverage pay for the total cost of a pneumonia vaccination?	(706)
a.	yes	1
b.	no	2
	don't know/unsure	7
	refused	9
M16_9	Now think about the different ways you may have heard about pneumonia vaccinations. Did you hear about it through a nurse?	(707)
a.	yes	1
b.	no	2
	don't know/unsure	7
	refused	9
SM16_10	[if SM16_9 = 1] Other than a doctor or nurse, where else have you heard about the pneumonia vaccination? [if SM16_9 not equal to 1] Where have you heard about the pneumonia vaccination? [don't read response options]	(708-709: 1st mention) (710-711: 2nd mention) (712-713: 3rd mention)
a.	friend or family member	01
b.	newspaper or magazine	02
c.	pamphlet/ brochure	03
d.	poster or billboard	04
e.	radio	05
f.	TV	06
g.	none	07
h.	other source [specify] -->100 characters open ended alpha	08
	don't know/unsure	77
	refused	99

[If SM16_6 = 1, go to SM16_11. If SM16_6 not equal to 1 go to SM16_12]

SM16_11. Now think over all the sources where you have heard about the pneumonia vaccination. Which source had the biggest influence in your decision to get the vaccination? *[don't read response options]*

	(714-715)
a. doctor	01
b. friend or family member	02
c. newspaper or magazine	03
d. nurse	04
e. pamphlet/ brochure	05
f. poster or billboard	06
g. radio	07
h. TV	08
i. other <i>[specify]</i> -->300 characters open ended alpha	87
don't know/unsure	77
refused	99

[Skip to SM16_13]

SM16_12 There are many reasons why people do not get the pneumonia vaccination, and we are trying to understand these reasons. What would you say have been your main reasons for not getting a pneumonia vaccination?
[Don't read response options.

First Propt: What other reasons did you have?

Second Propt: What else?

	(716-717: 1st mention)	(718-719: 2nd mention)	(720-721: 3rd mention)
a. doctor/nurse never suggested it			01
b. I haven't thought about it			02
c. I haven't thought about it			03
d. I'm in good health/ not at risk (e.g.: don't get sick, never had pneumonia, don't need it)			04
e. it might make you sick/ might be side effects or adverse reactions			05
f. vaccine is not effective (e.g.: vaccine doesn't work/ wouldn't help)			06
g. other source <i>[specify]</i> -->300 characters open ended alpha			08
don't know/unsure			77
refused			99

SM16_13 Now I'm going to read a few statements and ask how much you agree or disagree with them. For each statement please tell me if you strongly agree, somewhat agree, somewhat disagree, or strongly disagree. Here's the first statement. *[pause]*
Pneumonia is a dangerous health condition.
Would you say you *[Read]*

	(722)
a. strongly agree	1
b. somewhat agree	2
c. neither agree nor disagree	3
d. somewhat disagree, or	4
e. strongly disagree	5
don't know/unsure	7
refused	9

Do not read

SM16_14.	People 65 and older are more likely to get pneumonia than people who are younger. Would you say you <i>[Read]</i>	(723)
	a. strongly agree	1
	b. somewhat agree	2
Do not read	c. neither agree nor disagree	3
	d. somewhat disagree, or	4
	e. strongly disagree	5
	don't know/unsure	7
	refused	9
SM16_15.	Vaccinations are an effective way for adults to avoid some types of illness. Would you say you <i>[Read]</i>	(724)
	a. strongly agree	1
	b. somewhat agree	2
Do not read	c. neither agree nor disagree	3
	d. somewhat disagree, or	4
	e. strongly disagree	5
	don't know/unsure	7
	refused	9
SM16_16.	Pneumonia is an extremely rare illness. <i>[if necessary-->]</i> Would you say you <i>[Read]</i>	(725)
	a. strongly agree	1
	b. somewhat agree	2
Do not read	c. neither agree nor disagree	3
	d. somewhat disagree, or	4
	e. strongly disagree	5
	don't know/unsure	7
	refused	9
SM16_17.	In terms of how sick someone gets, having pneumonia is about the same as having a bad cold . <i>[if necessary-->]</i> Would you say you <i>[Read]</i>	{726}
	a. strongly agree	1
	b. somewhat agree	2
Do not read	c. neither agree nor disagree	3
	d. somewhat disagree, or	4
	e. strongly disagree	5
	don't know/unsure	7
	refused	9

SM16_18. Getting a pneumonia vaccination lowers a person's chance of getting pneumonia.
[if necessary-->]Would you say you [Read]

		(727)
	a. strongly agree	1
	b. somewhat agree	2
Do not read	c. neither agree nor disagree	3
	d. somewhat disagree, or	4
	e. strongly disagree	5
	don't know/unsure	7
	refused	9

IRB follow-up module

Do Not Ask Until IRB Approved - Use As Space Holder

M17_1 From the time to time, the Oregon Health Division conducts other health related surveys. We would like to be able to call you back at a later time to participate in special studies or to help us test new questions. If you agree to this we will keep your phone number on file separate from the answers collected today. If we call you back you can make the decision to participate in the particular study at that time.

Would it be okay if we called you back to ask additional questions at a later time? (737)

A.	Yes		1
B.	No	Go to closing statement	2
	Not sure	Go to closing statement	7

M17_2 If we call you back we will identify ourselves and ask to speak to the _____ (738-739)
{replaced with position in household grid and gender}

Closing Statement

That's my last question. Everyone's answers will be combined to give us information about the health practices of people in this state. Thank you very much for your time and cooperation.

The following are operational codes in data collection;

Full telephone number if respondent answered yes to SM17_1

Area code	(3 digits)	(740-742)
Phone number	(7 digits)	(743-749)

Sampling Interval

1+ bank	1	(5)
0 Bank	4	

Record ID	include on openended file also	6 digits	(750-755)
-----------	--------------------------------	----------	-----------

Length of interview	2 digits	(756-757)
---------------------	----------	-----------

Refusal conversion	1 digit	(758)
--------------------	---------	-------

Interview done in spanish language	1 digit	(759)
------------------------------------	---------	-------

If multiple survey which survey is this? (job #)		(760)
--	--	-------

Survey A	1
Survey B	2
Survey C	3

9 digit code to form unique record number = job number + month of interview + record ID	(761-768)
---	-----------

Blank to end of file for add on questions during year	(769-780)
---	-----------

Appendix B

Table 1. Health care coverage, self-rated health and health behaviors by racial and ethnic categories of study subjects: Multnomah County Jail Health Study, 1999

	Caucasian	African-American	American Indian	Other*	Total
Health care coverage during year prior to incarceration					
Yes	70 (55.1)	30 (63.8)	12 (63.2)	2 (33.3)	114 (57.3%)
No	57 (44.9)	17 (36.2)	7 (36.8)	4 (66.6)	85 (42.7)
Types of health care insurance among those covered					
Provided by own employer	4 (5.7)	3 (10)	3 (25)	0 (0)	10 (8.8%)
Provided by someone else's employer	6 (8.6)	3 (10)	0 (0)	0 (0)	9 (7.9)
Medicare	1 (1.4)	0 (0)	0 (0)	0 (0)	1 (0.9)
Medicaid or OHP	59 (84.3)	23 (76.7)	6 (50)	2 (100)	90 (78.9)
Indian Health Service	0 (0)	1 (3.3)	3 (25)	0 (0)	4 (3.5)
Self-rated general health					
Excellent	14 (11.0)	5 (10.6)	4 (21.1)	1 (16.7)	24 (12.1%)
Very good	35 (27.6)	5 (10.6)	2 (10.5)	1 (16.7)	43 (21.6)
Good	42 (33.1)	23 (48.9)	7 (36.8)	1 (16.7)	73 (36.7)
Fair	27 (21.3)	12 (25.5)	5 (26.3)	2 (33.3)	46 (23.1)
Poor	9 (7.1)	2 (4.3)	1 (5.3)	1 (16.7)	13 (6.5)
Smoker					
Yes	99 (78)	31 (66)	10 (52.6)	6 (100)	146 (73.4%)
No	28 (22)	16 (34)	9 (47.4)	0 (0)	53 (26.6)
Last visit to doctor					
Within past year	81 (63.8)	36 (76.6)	17 (89.5)	1 (16.7)	135 (67.8%)
Within past 2 years	19 (15)	5 (10.6)	1 (5.3)	2 (33.3)	27 (13.6)
Within past 5 years	17 (13.4)	3 (6.4)	1 (5.3)	3 (50.0)	24 (12.1)
5 or more years	10 (7.9)	3 (6.4)	0 (0)	0 (0)	13 (6.5)
Last visit to dentist					
Within past year	64 (50.4)	25 (53.2)	11 (57.9)	2 (33.3)	102 (51.3%)
Within past 2 years	22 (17.3)	5 (10.6)	4 (21.1)	0 (0)	31 (15.6)
Within past 5 years	26 (20.5)	10 (21.3)	2 (10.5)	2 (33.3)	40 (20.1)
5 or more years	15 (11.8)	7 (14.9)	2 (10.5)	2 (33.3)	26 (13.1)

* Other includes Asian and Hispanic women

Table 2. Current charge and history of previous incarcerations by racial and ethnic categories of study subjects: Multnomah County Jail Health Study, 1999

	Caucasian	African-American	American Indian	Other	Total
Current charge					
Drug possession	26 (20.5)	10 (21.3)	4 (21.1)	3 (50.0)	43 (21.6)
Drug sale	2 (1.6)	1 (2.1)	0 (0)	0 (0)	3 (1.5)
Shoplifting	1 (.8)	0 (0)	0 (0)	0 (0)	1 (.5)
Prostitution	5 (3.9)	0 (0)	1 (5.3)	0 (0)	6 (3)
Assault	2 (1.6)	5 (10.6)	0 (0)	0 (0)	7 (3.5)
Robbery	4 (3.1)	2 (4.3)	2 (10.5)	0 (0)	8 (4)
Parole/probation violation	67 (52.8)	21 (44.7)	9 (47.4)	3 (50.0)	100 (50.3)
Other	20 (15.7)	8 (17)	3 (15.8)	0 (0)	31 (15.6)
Ever incarcerated before					
Yes	105 (82.7)	46 (97.9)	17 (89.5)	6 (100)	174 (87.4)
No	22 (17.3)	1 (2.1)	2 (10.5)	0 (0)	25 (12.6)
Number times previously incarcerated					
0	16 (12.6)	0 (0)	0 (0)	0 (0)	16 (8)
1-4	50 (39.4)	22 (46.8)	8 (42.2)	4 (66.6)	84 (42.2)
5-9	23 (18)	8 (17)	4 (21.1)	2 (33.3)	37 (18.5)
10+	38 (30)	17 (36.2)	7 (36.7)	0 (0)	62 (31.1)

Table 3. Sexual behaviors by racial and ethnic categories of study subjects: Multnomah County Jail Health Study, 1999

	Caucasian	African-American	American Indian	Other	Total
Have sex mostly with					
Men	109 (85.8)	41 (87.2)	17 (89.5)	5 (83.3)	172 (86.4%)
Women	6 (4.7)	5 (10.6)	1 (5.3)	0 (0)	12 (6.0)
Both men and women	12 (9.4)	1 (2.1)	1 (5.3)	1 (16.7)	15 (7.5)
Sexually active within past year					
Yes	117 (92.1)	40 (85.1)	17 (89.5)	6 (100)	180 (90.5%)
No	10 (7.9)	7 (14.9)	2 (10.5)	0 (0)	19 (9.5)
Number of sex partners in past year					
0	9 (7.1)	6 (12.8)	2 (10.5)	0 (0)	17 (8.5%)
1-4	89 (70.1)	35 (74.4)	13 (68.5)	4 (66.6)	141 (70.8)
5-9	4 (3.2)	3 (6.4)	2 (10.5)	1 (16.7)	10 (5.0)
10+	25 (19.7)	3 (6.4)	2 (10.5)	1 (16.7)	19 (15.5)
Condom used last sexual intercourse					
Yes	40 (31.5)	18 (38.3)	8 (42.1)	2 (33.3)	68 (34.2%)
No	87 (68.5)	29 (61.7)	11 (57.9)	4 (66.6)	131 (65.8)
Traded sex for money or drugs					
Yes	54 (42.5)	22 (46.8)	7 (36.8)	1 (16.7)	84 (42.2)
No	73 (57.5)	25 (53.2)	12 (63.2)	5 (83.3)	115 (57.8)

Table 4. History of drug and alcohol use by racial and ethnic categories of study subjects: Multnomah County Jail Health Study, 1999

	Caucasian	African-American	American Indian	Other	Total
Alcohol					
Ever use	121 (95.3)	46 (97.9)	18 (94.7)	6 (100)	191 (96)
Never use	6 (4.7)	1 (2.1)	1 (5.3)	0 (0)	8 (4)
Use during month prior to arrest	58 (47.9)	27 (58.7)	13 (72.2)	3 (50.0)	101 (52.9)
No use in month prior to arrest	63 (52.1)	19 (41.3)	5 (27.8)	3 (50.0)	90 (47.1)
Marijuana					
Ever use	119 (93.7)	41 (87.2)	18 (94.7)	5 (83.3)	183 (92)
Never use	8 (6.3)	6 (12.8)	1 (5.3)	1 (16.7)	16 (8)
Use during month prior to arrest	42 (35.3)	9 (22)	3 (75)	1 (16.7)	55 (30.1)
No use in month prior to arrest	77 (64.7)	32 (78)	15 (83.3)	4 (66.6)	128 (69.9)
Cocaine					
Ever use	103 (81.1)	32 (68.1)	17 (89.5)	6 (100)	158 (79.4)
Never use	24 (18.9)	15 (31.9)	2 (10.5)	0 (0)	41 (20.6)
Use during month prior to arrest	23 (22.3)	11 (34.4)	4 (23.5)	3 (50.0)	41 (25.9)
No use in month prior to arrest	80 (77.7)	21 (65.6)	13 (76.5)	3 (50.0)	117 (74.1)
Crack					
Ever use	86 (67.7)	33 (70.2)	15 (78.9)	5 (83.3)	139 (69.8)
Never use	41 (32.3)	14 (29.8)	4 (21.1)	1 (16.7)	60 (30.2)
Use during month prior to arrest	29 (33.7)	18 (54.5)	5 (33.3)	2 (33.3)	54 (38.8)
No use in month prior to arrest	57 (66.3)	15 (45.5)	10 (66.7)	3 (50)	85 (61.2)
Heroin/opiates					
Ever use	59 (46.5)	9 (19.1)	14 (73.7)	3 (60)	85 (42.7)
Never use	68 (53.5)	38 (80.9)	5 (26.3)	3 (40)	114 (57.3)
Use during month prior to arrest	27 (45.8)	4 (44.4)	8 (57.1)	2 (66.7)	41 (48.2)
No use in month prior to arrest	32 (54.2)	5 (55.6)	6 (42.9)	1 (33.3)	44 (51.8)
Amphetamines					
Ever use	94 (74)	7 (14.9)	12 (63.2)	4 (60)	117 (58.8)
Never use	33 (26)	40 (85.1)	7 (36.8)	2 (40)	82 (41.2)
Use during month prior to arrest	44 (46.8)	0 (0)	4 (33.3)	2 (33.3)	50 (42.7)
No use in month prior to arrest	50 (53.2)	7 (100)	8 (66.7)	2 (66.7)	67 (57.3)
Hallucinogen					
Ever use	70 (55.1)	8 (17)	12 (63.2)	3 (60)	93 (46.7)
Never use	57 (44.9)	39 (83)	7 (36.8)	3 (40)	106 (53.3)
Use during month prior to arrest	2 (2.9)	0 (0)	0 (0)	0 (0)	2 (2.9)
No use in month prior to arrest	68 (97.1)	8 (100)	12 (100)	3 (100)	91 (97.8)

Table 4 (continued). History of drug and alcohol use by racial and ethnic categories of study subjects: Multnomah County Jail Health Study, 1999

	Caucasian	African-American	American Indian	Other	Total
Barbiturate					
Ever use	35 (27.6)	6 (12.8)	6 (31.6)	3 (60)	50 (25.1)
Never use	92 (72.4)	41 (87.2)	13 (68.4)	3 (40)	149 (74.9)
Use during month prior to arrest	2 (5.7)	0 (0)	1 (16.7)	1 (33.3)	4 (8)
No use in month prior to arrest	33 (94.3)	6 (100)	5 (83.3)	2 (66.7)	46 (92)
Methadone					
Ever use	29 (22.8)	1 (2.1)	5 (26.3)	4 (80)	39 (19.6)
Never use	98 (77.2)	46 (97.9)	14 (73.7)	2 (20)	160 (80.4)
Use during month prior to arrest	8 (27.6)	0 (0)	1 (20)	0 (0)	9 (23.1)
No use in month prior to arrest	21 (72.4)	1 (100)	4 (80)	4 (100)	30 (76.9)
Ever use intravenous drugs					
Yes	80 (63)	9 (19.1)	13 (68.4)	3 (60)	105 (52.8)
No	47 (37)	38 (80.9)	6 (31.6)	3 (40)	94 (47.2)
Ever share needles during IDU					
Yes	44 (55)	5 (55.6)	6 (53.8)	3 (100)	59 (56.2)
No	36 (45)	4 (44.4)	6 (46.2)	0 (0)	46 (43.8)

Table 5. History of physical and sexual abuse by racial and ethnic categories of study subjects: Multnomah County Jail Health Study, 1999

	Caucasian	African-American	American Indian	Other	Total
History of physical abuse					
Yes	106 (84.1)	31 (66)	15 (78.9)	5 (80)	157 (79.3)
No	20 (15.9)	16 (34)	4 (21.1)	1 (20)	41 (20.7)
History of sexual abuse					
Yes	93 (73.8)	25 (53.2)	12 (63.2)	4 (60)	134 (67.7)
No	33 (26.2)	22 (46.8)	7 (36.8)	2 (40)	64 (32.2)

Table 6. Awareness and use of health care services offered by Multnomah County Corrections Health by racial and ethnic categories of study subjects: Multnomah County Jail Health Study, 1999

	Caucasian	African-American	American Indian	Other	Total
General health services					
Aware of	97 (76.4)	34 (72.3)	16 (84.2)	4 (60)	151 (75.9)
Not aware of	30 (23.6)	13 (27.7)	3 (15.8)	2 (40)	48 (24.1)
Ever use					
Ever use	62 (63.9)	18 (52.9)	10 (62.5)	2 (66.7)	92 (60.9)
Never use	35 (36.1)	16 (47.1)	6 (37.5)	2 (33.3)	59 (39.1)
Gynecological health services					
Aware of	52 (40.9)	16 (34)	11 (57.9)	2 (20)	81 (40.7)
Not aware of	75 (59.1)	31 (66)	8 (42.1)	4 (80)	118 (59.3)
Ever use					
Ever use	31 (59.6)	7 (43.8)	6 (54.5)	1 (100)	45 (55.6)
Never use	21 (40.4)	9 (56.3)	5 (45.5)	1 (0)	36 (44.4)
Mental health services					
Aware of	78 (61.4)	24 (51.1)	17 (89.5)	3 (40)	122 (61.3)
Not aware of	49 (38.6)	23 (48.9)	2 (10.5)	3 (60)	77 (38.7)
Ever use					
Ever use	33 (42.3)	7 (29.2)	5 (29.4)	1 (50)	46 (37.7)
Never use	45 (57.7)	17 (70.8)	12 (70.6)	2 (50)	76 (62.3)