

RECEIVED

APR 3 1962

UNIVERSITY OF OREGON
MEDICAL SCHOOL LIBRARY

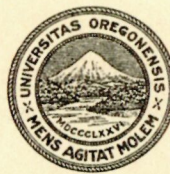


*"... 75 years of
educational progress"*

R737
066s
1962

UNIVERSITY of OREGON MEDICAL SCHOOL
PORTLAND I, OREGON

MEDICAL SCHOOL



LIBRARY

Presented by



Seventy-five years ago this June eight young doctors borrowed one thousand dollars to buy a two-room frame building. They borrowed a sliver of ground at 23rd and Marshall streets from Good Samaritan hospital and opened the original Medical department of the University of Oregon.

With this first shaky step the infant school began a journey which was to surpass the wildest fancies of its founders.

Today the University of Oregon Medical School is a vigorous young giant among the nation's great academic and research centers. Standing astride 101 acres of the green hills rimming Portland's west hills, the campus will encompass 13 buildings when the \$2, 500, 000 Medical Research Laboratory is completed this year.

The Medical School's physical assets alone total over \$22 million, the operating budget for 1961-62 is \$9, 400, 000, and with gift and grant funds, brings the total to nearly \$12 million.

The worth of those intangible assets....the thousands of doctors and nurses graduated from the University of Oregon Medical School....the millions of patients aided....the contributions to medical science from the institution's research programs....these assets are beyond calculation.

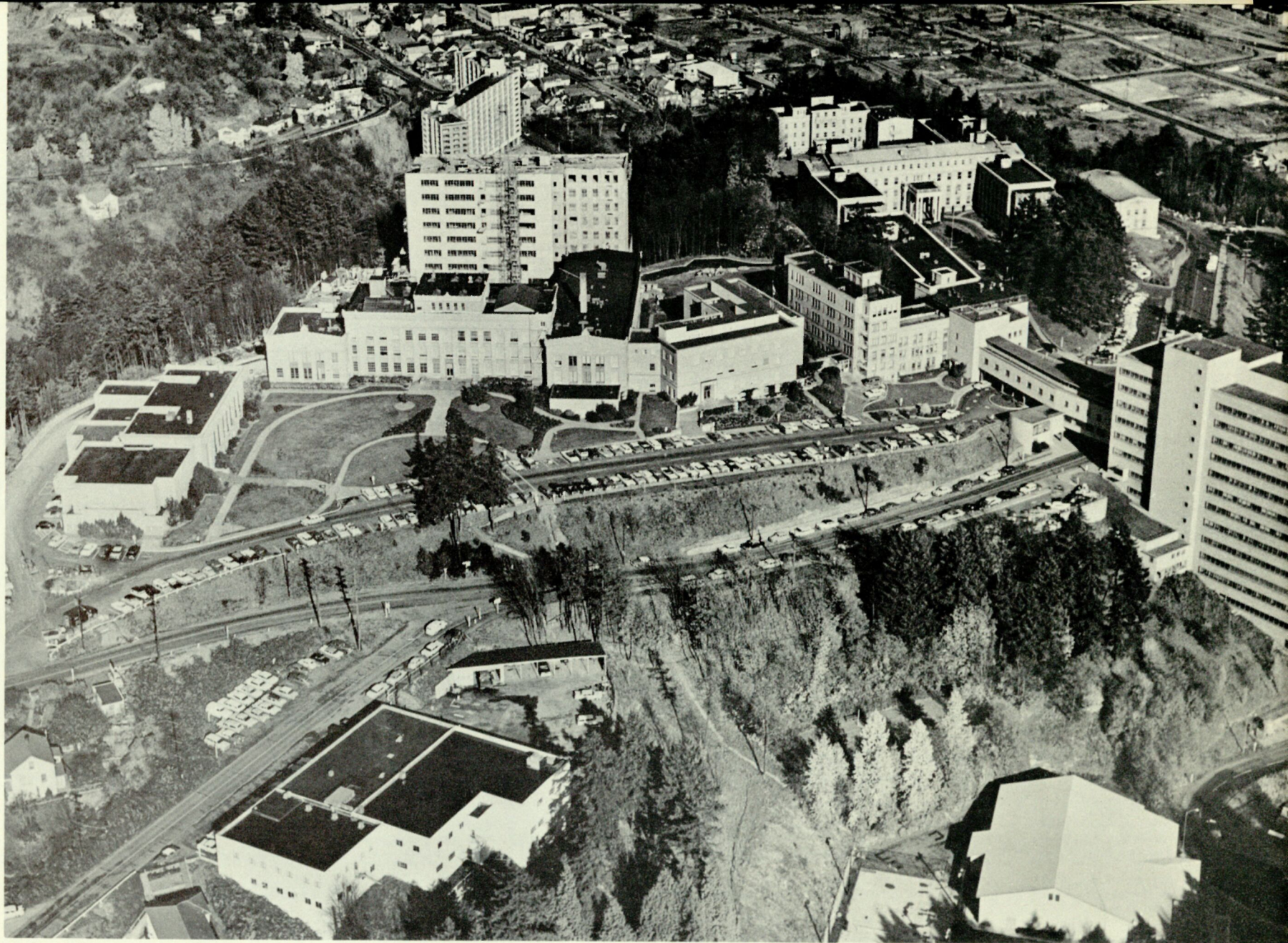


R737

066s

1962

PNW
Archives



December—1961

Campus --- UNIVERSITY OF OREGON MEDICAL SCHOOL PORTLAND, OREGON

TOTAL STUDENT ENROLLMENT*

(Cumulative...In Credited Courses)

Oregon State System of Higher Education 1949-1961

*Includes:

- University of Oregon
- Oregon State College
- University of Oregon Medical School
- University of Oregon Dental School
- Oregon College of Education
- Southern Oregon College
- Eastern Oregon College
- Portland State College
- Oregon Technical Institute



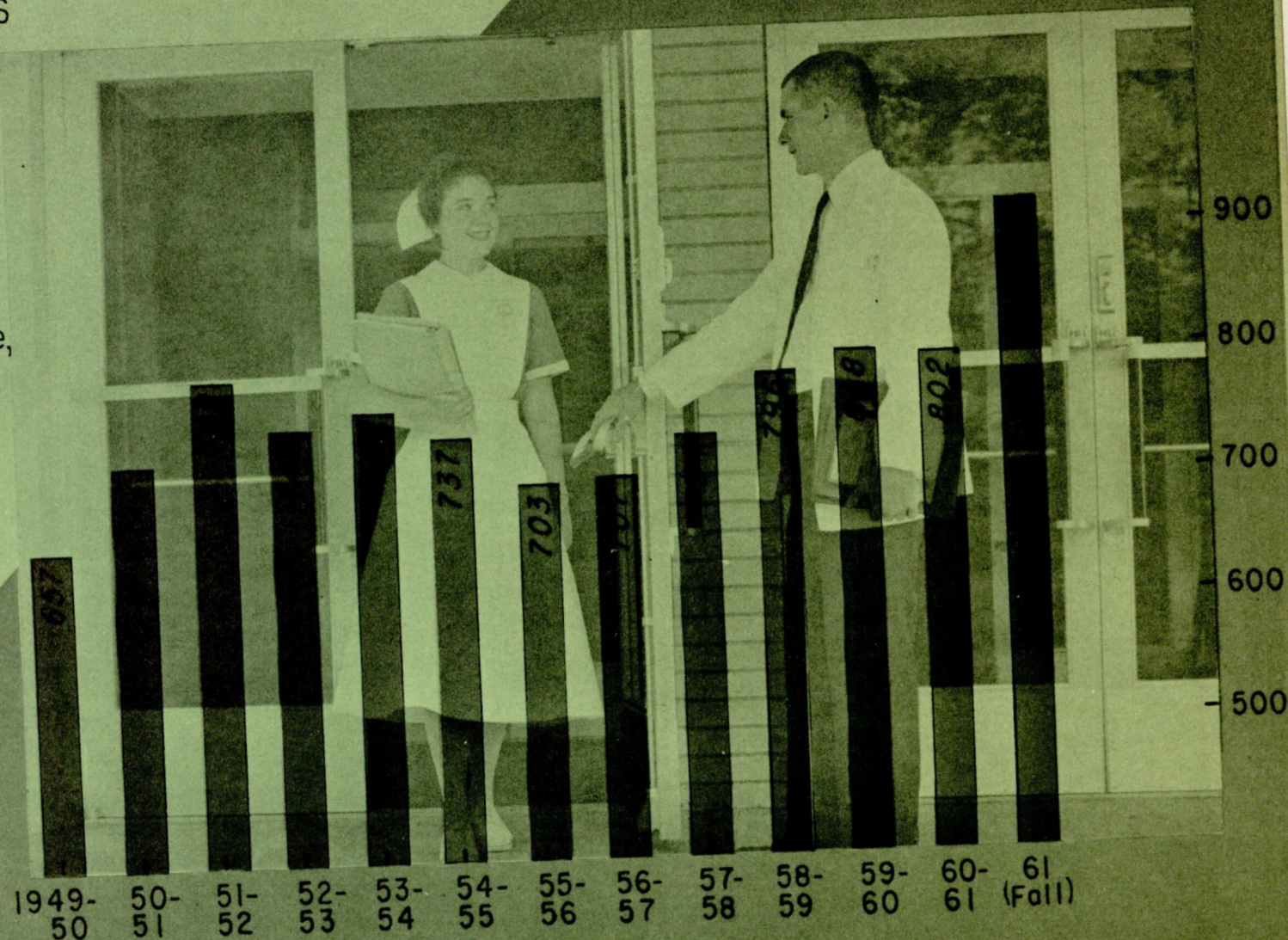
TOTAL STUDENT ENROLLMENT*

University of Oregon Medical School 1949-1961

Source: Registrar, UOMS

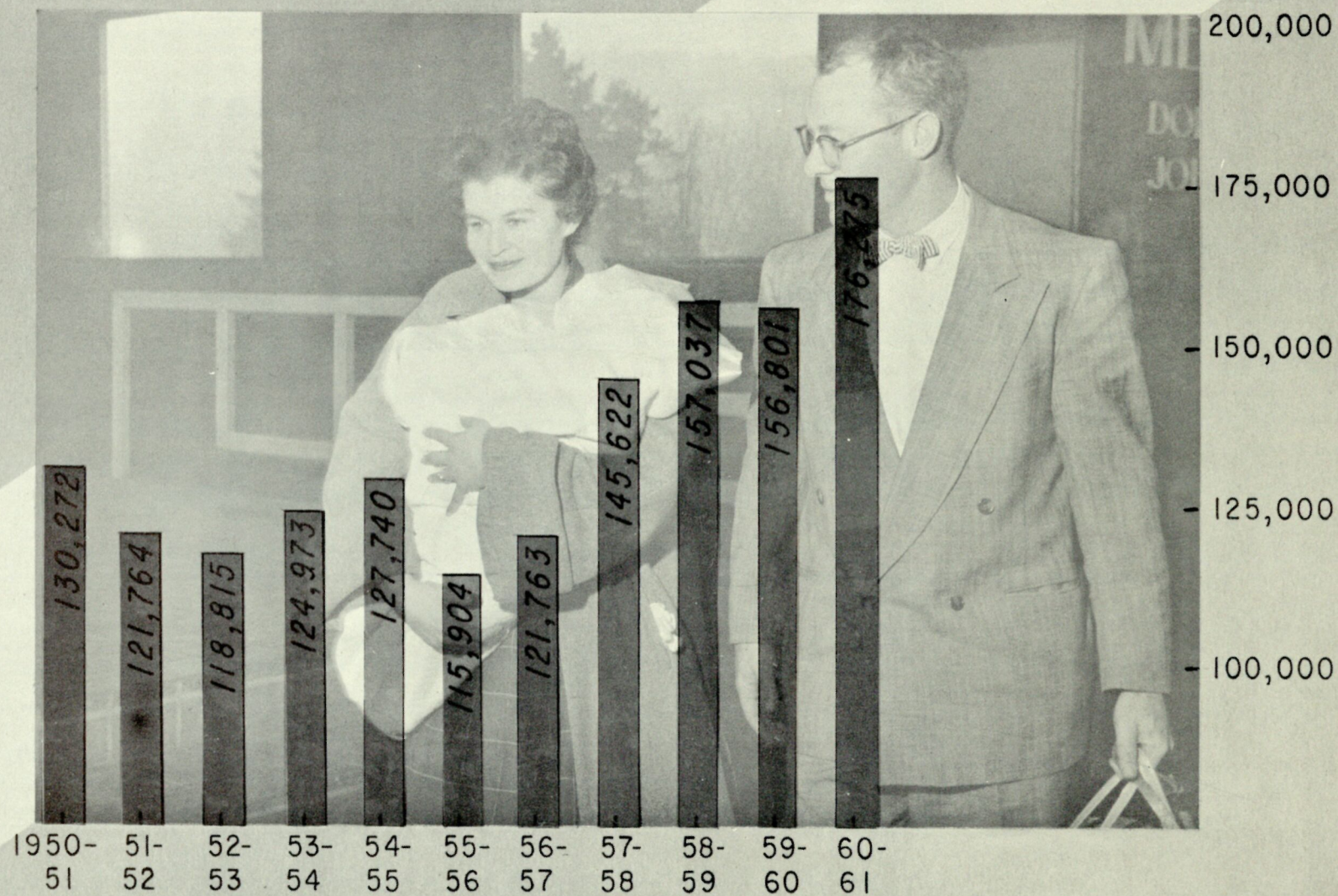
*Includes:

- medical students
- graduate & special students
- undergraduate, graduate, affiliate nursing students
- interns
- residents
- dietetic interns
- medical technologists
- x-ray technicians



OUTPATIENT CLINIC VISITS

University of Oregon Medical School 1950-61



HOSPITAL PATIENT ADMISSIONS

University of Oregon Medical School

- Doernbecher Memorial Hospital for Children
- Multnomah Hospital
- University State Tuberculosis Hospital
- University of Oregon Medical School Hospital
(Opened 1956)



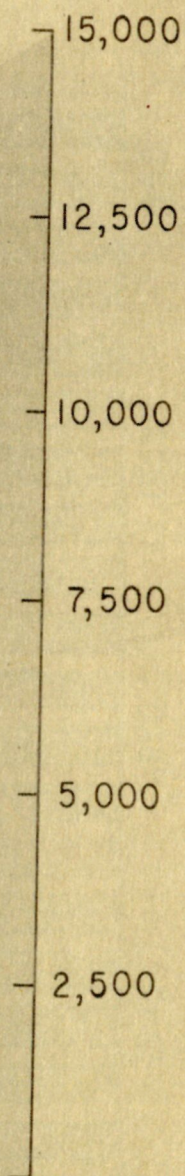
7,904

1950-51



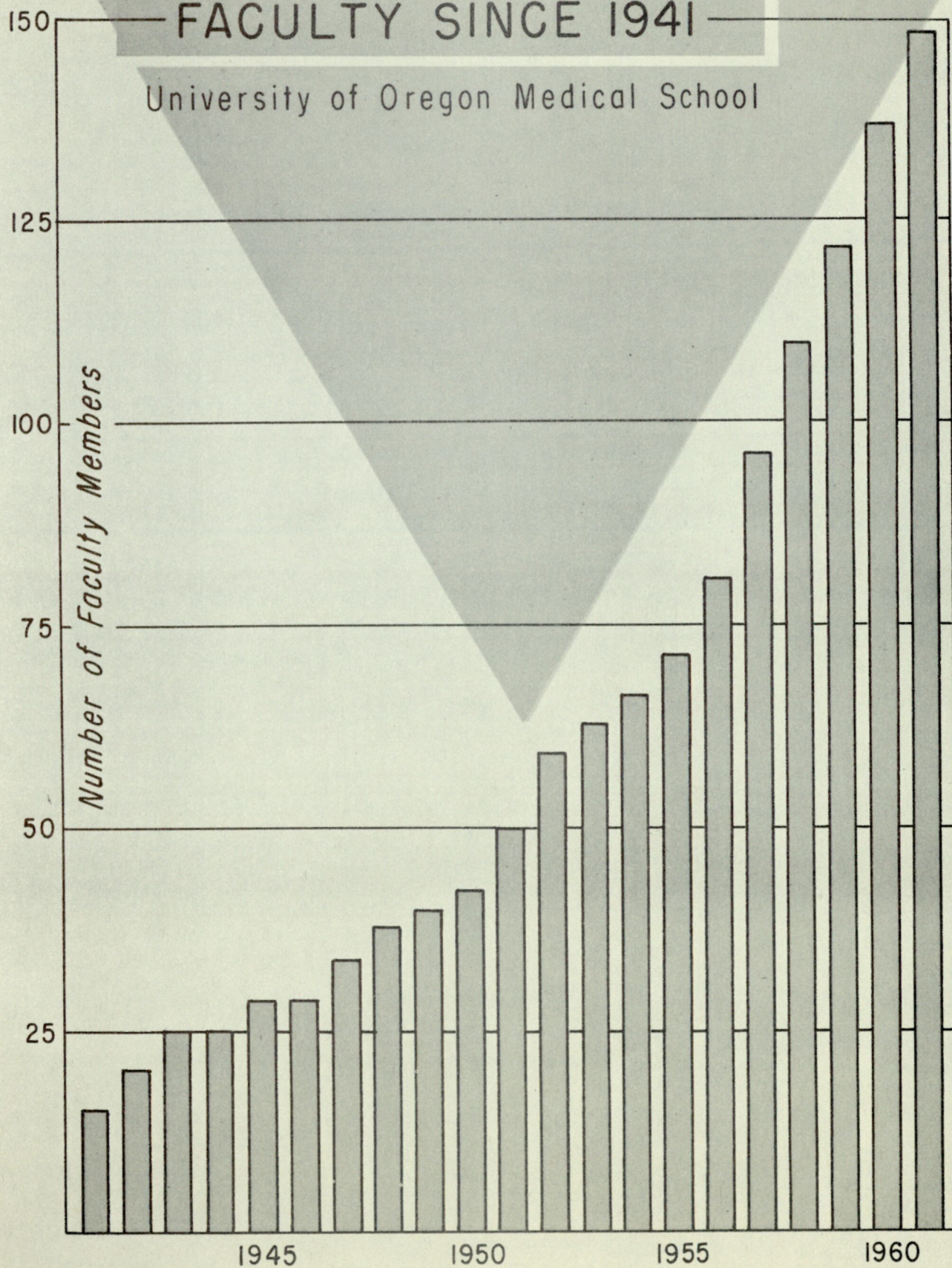
12,954

1960-61

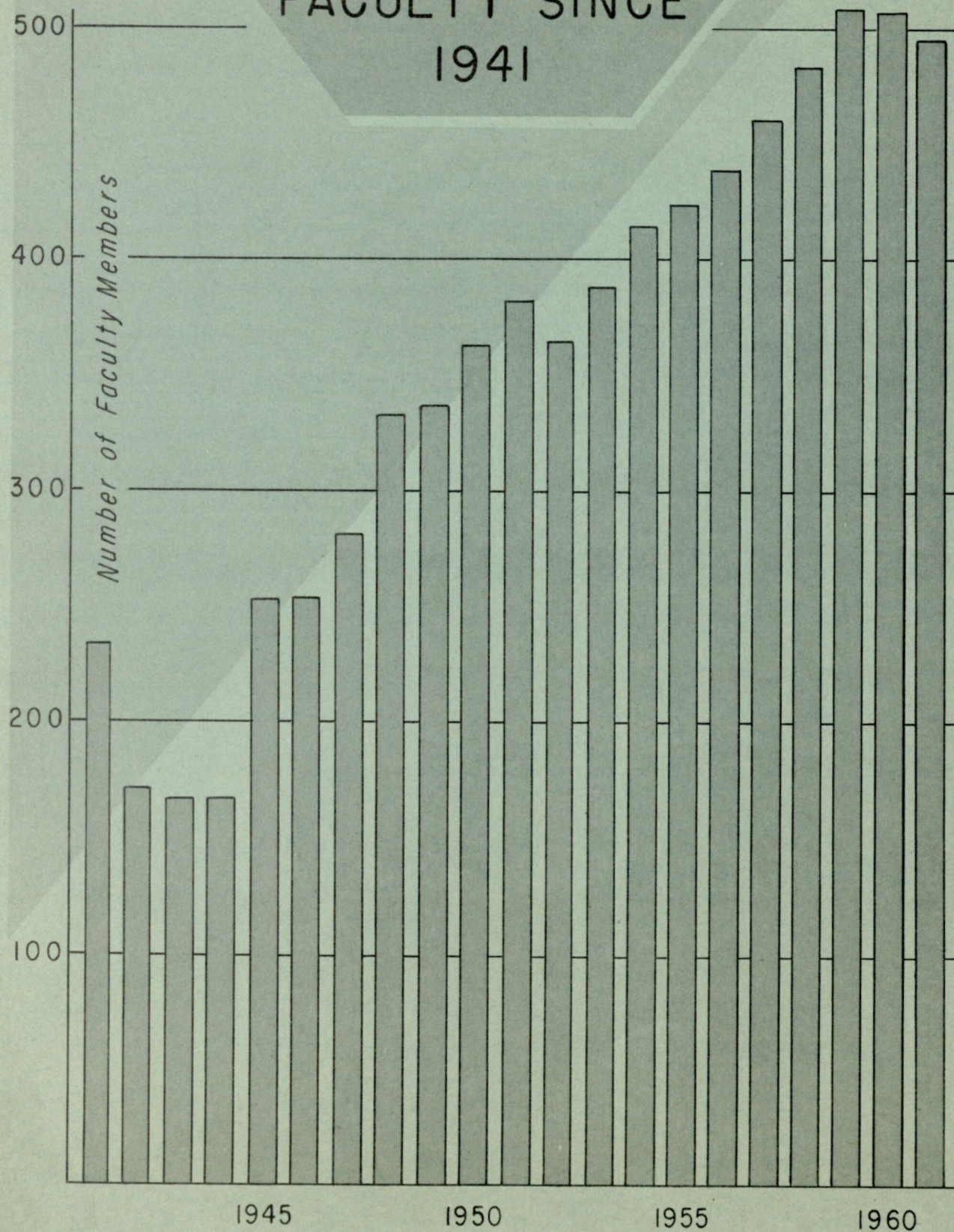


GROWTH OF FULL-TIME FACULTY SINCE 1941

University of Oregon Medical School



GROWTH OF PART-TIME AND VOLUNTEER FACULTY SINCE 1941



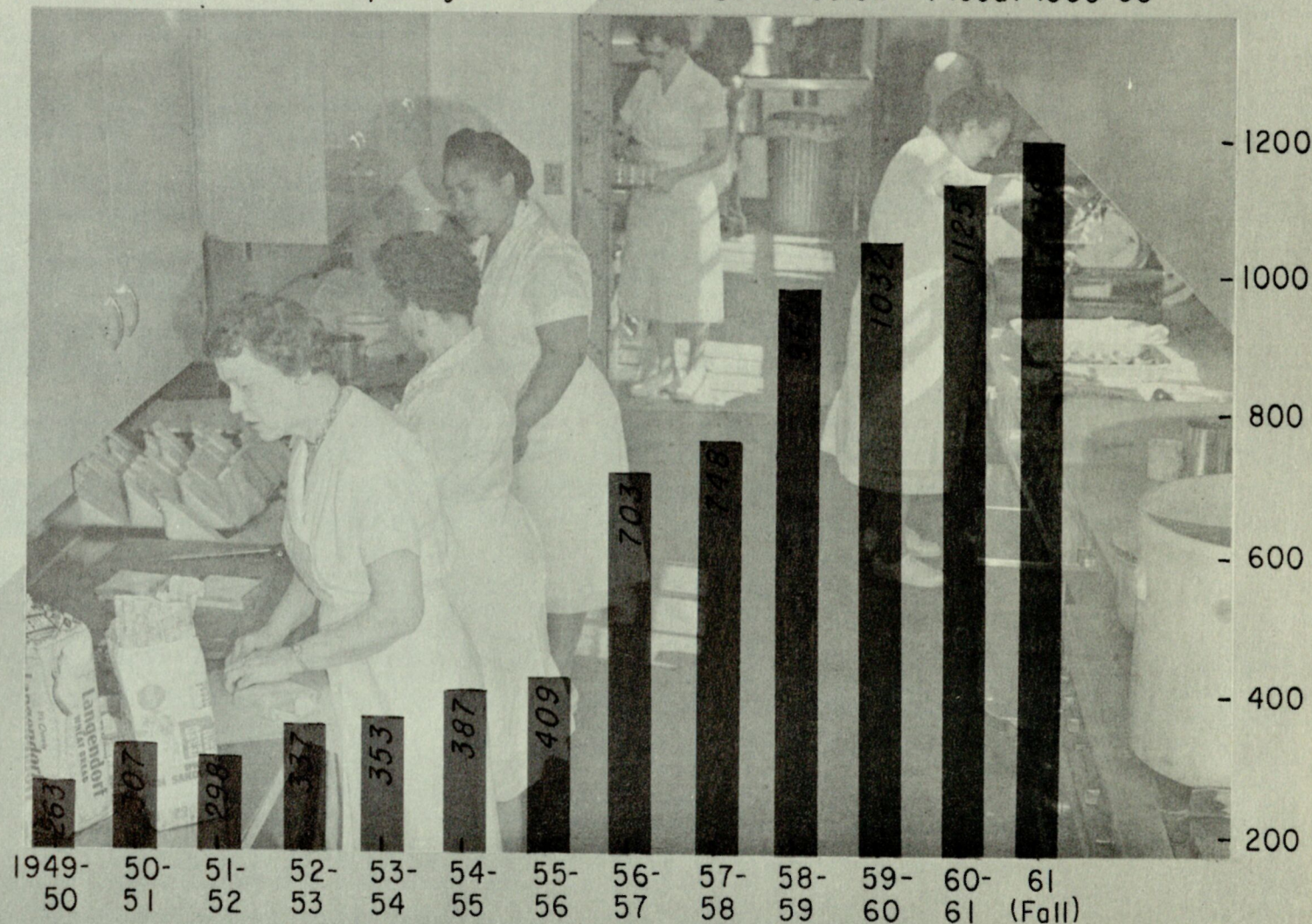
CLASSIFIED EMPLOYEES

(Total payroll, September 1961, including residents and interns, 1689)

University of Oregon Medical School 1949-61

Sources: Personnel Office, UOMS; Annual Report, Oregon Civil Service Commission... Fiscal 1959-60

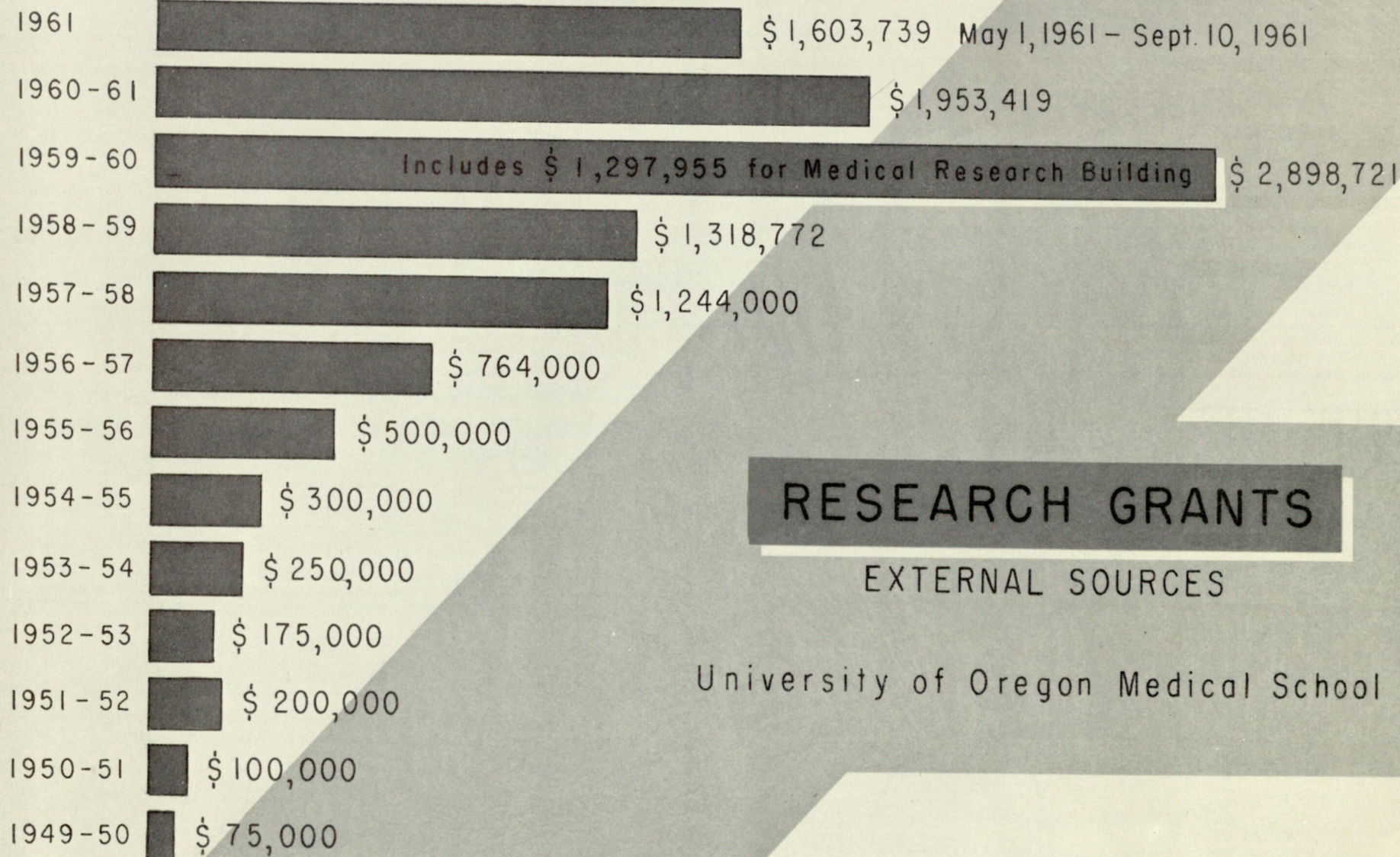
Of more than 80 state agencies, the UOMS ranked 3rd in total number of classified employees: 1st is the Highway Commission with 3,744; Oregon State College with 1,335; UOMS with 1,125; and Oregon State Hospital with 970.



1960-61		\$ 2,789,874
1959-60	Includes \$1,297,955 Federal matching funds for Medical Research Building	\$ 3,661,457
1958-59	Includes \$1 million bequest to UOMS from the Devers estate	\$ 3,108,429
1957-58		\$ 1,655,493
1956-57		\$ 1,097,830
1955-56		\$ 1,038,493
1954-55		\$ 713,623
1953-54		\$ 612,662
1952-53		\$ 454,372
1951-52		\$ 331,978
1950-51		\$ 346,016
1949-50		\$ 249,693

TOTAL CASH GIFTS

University of Oregon Medical School
1949 - 1961



RESEARCH GRANTS

EXTERNAL SOURCES

University of Oregon Medical School