

the

Bulletin*

MULTNOMAH COUNTY MEDICAL SOCIETY

Members and Wives are Invited!

JOINT DINNER PROGRAM

MULTNOMAH COUNTY MEDICAL SOCIETY
and
PORTLAND DISTRICT DENTAL SOCIETY
and
THE WOMAN'S AUXILIARIES

Tuesday, May 16, 1961

Mayfair Room
Hotel Benson

Social Hour: 6:00 P.M.
Dinner At: 7:00 P.M.

Dinner: \$3.50 per plate

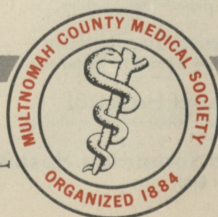
THE SPEAKER

MR. GEORGE, W. COOLEY, *Director*
Department of Medical Service
American Medical Association

Mr. Cooley has devoted his career to meeting the challenges of medicine and dentistry on a national level. He has wide experience in negotiations with labor, cost of medical care, patient complaints and prepaid health plans.

*Bring Your Wife—Meet the Dentists—Enjoy a Pleasant Evening
Our Last Society Meeting Until October!*

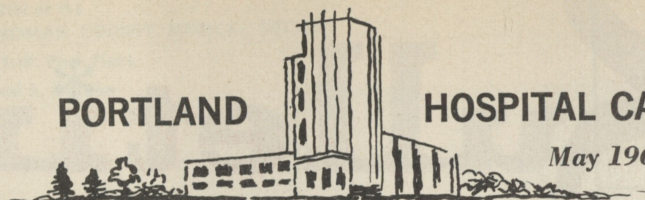
For Reservations call: CA 8-4175



APRIL
1961

Photo Story—Pages 26-27
President's Profile

May 1961



1 Gresham General Hospital

Staff meeting

Physicians & Surgeons Hospital

EENT department meeting 8 a.m.

Providence Hospital

Management advisory of hospital 1:30 p.m.
Medical conference (also meets May 8) . . . 7:30 p.m.

Emanuel Hospital

X-ray conference (every Monday) 3 p.m.

11 Providence Hospital

Lay advisory 7 a.m.

Good Samaritan Hospital

Neuro radiology conference
(also meets May 25) 4 p.m.

13 Good Samaritan Hospital

Medical section 8 a.m.

15 Holladay Park Hospital

Surgical department meeting 7:45 a.m.

Physicians & Surgeons Hospital

Medical department meeting 8 a.m.

St. Vincent Hospital

General practice department meeting . . . 6:30 p.m.

Providence Hospital

General practice 8 p.m.

16 Good Samaritan Hospital

Pediatric section 7:45 a.m.

Holladay Park Hospital

Psychiatric department meeting 12:15 p.m.

Providence Hospital

General Staff meeting 8 p.m.

17 Portland Sanitarium

Staff meeting 8 a.m.

Good Samaritan Hospital

EKG conference 8 a.m.
Ophthalmology conference 5:30 p.m.

22 Emanuel Hospital

Executive meeting 8 a.m.

Holladay Park Hospital

Medical department meeting 7:45 a.m.

Good Samaritan Hospital

Orthopedic fracture clinic 11:30 a.m.

St. Vincent Hospital

Ob-gyn department meeting 5 p.m.

Emanuel Hospital

Survery department meeting 7 p.m.

23 Emanuel Hospital

GP department meeting 7:45 a.m.
Medical department meeting 6:45 p.m.
Ob-gyn department meeting 7:30 p.m.

24 Portland Sanitarium

Death and morbidity conference 8 a.m.

25 Emanuel Hospital

Orthopedic department meeting 8 a.m.

27 Good Samaritan Hospital

General Staff 8 a.m.

2 Good Samaritan Hospital

Neuropathology conference
(also meets May 16) 8 a.m.
Neuro-ophthamology conference
(every Tuesday) 5 p.m.
OB section 7:30 p.m.

Providence Hospital

Pediatric conference 8 a.m.

St. Vincent Hospital

Surgery department meet. (every Tues.) 12:30 p.m.

3 St. Vincent Hospital

Medical department meeting (every Wed.) 8 a.m.

Good Samaritan Hospital

X-ray conference (every Wednesday) 4 p.m.

4 Providence Hospital

Joint conference 7:30 p.m.

5 Good Samaritan Hospital

Tumor clinic (every Friday) 12:30 p.m.

6 Good Samaritan Hospital

CPC (also meets May 20) 8 a.m.

8 Physicians & Surgeons Hospital

Surgical department meeting 8 a.m.

Good Samaritan Hospital

EEG conference (also meets May 22) 8:30 a.m.

Providence Hospital

Credentials committee 7:30 p.m.

9 Providence Hospital

Executive committee 7 a.m.
Record committee and tissue committee . 7:30 p.m.

Emanuel Hospital

Pediatric department meeting 8:30 a.m.
Tumor clinic (also meets May 23) 12 p.m.

10 Portland Sanitarium

Tumor clinic 8 a.m.

HAACK
presents

HOLAD

Symptomatic relief of
gastro-intestinal disorders.

Antispasmodic—Economical to Use

Composition:

Adiphenine HCL 50. mg.
Phenobarbital 20. mg.

Action and Uses:

Adiphenine HCL has a weak parasympatolytic action on the hollow viscera **without** the effects of atropine on the central nervous system, heart, eye and salivary glands, it also has a marked papaverine-like antispasmodic action on smooth muscle. Holad is used in the symptomatic relief of gastro-intestinal spasma, peptic ulcer, gastritis, biliary and renal colic, dysmenorrhea and in the management of the neurogenic bladder. The effect is exerted in about 30 minutes after oral administration.

Administration and Dosage:

Usual adult dosage 1 or 2 tablets, T.I.D. preferably before meals.

How supplied:

"Holad tablets" (red coated) bottles of 100.

Note: Since Holad has a marked local anesthetic action, tablets should be swallowed whole and not chewed. Holad is relatively non-toxic and cumulation does not occur, but a few cases of idiosyncrasy, shown by dizziness and incoordination, has been reported, these symptoms quickly disappear on cessation of treatment.

HAACK LABORATORIES, INC.
PORTLAND 1, OREGON



NEWS - VIEWS

New York Times predicts "best chance ever" for passage at this session of Congress of Keogh Bill (H.R. 10) which establishes tax-deferred retirement program for self-employed. Optimism hinges on new modifications which cuts from \$7,500 to \$2,500 the amount of money that may be set aside each year and requires employers with more than three employees to provide similar plan for his staff.

☆ ☆ ☆

Members of Grievance and Membership Committees have been selected to join Board of Trustees for May 12-14 Internal Affairs Planning Conference of Multnomah County Medical Society at Timberline Lodge. At least 50 couples will participate.

☆ ☆ ☆

One man's views on "free choice." HEW Secretary Ribicoff said under questioning about "free choice" that

only hospitals signing contracts would be available to patients under Administration's health program. Also in Washington, Senator Maurine Neuberger has been named to Senate's new Special Committee on Problems of the Aging. Fellow member is Senator Barry M. Goldwater.

☆ ☆ ☆

President Melvin W. Breese recently presented check for \$1,065 from the Multnomah County Medical Society

(Continued on page 6)

CONTENTS

Hospital Calendar	2
News-Views	4
O.P.S. Senior Health Plan.....	15
New Members.....	18
Society Meeting Notices	22
Dammasch State Hospital.....	23
Cancer Survey	24
Picture Story	26
Library Notes	33
Classified	37

GLADSTONE PHARMACY

PRESCRIPTION
LABORATORY
CONSULTANTS

GLADSTONE, OREGON

Phone: Olive 6-2901

Medical, Dental and Professional PLACEMENT SERVICE

1033 S. W. Yamhill
CApitol 8-9294

LOIS LUCAS—Director
EVELYN REISNER—Asst. Director

Proven

in over six years of clinical use and more than 750 published clinical studies

Effective

for relief of anxiety and tension

Outstandingly Safe

- 1 simple dosage schedule produces rapid, dependable tranquilization without unpredictable excitation
- 2 no cumulative effects, thus no need for difficult dosage readjustments
- 3 does not produce ataxia, change in appetite or libido
- 4 does not produce depression, Parkinson-like symptoms, jaundice or agranulocytosis
- 5 does not impair mental efficiency or normal behavior

Miltown®

meprobamate (Wallace)


Usual dosage: One or two 400 mg. tablets t.i.d.

Supplied: 400 mg. scored tablets, 200 mg. sugar-coated tablets; in bottles of 50.

Also supplied in sustained-release capsules . . .

Meprospan®

Available as Meprospan-400 (blue-topped *sustained-release* capsules containing 400 mg. meprobamate), and Meprospan-200 (yellow-topped *sustained-release* capsules containing 200 mg. meprobamate).

 WALLACE LABORATORIES / Cranbury, N. J.

NEWS-VIEWS

(Continued from page 4)

as annual contribution to support the fine library at the University of Oregon Medical School. Amount represents a portion of Society dues.

☆ ☆ ☆

Physicians in the news: George M. Robins elected to head the Allergy Foundation, and Arch W. Diack named Goodwill Industries "Man of the Year" primarily for organizing job evaluation program through Medical Society and cooperating physicians.

☆ ☆ ☆

New National Physicians Directory is due off press in May. The '58 issue revealed that from '56 to '58 the number of physicians in Mass., N. Y. and Pa. decreased while the three Pacific Coast states, paced by California, reported a sharp increase. The figures:

● *Dispensing Optician*

HAROLD R. KRUEGER

CApitol 3-4321



1030 S. W. Taylor St.
Ground Floor

Medical Arts Bldg.
Portland, Oregon

minus 594 to plus 1,115. Oregon added 44 physicians during the biennium, Washington 31, and California 1,040. Best guess is that trend continues.

☆ ☆ ☆

Third annual Oregon Cancer Conference will be held at Portland's Sheraton Hotel, July 13-14. Affair is sponsored by Oregon State Medical Society and Oregon Division, American Cancer Society. April is Cancer Crusade month!

☆ ☆ ☆

The American Medical Association has named Past President Louis Orr to head important new Commission on the Cost of Medical Care. Local Societies are asked to cooperate in three-year survey.

☆ ☆ ☆

Is 65 a scientifically selected retirement age? Judging from the statistics, physicians don't think so. Latest count shows at least 67 practicing physicians in Portland are over 65. That's more than 8% of the entire Society membership.

☆ ☆ ☆

C. Conrad Carter is the new President of the Epilepsy League of Oregon. Philip J. Reilly was named to the Board of Directors.

(Continued on page 8)

Your Prescription Headquarters for the Eastmoreland-Westmoreland District

WESTMORELAND DRUG COMPANY

7201 S. E. Milwaukie
E. E. Alford

BEImont
4-6519

Because it contains fibrinolysin—an active enzyme and not a precursor—ELASE quickly lyses fibrinous material in serum, clotted blood, and purulent exudates. It does not appreciably attack living tissue, nor does it have an irritating effect on granulation tissue in wounds.¹⁻⁴

As a “...feasible and rational adjunct to the treatment of infected wounds,”^{2,1} ELASE may be used to advantage in a variety of exudative lesions. Particularly beneficial results¹⁻⁴ have been achieved in vaginitis and cervicitis...cervical erosions...surgical wounds...burns...chronic skin ulcerations...infected wounds...fistulas...sinus tracts...abscesses.

See medical brochure for details of administration and dosage.

PACKAGE INFORMATION: ELASE Ointment is supplied in 10-Gm. and 30-Gm. tubes. Disposable vaginal applicators (V-Applicators) for instillation of ointment are available separately in packages of 6. ELASE is also supplied in rubber-diaphragm-capped vials of 30-cc. capacity for reconstitution with 10 cc. of isotonic sodium chloride solution.

REFERENCES: (1) Coon, W. W.; Wolfman, E. F., Jr.; Foote, J. A., & Hodgson, P. E.: *Am. J. Surg.* 98:4, 1959. (2) Friedman, E. A.; Little, W. A., & Sachtleben, M. R.: *Am. J. Obst. & Gynec.* 79:474, 1960. (3) Margulis, R. R., & Brush, B. E.: *Arch. Surg.* 65:511, 1952. (4) Personal Communications to the Department of Clinical Investigation, Parke, Davis & Company, 1959.

**for
enzymatic
debridement
in a
variety
of exudative
lesions...**

**FIBRINOLYSIN AND DESOXYRIBONUCLEASE,
COMBINED, (BOVINE), PARKE-DAVIS** ®

ELase

FIBRINOLYSIN
to provide active enzyme
for lysis of fibrin

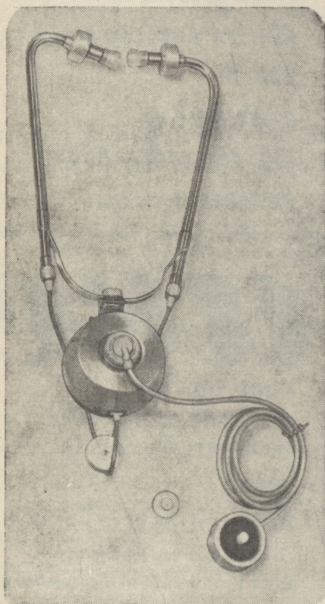


DESOXYRIBONUCLEASE
to lyse desoxyribonucleic
acid in degenerating leukocytes
and other nuclear debris

PARKE-DAVIS

PARKE, DAVIS & COMPANY, Detroit 32, Michigan

The New MAICO
STETHETRON
(Electronic Stethoscope)



Easier, Faster
More Accurate
AUSCULTATION

Selective Amplification
at three frequencies

Contact Microphone
does not pick up
Room Noise.

Full Transistor Circuits

917 S. W. Alder • CA 2-5454

Hearing Counsellors, Inc.

MAICO AUDIOMETERS
HEARING AIDS

NEWS-VIEWS

(Continued from page 6)

Newly organized Speakers Bureau to inform public of best ways to meet medical needs of our aging population held briefing session recently. More volunteers are welcome.

☆ ☆ ☆

Applications are still open for physicians interested in serving on Bulletin's new Editorial Board. A call to the headquarters (CA 8-4175) will put your name on the list of volunteers.

If you have a reservation for a Society dinner meeting and then find it will be impossible to attend you'll save money if you cancel the reservation before noon on the day of the program. Just call Society headquarters, CA 8-4175.

By action of the Board of Trustees, any member of the Multnomah County Medical Society who makes a reservation for a dinner program, and fails to cancel or attend, will be billed for the listed cost of the dinner or dinners.

The Society must guarantee the hotel a certain number of dinners for each meeting based on advance reservations. When attendance falls below the guarantee, the Society is billed for the difference. The first two meetings this year resulted in a deficit of 66 dinners.

As one member of the Board observed, "We can't justify using dues income to pay for meals the members order and then don't eat."

(Continued on page 10)

Report to Doctors

on the new kind of margarine that's
more than 75% unsaturated vegetable oil

*Award Margarine
contains substantially more
poly-unsaturated fat
(linoleic glycerides)
than any other spread sold
in food stores*



Award contains 37% more poly-unsaturated fat than a leading margarine made with some liquid corn oil

Award contains 144% more poly-unsaturated fat than a leading margarine made from 100% corn oil, partially hydrogenated

Award contains 2 to 5 times more poly-unsaturated fat than regular margarines

2 oz. of Award contains 18 gr. of linoleic glycerides. Write Research Laboratories, Swift & Company, Chicago 9, Illinois, for a detailed analysis of the fat content of popular spreads.



Swift & Company is now introducing new Award Margarine on the West Coast. Award Margarine is being made available in response to an interest expressed by many doctors and nutritionists in a good-tasting spread which is compatible with a diet designed to control serum cholesterol.

More than 75% of the oil used in making Award is unsaturated liquid vegetable oil which remains unchanged and has its natural content of poly-unsaturated fatty acids. The rest of the oil used has been lightly hydrogenated to give Award the firmness that is essential to an appetizing spread.

The exclusive blend of vegetable oils developed for Award, and the newly perfected

technique for working these oils together, have produced a wholesome, nutritious, economically priced margarine of exceptional flavor and texture. Award can be enjoyed by the whole family.

FREE FOR YOUR PATIENTS:

If you would like to introduce some of your patients to this new kind of margarine, Swift & Company will send you a supply of professional coupons which may be redeemed for a free pound of Award at food stores on the West Coast. Write on your letterhead to Research Laboratories, Swift & Company, Chicago 9, Illinois.

SWIFT & COMPANY

NEWS-VIEWS

(Continued from page 8)

Week's vacation at the beach—room and board for the entire family—is offered by Boy Scouts to physicians wishing to serve as camp doctors this summer. Open dates: June 25 through August 13. For information, call Society headquarters.

☆ ☆ ☆

Latest bill to regulate animal experiments, labeled Griffiths Bill (H.R. 1937), was assigned to committee on interstate and foreign commerce, Rep. Oren Harris, chairman. Bill would (1) license investigators, (2) require prior approval of detailed research plans,

(3) force maintenance of scientifically superfluous records, (4) require special reports and (5) empower officials to terminate experiments and destroy animals. Opinions are in order. Write to the Hon. Oren Harris, House Office Building, Washington 25, D. C.

☆ ☆ ☆

Attractive booklet describing services of the Portland Center for Hearing and Speech (UGN agency) is available to physicians. Write to Warren E. Johnson, M.A., 2111 N. E. Weidler St., or call AT 8-5759.

☆ ☆ ☆

March issue of Good Samaritan News Letter reports "enthusiastic response" to Intensive Care Unit (ICU). Says one physician, "Life saving in at least two instances in my personal experience."

☆ ☆ ☆

Portland Sanitarium has named Walter Reiner chairman of new committee to draw up schedule for residency training and to consider possibility of setting up a general practice residency. Eldon Snow and Warren Hunter share the assignment.

☆ ☆ ☆

Established 1915

HAL H. MOOR, INC.

Dispensing Opticians



— TWO LOCATIONS —

1130 S. W. Morrison Street
315 Mayer Bldg. 1311 N. W. 23rd
CApitol 3-7229 CApitol 3-1980

"Everything
Surgical"

Doctors'
SUPPLY CO.

HOSPITAL
EQUIPMENT
and SUPPLIES

YOUR DEPENDABLE SUPPLIER
Prompt Delivery Service
Mail Orders given immediate attention
527 S. W. 12th Avenue
(BETWEEN WASHINGTON AND ALDER STREETS)

PORTLAND 5, OREGON

E. EINAR RASMUSSEN, Manager

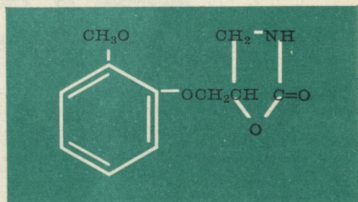
CApitol 8-9381

LEDERLE INTRODUCES

TREPIDONE®

MEPHENOXALONE LEDERLE

TO RESTORE THE
NORMAL PATTERN OF
EMOTIONAL RESPONSE



CHEMICALLY DISTINCT FROM
PREVIOUS TRANQUILIZERS

New ataractic which works without detracting significantly from mental alertness. Treated patients generally respond normally to everyday situations without becoming drowsy.

DOSAGE: as an ataractic: Recommended adult dose is one 400 mg. tablet four times daily. **PRECAUTIONS:** Extensive clinical investigations have failed to reveal significant toxicity. Nonetheless, as with all new drugs, particularly when the drug is used at high dosage or at any dosage for extended periods, routine hemograms are advisable. The patient should always remain under supervision as long as TREPIDONE therapy is continued. If side effects outweigh the therapeutic benefits or become a therapeutic problem, the drug should be discontinued. **PACKAGE:** Tablets of 400 mg. TREPIDONE Mephenoxalone, bottle of 50.

LEDERLE LABORATORIES, A Division of AMERICAN CYANAMID COMPANY, Pearl River, New York



RALEIGH HILLS HOSPITAL *

Member of the American Hospital Association
Recognized by the American Medical Association

EXCLUSIVELY for the TREATMENT of ALCOHOL ADDICTION by CONDITIONED REFLEX and ADJUVANT Methods

The Medical Staff of Raleigh Hills Hospital is composed of physicians qualified and experienced in the treatment of alcoholism. All are members of the Multnomah County Medical Society, the Oregon State Medical Society, and the American Medical Association

Raleigh Hills Hospital

LARRAE A. HAYDON, Administrator
6050 S. W. Old Scholls Ferry Road — Portland 7, Oregon
Mailing Address: P.O. Box 366
Telephone: CYpress 2-2641

***FORMERLY RALEIGH HILLS SANITARIUM, Inc.**

**THE BULLETIN
of the
MULTNOMAH COUNTY
MEDICAL SOCIETY**



**Multnomah County
Medical Society**

OFFICERS

- MELVIN W. BREESE *President*
 CHARLES E. LITTLEHALES *Past-President*
 NORMAN A. DAVID *President-Elect*
 J. SCOTT GARDNER *First Vice-President*
 OTTO C. PAGE *Second Vice-President*
 QUINTEN W. COCHRAN *Secretary*
 WILLIS J. IRVINE *Treasurer*

TRUSTEES

Term expires 1961: Hugh D. Colver, Verner V. Lindgren, Ernest T. Livingstone, Louis O. Machlan, Jr., Matthew McKirdie, Dale C. Reynolds.

Term expires 1962: Alfred J. Kreft, G. Prentiss Lee, Thomas R. Montgomery, J. Richard Raines, Raymond M. Reichle, William C. Scott.

TRUSTEES OF

OREGON STATE MEDICAL SOCIETY

Term expires in 1961: Russel L. Baker, Arch W. Diack.

Term expires in 1962: Melvin W. Breese, W. Charles Martin.

Term expires in 1963: John W. Stephens, James V. Woodworth.

Term commences in September, 1961: Alfred C. Hutchinson, Werner E. Zeller.

DELEGATES TO THE

OREGON STATE MEDICAL SOCIETY

- | | |
|--------------------|----------------------|
| Arthur W. Berg | Warren C. Hunter |
| Stanley A. Boyd | Alfred C. Hutchinson |
| John W. Bussman | Willis J. Irvine |
| Allen K. Chappell | G. Prentiss Lee |
| Winfred H. Clarke | Verner V. Lindgren |
| Quinten W. Cochran | J. Clifton Massar |
| Robert J. Condon | Clinton S. McGill |
| Norman A. David | Raymond A. McMahon |
| Zanly C. Edelson | Joseph W. Nadal |
| Howard C. Emerson | Warren E. Nielsen |
| William A. Fisher | J. Richard Raines |
| J. Scott Gardner | William C. Scott |
| John F. Hayes | Charles H. Sparks |

Robert H. Tinker

VOL. XVI APRIL, 1961 No. 4

*Official Publication
of the*

Multnomah County Medical Society

Authorized by the Board of Trustees of the Multnomah County Medical Society and published monthly under the auspices of the Committee on Public Relations:

Stanley A. Boyd, Chairman

John W. Bassett

Robert E. Fischer

Herbert E. Griswold

F. Sidney Hansen

George R. Satterwhite

Gerald W. Schwiebinger

Lendon H. Smith

Alvin O. Uhle

W. Rich Warrington

Richard G. Layton Executive Secretary

Ann G. Bridges Editor

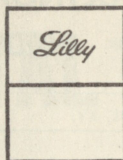
HOSPITAL REPORTERS

- W. J. Sittner *Emanuel*
 H. Lenox H. Dick *Good Samaritan*
 George J. McGowan *Holladay Park*
 Ira A. Manville *Physicians
& Surgeons*
 Ralph W. Isaac *Portland Sanitarium*
 Edward W. Davis *Providence*
 A. B. Shields *St. Vincent*
 Jarvis Gould *University Hospital*

Editorial and advertising offices: 2164 S. W. Park Place, Portland 5, Oregon; Telephone CA 8-4175.

Opinions expressed in Bulletin articles, whether signed or unsigned, are those of the individual writers and do not necessarily represent the opinions or policies of the Committee on Public Relations of the Multnomah County Medical Society.

relief
from pain,
fever,
and inflammation



■ *When inflammation is present, Darvon® combined with A.S.A.® Compound reduces discomfort to a greater extent than does either analgesic given alone.*

DARVON® COMPOUND and DARVON COMPOUND-65

... combine the analgesic advantages of Darvon with the antipyretic and anti-inflammatory benefits of A.S.A. Compound. Darvon Compound-65 contains *twice* as much Darvon as regular Darvon Compound without increase in the salicylate content or size of the Pulvule®.

Formulas:

Darvon Compound		Darvon Compound-65
32 mg.	Darvon	65 mg.
162 mg.	Acetophenetidin.	162 mg.
227 mg.	A.S.A.®	227 mg.
32.4 mg.	Caffeine	32.4 mg.

Usual Dosage:

Darvon Compound: 1 or 2 Pulvules three or four times daily.

Darvon Compound-65: 1 Pulvule three or four times daily.

Darvon® Compound (dextro propoxyphene and acetylsalicylic acid compound, Lilly)

Darvon® (dextro propoxyphene hydrochloride, Lilly)

A.S.A.® Compound (acetylsalicylic acid, acetophenetidin, and caffeine, Lilly)

A.S.A.® (acetylsalicylic acid, Lilly)

Eli Lilly and Company

Indianapolis 6, Indiana, U.S.A.

The Bulletin

MULTNOMAH COUNTY MEDICAL SOCIETY

VOL. XVI

APRIL, 1961

No. 4

Trustees Recommend Major Alterations In O.P.S. Senior Health Insurance Plan

The Board of Trustees of the Multnomah County Medical Society has recommended three major changes in a proposed O.P.S. Senior Security Health Insurance Plan for persons over age 65.

The plan as submitted at the March meeting of the Board is the result of a 1960 Multnomah Society resolution to the State House of Delegates. Each county Society has been asked to review the proposal prior to final consideration by the Delegates at the April 21-22 Mid-Year Meeting.

New Ceiling Proposed

Multnomah Trustees recommended that the income ceiling for service benefits be established at \$4,000 per year rather than at the usual O.P.S. lid of \$8,000, medical services be paid on the basis of 80 per cent of the current O.P.S. fee schedule and a conversion factor of five (5) be adopted for the medical section of the fee schedule. (Persons with higher incomes could enroll on an indemnity basis.)

In presenting the plan, O.P.S. spokesmen emphasized that its success hinges upon the enthusiastic support of every physician in the State. "This isn't an O.P.S. proposal. This represents the doctors' program for our older population," declared one speaker.

The plan offers two levels of benefits on an optional basis. For a premium of approximately \$17.50 per

month, a couple could purchase a \$100 deductible policy which would pay up to \$10 a day for hospital room and board for a maximum of 30 days per year, or twice as many days in a nursing home at \$5 per day, provided the nursing home care follows hospitalization. The policy has a maximum of \$2,000 per year for medical and surgical care and would pay 80 per cent of hospital costs up to \$2,000.

Preferred Plan Explained

The preferred plan, estimated at \$29.00 per couple, takes affect after a \$50 deductible. The indemnity for hospital room and board is set at a maximum of \$18 per day for not more than 70 days a year, or \$8 per day for nursing homes on the two for one ratio, and provided the patient's stay in a nursing home follows hospitalization. The same maximum medical-

(Continued on page 16)

Your M.C.M.S. Officers for 1961



Executive Committee of the Multnomah County Medical Society meets for several hours each month to consider a wide variety of matters in advance of full session with the Board of Directors. The Executive Committee directs activities of headquarters office, approves employment of personnel, approves necessary emergency expenditures, cares for other emergencies which may arise during interim between meetings of Board of Trustees, prepares annual budget. From left: Quinten W. Cochran, Secretary; Charles E. Littlehales, Past President; J. Scott Gardner, First Vice President; Melvin W. Breese, President; Otto C. Page, Second Vice President; Willis J. Irvine, Treasurer, and Norman A. David, President-elect.

Senior Health Plan

(Continued from page 15)

urgical-hospital benefits as proposed or the standard plan would apply.

Federal Medicine

Switching from insurance to government activities, the Trustees commended the Committee on Public Relations for establishing a physician Speakers Bureau to inform the public of the reasons for medicine's strong opposition to including health care benefits under the Social Security system.

The Trustees approved two recommendations which cleared the way for a public health nurse survey of standards of patient care in Portland and

Multnomah County, and opened the door for anyone who is not receiving adequate medical care because of inability to pay to report the situation to the Society.

Members of the Woman's Auxiliary will be invited to follow up the reports through personal interviews to ascertain the real need and to assist the Society in securing help when indicated.

The news media will be asked to cooperate with the program.

Other Actions

In other business, the Trustees approved a proposal of the Committee on Public Health that, in view of negligible positive findings, the City Bureau of Health be requested to substitute tuberculin tests for chest x-rays of high school athletes.

Role of Public Health Program In Relation to Private Medicine

By Thomas L. Meador, M.D.

Portland City Health Officer

The recent request of the Multnomah County Medical Society that the City Health Officer conduct immunization clinics is a gratifying expression of the Society's recognition that a Department of Public Health renders a distinct service to the physician in private practice.

It has been said that "a tool is an extension of a man's hand," enabling him to reach farther, hit harder, tear apart more easily or grasp more firmly. Similarly, the function of a Health Department is to extend preventive medical service beyond the point where, for any of several reasons, the service of the private physician and his fellow practitioners may stop.

Scope of Public Health

The scope of such extension of services is presented clearly in the special article by Regner W. Kullberg, M.D. which was published in Northwest Medicine, Oct., 1955. Briefly, these services are: health education, sanitary control of man's environment, enforcement of laws preventing the spread of communicable diseases, case-finding service to discover conditions which should receive medical attention, health guidance in time of disaster and maintaining records of vital statistics.

The Health Officer would gladly leave it to the private physician to immunize the children and young adults under his care against polio, diphtheria and smallpox, and to screen his patients for active and latent tuberculous

infection by means of the tuberculin test and the chest x-ray examination of all reactors.

Obligations of Health Officer

Because the Health Officer is legally responsible for any communicable disease getting out of control by neglect on his part, he is obliged to conduct immunization clinics when only 50 per cent of the potential victims of the major preventable diseases are fully immunized. He is also obliged to conduct tuberculosis case-finding activities to suggest the need for searching for this insidious disease in patients, as well as apparently healthy persons, or when the highest incidence of the disease occurs in the medically indigent.

Dr. Kullberg points out the clear distinction between Public Health services and so-called State Medicine. His paper and an editorial in the same journal concerning the issues involved are recommended reading on the subject of the relationship of a Health Department to the private physician.

Co-operation on the part of both is required to keep the hand and the tool functioning at peak efficiency. With such co-operative functioning, a high level of medical care is assured.

HAACK BROS.

exclusive
PRESCRIPTION PHARMACY
MEDICAL DENTAL BUILDING
Capitol 3-1155

elected to active membership in the Multnomah County Medical Society

February 7, 1961

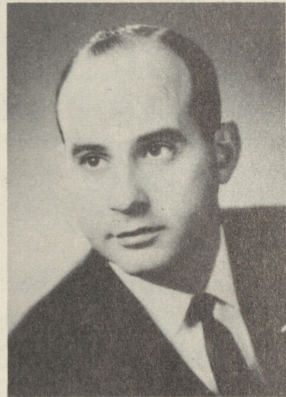
Graduated from
 University of Oregon
 Medical School, 1953

Residency
 Mayo Clinic, 1954-59
 Consultant, Section of Cardiology,
 1959-60

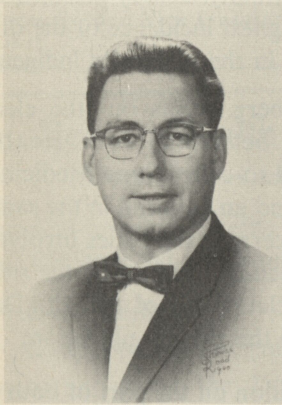
Member of Staff
 St. Vincent, Good Samaritan
 Providence, Emanuel,
 Physicians & Surgeons

**University of Oregon
 Medical School**
 Clinical Instructor
 Department of Medicine,
 Division of Cardiology

Family
 wife, Shirley
 three children



HERBERT J. SEMLER, M.D.
 2330 Northwest Flanders
 Cardiology



Graduated from
 Hahnemann, 1947

Residency
 Butterworth Hospital
 Grand Rapids, Mich.

**American Board
 of Anesthesiology**

Member of Staff
 St. Vincent

Family
 wife, Pauline
 four children

Special interests
 electronics, music, skiing

RICHARD C. HOUGHTON, M.D.
 2455 Northwest Marshall
 Anesthesiology

OVERWEIGHT?
 10-12 HOUR HUNGER CONTROL WITH
 LESS THAN 1% CNS STIMULATION
TENUATE® DOSPAN®

Tom Ogle, PRESCRIPTIONS
 4212 N. E. Broadway
 Phone AT. 2-1323

SERVICE - QUALITY - RELIABILITY

POWERS & ESTES
 Prescription Specialists
OPEN ALL NIGHT
 CApitol 8-2341

Morgan Bldg, 724 S. W. Washington St.

BELAP[®] anti-spasmodic-sedative.

Natural alkaloids of Belladonna

(economical to use)

BELAP No. 0 Formula

Belladonna Extract $\frac{1}{8}$ gr.*
Phenobarbital $\frac{1}{8}$ gr.

BELAP No. 1 Formula

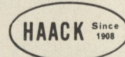
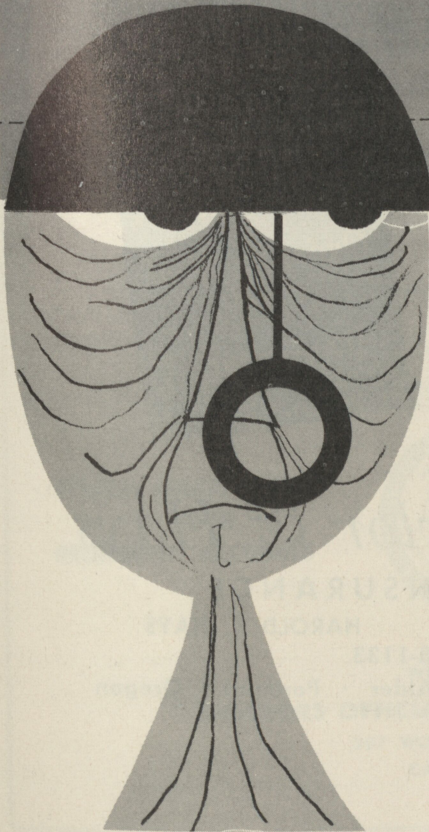
Belladonna Extract $\frac{1}{8}$ gr.*
Phenobarbital $\frac{1}{4}$ gr.

BELAP No. 2 (Scored) Formula

Belladonna Extract $\frac{1}{8}$ gr.*
Phenobarbital $\frac{1}{2}$ gr.

**Equivalent 5 minims Tinct. Belladonna, USP.*

Prescribe **BELAP[®]** with confidence



HAACK LABORATORIES, INC.
Portland 1, Oregon

**AN OREGON
HOMEOWNERS POLICY
EVEN INSURES BOATS
UP TO 50 H.P.!**



... and savings up to 20%

This wonderful new policy protects you, your family, your home, your belongings, and your automobile against loss, damage, fire, theft and liability.

*One policy!
One premium!
One expiration date!
One agent!*

Pownall, Taylor & Hays

GENERAL INSURANCE

H. C. POWNALL

HAROLD S. HAYS

CApitol 8-1133

Loyalty Building • 317 S.W. Alder • Portland 4, Oregon

Physicians Guide Bureau Reorganization



Willard D. Rowland, M.D.
Secretary-Treasurer



W. A. Goss, M.D.
President



N. D. Wilson, M.D.
Vice-President

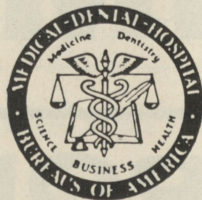
Guiding hands behind successful reorganization of the Doctors' Office Service Bureau, Inc., are the three officers pictured above who donate their services as supervisors of the business. Firm is now under direct management of Mr. Orin Amundson, and is affiliated with the Medical-Dental-Hospital Bureaus of America, Inc. Great strides have been made since new arrangement took effect last November 1. For collection consultation call, CA 8-8585.

DOCTORS OFFICIAL SERVICE BUREAU, INC.

ENDORSED BY
MULTNOMAH COUNTY MEDICAL SOCIETY

*A Specialized Collection Service
for the
Medical Profession*

**ETHICAL MANAGEMENT
OF YOUR
DELINQUENT ACCOUNTS**



**AFFILIATE OF:
MEDICAL-DENTAL HOSPITAL
BUREAUS OF AMERICA**

WRITE OR CALL:
DOCTORS OFFICIAL SERVICE BUREAU, INC.
307 WOODLARK BUILDING
CApitol 8-8585

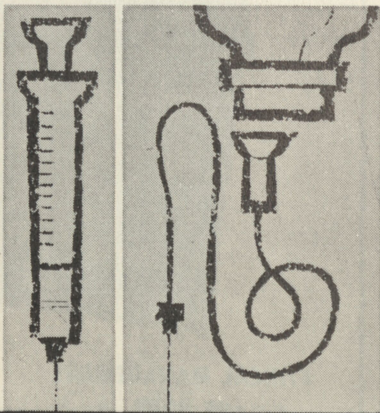
May 1961

- 9 Multnomah County Medical Society**
Executive Committee
Society headquarters, 5:15 p.m.
- 10 Oregon Radiological Society**
University Club, 6 P.M.
Oregon Dermatologic Society
- 12 Multnomah County Medical Society**
- 13 Internal Affairs Planning Conference**
Timberline Lodge
- 12 Portland Surgical Society**
- 13 Annual meeting**
James T. Priestley, guest speaker
"Hyperinsulinism"
- "Surgery of Biliary Obstruction";
"Hyperfunctioning of the Adrenal Glands"
- 15 Portland Academy of Hypnosis**
- 16 Multnomah County Medical Society**
Hotel Benson
Social hour, 6 p.m.; dinner, 7 p.m.
- Oregon Neuropsychiatric Society**
State Mental Hospital, Salem, 6:30 p.m.
- 23 Oregon Academy of Ophthalmology and Otolaryngology**
Aero Club, 6 p.m.

Intravenous, vials,
100 mg. (with 250 mg. Vit. C),
250 mg. (with 625 mg. Vit. C),
500 mg. (with 1250 mg. Vit. C).

Intramuscular, vials,
100 mg. (with 250 mg. Vit. C),
250 mg. (with 275 mg. Vit. C).
(each with procaine HCl 40 mg.,
magnesium chloride 46.84 mg.)

IV IM



ACHROMYCIN[®]

Tetracycline Lederle

a standard in parenteral antibiotic therapy

LEDERLE LABORATORIES, a Division of AMERICAN CYANAMID COMPANY, Pearl River, N. Y.



Dammasch Hospital Admissions Clarified

A screening clinic for patients seeking voluntary admission or psychiatric treatment on advice of family physicians is now provided by Dammasch State Hospital, Wilsonville.

Results of the screening clinic examination will determine if the patient will be admitted on a voluntary basis, treated as an out-patient, or referred to a different agency.

Appointments are available Monday through Friday between 9 and 11 a.m. by calling NEptune 8-3821, ext. 221.

The majority of Dammasch patients are court-committed from Multnomah and Washington counties only.

Washington county patients are committed through the office of Judge Edwin L. Jenkins. Inquiries may be directed to the judge's secretary, Midway 8-1111, ext. 243, Hillsboro.

Committing authority for Multnomah County is Judge William L. Dickson. Mr. Jack Allard, CApitol 7-8441, ext. 449, will answer procedural questions.

OVERWEIGHT?

10-12 HOUR HUNGER CONTROL WITH
LESS THAN 1% CNS STIMULATION

TENUATE[®] DOSPAN[®]

R A RELAXING LUNCHEON HOUR
IN OUR RESTFUL DINING ROOM

CAMPBELL COURT HOTEL

"Just a step from your office"

S. W. 11th and Main
CApitol 3-8101

Private rooms for
group luncheons and dinners

A Complete Service to the Profession

SURGICAL SALES, INC.

SURGICAL — HOSPITAL — LABORATORY SUPPLIES

CApitol 8-6439

400 S. W. 12th Ave.
Corner Stark

Portland 5, Oregon

Cancer Society Completes First Recheck Survey

Of the nearly 30,000 Oregon people originally enrolled in the six-year cancer prevention study of the American Cancer Society, only two were not located when the first annual recheck of participants was completed recently, says Mrs. S. W. Meserve, Portland, survey director for the society's Oregon division. Information on the recheck is now on its way to New York headquarters of the organization.

Among the 29,567 Oregon men and women taking part in the giant study to help American Cancer Society researchers find out, if possible, why some persons get cancer while others do not, there were 210 deaths in the first year.

In Multnomah county, which had 7439 individuals enrolled when the

study began, there were 47 deaths. How many of all these deaths were cancer-caused will not be known until photostatic copies of death certificates are studied by the society's medical affairs department in New York, which is directing the survey. Mrs. Edw. T. Wilson Jr. is survey chairman for Multnomah county.

Nationally, 1,100,000 Americans are taking part in the study. All of them provided confidential information about their health histories and personal living habits to help the research teams find some of the answers to cancer. A recheck of participants will be made each year during the six-year period.

Fellowships Announced

Six additional fellowships for residents in ophthalmology to be awarded July 1 have been announced by the Guild of Prescription Opticians of America, Inc.

Application forms and covering information are available by writing to FELLOWSHIPS, Guild of Prescription Opticians of America, Inc., 110 East 23rd Street, New York 10. Applications must be received by May 15.

Hammel's

PHARMACY

838 S. W. 10th Ave.

CA 6-2579 Portland, Oregon

Telephone CApitol 7-0786

Altstock, Fay & Company

exclusive dealers in

PHYSICIANS' AND HOSPITAL SUPPLIES

922 S. W. YAMHILL STREET

PORTLAND 5, OREGON



JOHN DOE, M. D.
Medical-Arts Center

Rx Solutio &
Remissio

John Doe M.D.



(Or get away from it all — on a float down The Yukon River)

Prescribe it for yourself... this Yukon Adventure tour by Alaska Airlines... to tone up the raveled nerve and sluggish brain. Take 9 colorful, restful days flying, floating and discovering the famous old Gold Rush country of Fairbanks, Dawson, Forty Mile, Red Creek and Eagle. A great builder-upper... this 9-day Wonder Tour of the 49th State and Yukon River.

Get full details from

ALASKA AIRLINES

Golden Nugget service

2320 Sixth Avenue
Seattle 1, Wash.

12335 Saticoy Street
Los Angeles, Calif.

595 Fifth Avenue
New York, N. Y.

Or See Your Friendly Travel Agent

TUESDAY — 7:00 A.M.

M.C.M.S. President Leads Busy Life in Addition to Practice ... Typical Week's Events Included Seven Meetings, Special Visit to School Board and Social Call on Medical Centenarian



Early morning conference with Nominating Committee at Thiele's. Group chose nominees for initial Multnomah Foundation for Medical Care Board of Directors. From left: Norman A. David, President-Elect; President Melvin W. Breese, Dale C. Reynolds, Trustee.

TUESDAY — 6:00 P.M.



Time out for a delicious meal served in spacious basement conference room at Society headquarters prior to meeting with 22 Society committee chairmen.

TUESDAY — DINNER



President Breese balances food with right hand and holds notes on opening remarks in other hand before addressing assembly of Society Committee chairmen. At right is Quinten W. Cochran, Secretary.

WEDNESDAY — NOON



Society President lunches at the University Club with representatives of United Good Neighbors to map physician campaign for next fall. Goal for 1962: \$62,000. From left: Mr. Dave Abram, General Campaign Chairman; William C. Scott, UGN Board of Directors and Society Trustee; President Breese, Mr. Leland H. Johnson, Chairman UGN Professional Division.

WEDNESDAY — 6:30 P.M.



Basement conference room is scene of dinner planning session before special school for 20 members of Society's Speakers Bureau on Health Care for Aged. Seated with the President are Norman A. David, Gordon B. Leitch, Edward E. Rosenbaum, Mr. Richard G. Layton, Executive Secretary, George R. Satterwhite, W. Rich Warrington, Stanley A. Boyd, Gerald W. Schwiebing and Arch W. Diack.

County Society President Keeps Informed On Activities of 22 Committees, Board of Trustees, Headquarters Staff and Community Affairs.

THURSDAY — 11:30 A.M.



A very special occasion. Society President pays respects to Dr. Amelia Ziegler on her 100th birthday. Photo was taken during TV interview with Newscaster Richard Ross.

THURSDAY — 6:45 P.M.



Pre-dinner discussion in Society lounge with Portland School Board members, Mrs. Forrest E. Rieke and Howard L. Cherry. Topic was reactivation of school health programs. Group later met with Society's Committee on Public Health.

FRIDAY — 7:30 A.M.



President Breese steps out of his automobile at Thiele's prior to regular Friday breakfast conference with officers and the Executive Secretary.

SPRING CONFERENCE CALENDAR

AMERICAN CANCER SOCIETY, Oregon Division, Inc.

John Tomlin Memorial Cancer Lectures

May 10-11, Rogue Valley Country Club, Medford

Lecture series and panel discussion.

Contact: A.C.S., Jackson County Unit, Box 808, Medford

BIENNIAL WESTERN CONFERENCE ON ANESTHESIOLOGY

May 16, 17, 18 — Sheraton-Portland Hotel

Meeting is open to all interested physicians.

Contact: John O. Branford, M. D., General Chairman, 2311 Northwest Northrup, Portland 10

NATIONAL TUBERCULOSIS ASSOCIATION

AMERICAN THORACIC SOCIETY

NATIONAL CONFERENCE OF TUBERCULOSIS WORKERS

Joint Annual Meeting

May 21-25, Cincinnati

Contact: National Tuberculosis Assn., 1790 Broadway, New York 19

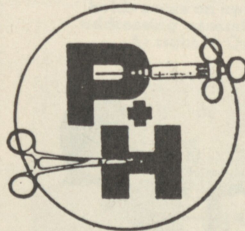
AMERICAN COLLEGE OF CHEST PHYSICIANS

27th Annual Meeting

June 22-26, Commodore Hotel, New York

Contact: American College of Chest Physicians, 112 East Chestnut Street, Chicago 11

SERVING THE DOCTOR, THE NURSE,
THE PATIENT



Physicians & Hospital Supply Co.

PORTLAND, OREGON

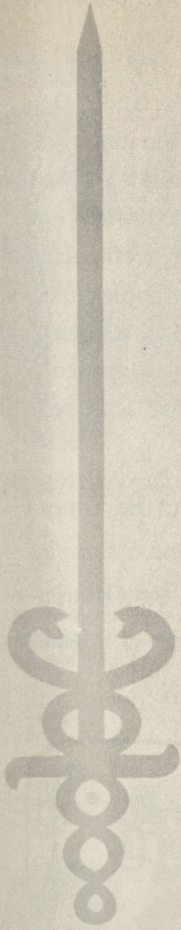
Telephone Capitol 7-3633

MAIN OFFICES & WAREHOUSE

112 N. W. 20th Avenue

DOWNTOWN STORE

Medical Arts Building



FIGHT CANCER WITH A CHECKUP AND A CHECK

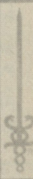
YOUR OWN BANK

April 1 19 58

PAY TO THE ORDER OF *American Cancer Society* \$ 12.00

Twelve ⁰⁰/₁₀₀ DOLLARS

Your Name

AMERICAN
CANCER
SOCIETY 

Use of Stone Dinnerware Results in Lead Poisoning

Two recent adult human cases of lead intoxication in Ohio have been attributed to consumption of food prepared and/or allowed to stand in colored Cerama Stone dinnerware, according to information received by the Oregon State Board of Health from the U. S. Public Health Service and the State of California.

Only colored Cerama Stone ware manufactured between 1956 and November 1960 is involved. The maker, Laurel Pottery Manufacturing Co., Stockton, Calif., has requested its outlets to return all such pottery for credit or exchange. Only a fraction of

the four million pieces have been recovered.

Tests by the California State Department of Health indicate that yellow (and, in fact, all colors **except white**) Cerama Stone ware, when exposed to dilute nitric acid, acetic acid, or certain foods such as applesauce, salad dressing, tomato juice, etc. gave up sufficient lead (Pb) to produce a significant hazard of human lead poisoning.

Persons locating pieces of the dinnerware described should send a sample, indicating the source, to the Occupational Health Laboratory, O.S.B.H., for testing.

If it's from

RIGGS

It's Right

FREE

FAST

DELIVERY

RIGGS PHARMACY

RADIO DISPATCHED

3 LOCATIONS

Lloyd Center —

On Morrison and Yamhill Streets
at Twelfth Ave.

Mailing Address: 1138 S. W. Morrison
Portland 5, Oregon

Phone Numbers
CA 8-0221—CA 7-2278—AT 8-6326

sickroom equipment oxygen service

- Hospital Beds
- Wheel Chairs
- Walkers • Crutches
- Traction Equipment
- Whirlpool Baths
- Aspirators • Lamps
- Refrig. Oxygen Tents
- "Bennett" Pressure Breathing Units

24-HOUR SERVICE

BE 4-0274

Visit Our New Location!
1500 N. E. Sandy Blvd.



relieve

COLIC

when due to cow's milk allergy

In a clinical study¹ of 206 milk-allergic infants, the "colicky" symptoms evident in 31% were promptly relieved when the infants were placed on a soya formula.

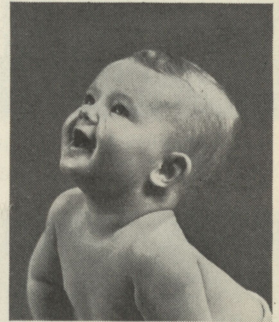
1. Clein, N. W.: *Pediat. Clin. North America*, Nov., 1954, pp. 949-962.

FOR PREVENTION: When allergic tendencies exist in parents or siblings, it is advisable to start the "potentially allergic" newborn on Sobee.

FOR DIAGNOSIS: If cow's milk allergy is suspected, a 24- to 48-hour trial period with Sobee often eliminates the need for an allergy study.

specify

SOBEE®



Hypoallergenic soya formula

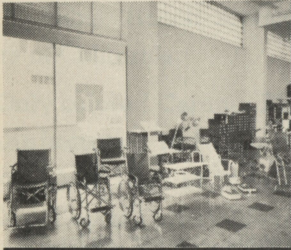


Mead Johnson
Laboratories

Symbol of service in medicine



SURGICAL & HOSPITAL
EQUIPMENT
Laboratory Supplies



SICK ROOM NEEDS
Sales & Rentals



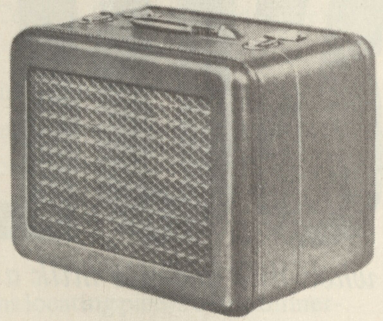
HEARING AIDS
Sales & Service



CORSETRY
Fashion & Corrective
Garments Nurses' Apparel



HONEYWELL PORTABLE ELECTROSTATIC AIR CLEANER



*brings relief to Asthma, Hay Fever
and Dust Allergy sufferers*

Air cleaned electrostatically is virtually free of dirt, dust pollen, soot, tobacco smoke, even bacteria. Removes an average of 90% of all airborne impurities. No costly installations, plugs into any standard outlet.

RENTAL OR SALES

Southwest 9th and Yamhill St., Portland
Capitol 7-3456

Shaw Surgical Co.



SOUTHWEST 9TH AND
YAMHILL ST., PORTLAND
CAPITOL 7-3456

LIBRARY NOTES

THE LIBRARY UNIVERSITY OF OREGON MEDICAL SCHOOL

3181 S. W. Sam Jackson Park Road
Portland 1, Oregon
CApitol 8-9181

8:00 A.M. - 10:30 P.M.
Monday through Friday

8:00 A.M. - 5:00 P.M. Saturday

LIBRARIAN: Miss Bertha B. Hallam

Recent Additions to the Library By Purchase, Gift and Exchange

Altman, P. L.—*Handbook of circulation*. Philadelphia, Saunders, 1959.

American Psychiatric Association—*The volunteer and the psychiatric patient*. Washington D. C., A.P.A., 1959.

Bailey, Hamilton — *Notable names in medicine and surgery*. 3d ed. London, H. K. Lewis, 1959.

Bayer, L. M. — *Growth diagnosis*. Chicago, University of Chicago Press, 1959.

Bechtol, C. O. — *Metals and engineering in bone and joint surgery*. Baltimore, Williams & Wilkins, 1959.

Bloodstein, Oliver—*A handbook on stuttering for professional workers*. Chicago, Ill., National Society for Crippled Children and Adults, 1959.

Blum, H. F. — *Carcinogenesis by ultra-violet light*. Princeton, N. J., Princeton University Press, 1959.

Bonica, J. J. — *Clinical applications of diagnostic and therapeutic nerve blocks*. Springfield, Ill., Thomas, 1959.

Busch, Harris — *Chemistry of pancreatic diseases*. Springfield, Ill., Thomas, 1959.

California, University—*A pharmacologic approach to the study of the mind*. Springfield, Ill., Thomas, 1959.

Dekaban, Anatole — *Neurology of infancy*. Baltimore, Williams & Wilkins, 1959.

Deutsch, Felix — *On the mysterious leap from the mind to the body*. New York, International Universities Press, 1959.

Douty, Esther—*Patriot doctor; the story of Benjamin Rush*. New York, Academic Press, 1958.

(Continued on page 38)



for rent:

Newly-created office space in Jackson Tower, for tenants who wish to locate at this distinctive downtown address. Parking facilities within the building—at Portland's most modern garage—included in office rental.

Latest-type Otis automatic elevators just installed. Interior remodeling to fit your specific needs for a suite or an entire floor.

Jackson Tower

a distinguished address:

S. W. Broadway at Yamhill
The professional hub of downtown Portland
Central location, adjacent to Hilton Hotel.
Call T. B. Bruno, CApitol 6-6216.

Life expectancy up 22 years since 1900. A baby born in 1900, Health Information Foundation reports, could expect to live 47.3 years, while one born in 1959 has a life expectancy at that time of 69.7 years. Social consequences arising from this trend include: record growth in the number of aged persons, increases in working lifetime of average person, decline in number of orphans, general postponing of widowhood to later years.

Hospital develops restaurant-type food service. A Chicago hospital has proved that hospitals can provide menus "comparable to those of the finest restaurants in the country" with-

out exorbitant cost. Writing in a recent issue of *HOSPITALS*, Journal of the American Hospital Association, Mrs. Alice E. Hopper, director of dietetics for Mt. Sinai Hospital and Medical Center, Chicago, describes the innovation. It includes a menu, similar in format and selection to that of a good restaurant. Wasted food and disposition of leftovers is minimized because patients have such a wide choice of food that they order only what they want and eat almost everything sent to them, she said. Costs also have been kept down, she pointed out, by tightening of dietary operations, especially in purchasing, food portioning, employee training and scheduling, and equipment improvements.

Oak Grove PROFESSIONAL CENTER



2905 S. E. OAK GROVE BLVD.

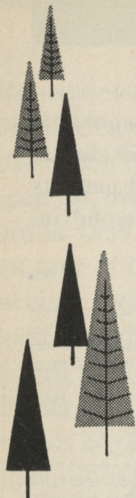
OAK GROVE, OREGON

Especially designed for
Medical offices and clinic use, etc.

Choose your interior plans
Electrically heated
Large parking area

Join other established tenants—a dentist, optometrist, lawyer

Units now available FOR LEASE—Phone OLive 4-1038



ANNOUNCEMENT
INCREASED BENEFITS
NOW AVAILABLE UNDER
THE OREGON STATE
MEDICAL SOCIETY GROUP
DISABILITY CONTRACT

A NEW MAXIMUM BENEFIT
OF \$150 WEEKLY AND \$50,000
ACCIDENTAL DEATH AND
DISMEMBERMENT IS NOW
AVAILABLE TO ELIGIBLE MEMBERS

More than 850 Members are now enrolled. Special advantages are: Attractive Savings in premium dollars — Lifetime Accident Benefit — Five Year Sickness Benefits — Partial Disability For Accidents — Non-Cancellable Provision — Local Claim Service.



Insurance Company of Oregon

Home Office: 808 S.W. 15th Ave. • Portland 5, Oregon
Phone: CApitol 2-9181 John Merrifield, President

Bulletin

CLASSIFIED ADS

FOR RENT: Medical office in new Med.-Dent. Bldg., centrally located in Beaverton, Oregon. Room for one or more physicians (approx. 1500 square ft.), air conditioned, off-street parking. Lessee has choice of office plan if leased before completion in July, 1961. For further details: Dr. Gordon Stratford—MI 4-5060.

☆ ☆ ☆

FOR LEASE. New medical clinic. 1520 sq. ft. at \$2.52 sq. ft. 11 treatment rooms. Ideal for 2-3 man association Parking, air conditioned. Will alter to suit. Robert Landis, D.M.D., 5311 N. Vancouver Ave.

☆ ☆ ☆

MEDICAL OFFICE in S. W. Portland. Approx. 650 sq. ft. Partially furnished. For rent or lease and part time or full time. Call CA 2-9363.

☆ ☆ ☆

NEW MEDICAL-DENTAL BLDG., N. E. 120th and Glisan, available for general practitioner, pediatrician, obstetrician, surgeon, E.N.T. or ophthalmologist. Exterior finish completed. Interior will be finished according to your plans and can be ready for occupancy within 80 days. For further information call Norm Glenn, AL 4-5517 or BE 4-9439.

☆ ☆ ☆

EXCELLENT OPPORTUNITY for Internist interested in general medicine. Small group in suburban area near Portland. Contact the BULLETIN, CA 8-4175.

FOR LEASE. Medical suite in attractive professional building. Air conditioned. Off Street parking, on bus line. 3 examining rooms, lab., business office, private office, reception room, private basement storage room. Around 900 sq. ft. Rent \$195.00 per month. No payment until July 1, 1961. Five year lease. Corner N. E. 44th and Fremont. Call AT 8-3136.

☆ ☆ ☆

DESIRABLE OFFICE SPACE in downtown Tigard. Excellent location: 8865 S. W. Center St. Suitable for one or two doctors. Will renovate within reason to suit tenant with lease. Call NE 6-1771.

☆ ☆ ☆

MED.-DENT. BLDG. under construction, 50th and E. Burnside. Call Dr. McIntyre, BE 5-3285. For lease.

☆ ☆ ☆

FOR RENT: Modern doctor's office available immediately, 2318 Pacific, Forest Grove, Oregon. Ample room two doctors. Excellent location. Contact Trust Dept., U. S. National Bank, Portland. Adequate off-street parking.

☆ ☆ ☆

OFFICE SPACE FOR LEASE: N. W. Medical Bldg.; 720 sq. ft. ground floor, includes: waiting room, 2 examining rooms, consultation room, treatment-laboratory room, business office. Private entrance, air conditioned, off street parking, across from Good Samaritan Hosp.; call CA 2-9401 for information.

☆ ☆ ☆

FOR LEASE OR WILL SHARE suite in Northwest Portland medical building. Parking provided for patients and doctors. Reception room, business office, two examining rooms, consultation room, lab. Present physician using space only 2-2 1/2 days every other week. Call CA 8-5478.

SEATON PHARMACY

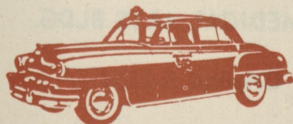
Prescriptions

BElmont 6-8517
BElmont 2-2997

60th Ave. and S. E. Belmont
Portland 15, Oregon

Intravenous Solutions

Free Delivery



SAFETY — SERVICE — COURTESY

Capitol 7-1234

"The Taxi Number You Can't Forget"

BROADWAY DELUXE CAB CO.

Modern Equipment - - - - - Radio Dispatched

Library Notes

(Continued from page 33)

Flatt, A. E.—*The care of minor hand injuries*. St. Louis, Mosby, 1959.

Garb, Solomon — *Laboratory tests in common use*. 2d ed. New York, Springer Pub. Co., 1959.

Geddes, A. K.—*Premature babies*. Philadelphia, Saunders, 1960.

Guillain, Georges—*J. M. Charcot, 1825-1893; his life—his work*. New York, Hoeber, 1959.

Helvey, T. C. — *Effects of nuclear radiation of men and materials*. New York, J. F. Rider, 1959.

Leigh, T. F. — *The mediastinum*. Springfield, Ill., Thomas, 1959.

Long, R. H.—*The physician and the law*. 2d ed. New York, Appleton-Century-Crofts, 1959.

Mazer, Charles — *Diagnosis and treatment of menstrual disorders and sterility*. 4th ed. New York, Hoeber, 1959.

Noble, Iris—*The doctor who dared*, William Osler. New York, Messner, 1959.

Osborne, R. H. — *Genetic basis of morphological variation*. Cambridge, Mass., Harvard University Press, 1959.

Paul, J. R.—*Cell and tissue culture*. Edinburgh, E. & S. Livingstone, 1959.

Symposium of Q Fever. Washington. Walter Reed Army Institute of Research, 1960.

Taylor, C. M.—*Food values in shares and weights in common servings*. 2d ed. New York, Macmillan, 1959.

Wasserman, Sigmund — *Acute cardiac pulmonary edema*. Springfield, Ill., Thomas, 1959.

Wilkinson, A. W.—*Body fluids in surgery*. 2nd. ed. Edinburgh, Livingstone, 1960.

Wilson, D. C.—*Dr. Ida*. New York, McGraw-Hill, 1959.

Zamenhof, Stephen — *The chemistry of heredity*. Springfield, Ill., Thomas, 1959.

There Is A Difference In Care

For dependable high quality service, in a home-like atmosphere, choose a home with membership in the Oregon Nursing Homes, Inc. Its members maintain the highest standards in their homes and consider the care of the patient the most important part of their service.

**OREGON
NURSING HOMES INC.**

R

Bonded Prescriptions
Free Delivery Service

AT . . .

BRALEY'S, Inc.

*The Professional
Pharmacy*

Entrance to
MEDICAL ARTS BLDG.

CApitol 3-2154



effective, palatable, economical

CREMOSUXIDINE® [SULFASUXIDINE® SUCCINYLSULFATHIAZOLE SUSPENSION WITH KAOLIN AND PECTIN] reduces fluidity of stools, reduces enteric bacteria, adsorbs toxins, and soothes the irritated intestinal mucosa.

Chocolate-mint flavored...readily accepted by patients of all ages.

Additional information on CREMOSUXIDINE is available to physicians on request.



MERCK SHARP & DOHME, DIVISION OF MERCK & CO., Inc., WEST POINT, PA.

CREMOSUXIDINE AND SULFASUXIDINE ARE TRADEMARKS OF MERCK & CO., INC.

Bulk Rate
U. S. Postage
PAID
PERMIT 645
Portland, Oregon

Aristocratic Charm in a Casual Atmosphere

Only twenty minutes south of Eugene, THE VILLAGE GREEN is the place to go for a touch of old world atmosphere—a dash of aristocratic charm—and an abundance of exquisite living.

If you haven't visited THE VILLAGE GREEN yet, don't tell anyone. Just drop in and pretend that you have been there as often as everyone else.

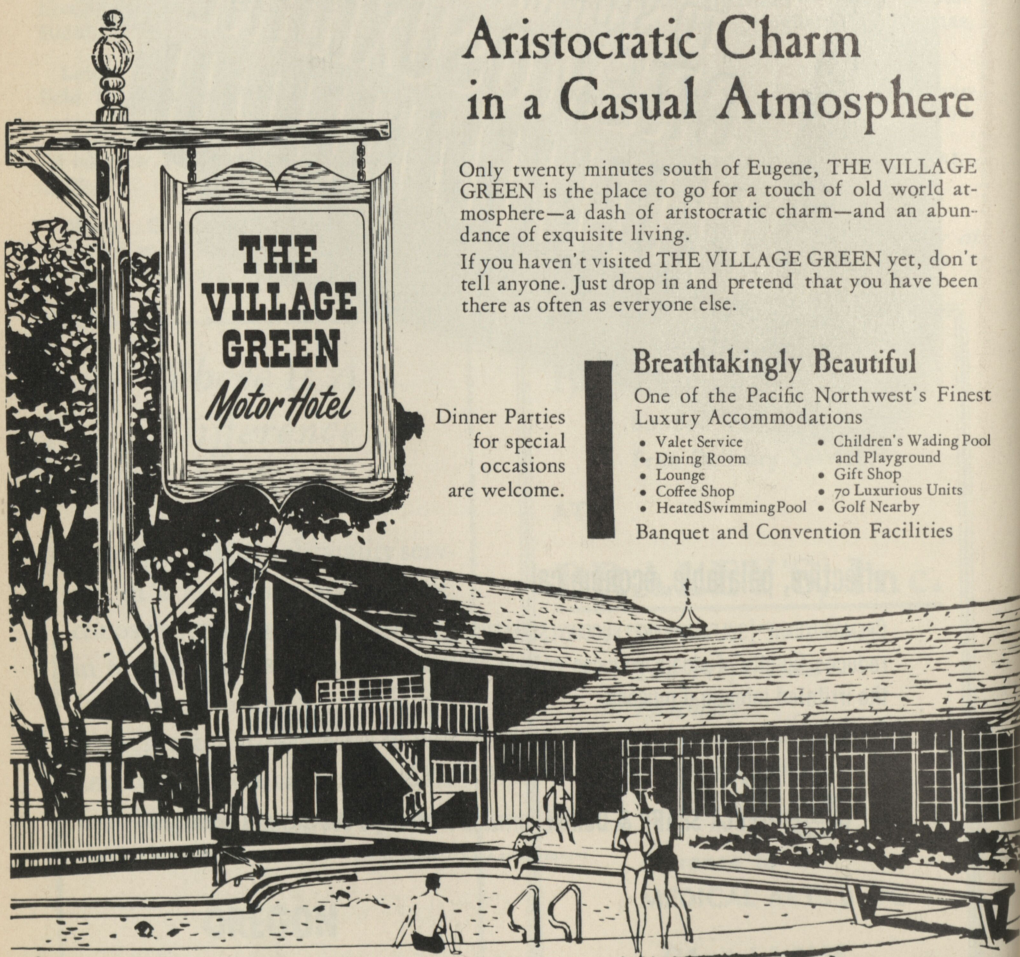
Breathtakingly Beautiful

One of the Pacific Northwest's Finest
Luxury Accommodations

- Valet Service
- Dining Room
- Lounge
- Coffee Shop
- Heated Swimming Pool
- Children's Wading Pool and Playground
- Gift Shop
- 70 Luxurious Units
- Golf Nearby

Banquet and Convention Facilities

Dinner Parties
for special
occasions
are welcome.



Food Service at



THE VILLAGE GREEN

from 6:00 a. m. until 2:30 a. m. Dining and Lounge Facilities
are Open to the Public.

For reservations, write:
THE VILLAGE GREEN
P. O. Box 277
Cottage Grove, Oregon
Whitney 2-2491

JUST 20 COLORFUL MILES
SOUTH OF EUGENE

On Highway 99 . . . turn right
at the Cottage Grove cloverleaf.

TWX Cot. Gr. 3113